



MATERIALS

Lily® Sugar'n Cream® (2.5 oz/70.9 g; 120 yds/109 m)

Cereal Bowl Dishcloth

Contrast A Country Green (01222) **1 ball or 42 yds/39 m**
Contrast B Robin's Egg (01215) **1 ball or 17 yds/15 m**
Contrast C White (00001) **1 ball or 4 yds/3 m**

Rise and Shine Dishcloth

Country Yellow (01612) **1 ball or 59 yds/54 m**

Sunny Side Up Dishcloth

Contrast A Robin's Egg (01215) **1 ball or 39 yds/35 m**
Contrast B White (00001) **1 ball or 18.5 yds/17 m**
Contrast C Country Yellow (01612) **1 ball or 4 yds/3 m**

Size U.S. 7 (4.5 mm) knitting needles **or size needed to obtain gauge.**

ABBREVIATIONS:

Approx = Approximate(ly)
Beg = Begin(ing)
Cont = Continue

RS = Right side
St(s) = Stitch(es)
WS = Wrong side

KNIT | SKILL LEVEL: INTERMEDIATE

MEASUREMENT

Approx 9" [23 cm] square.

GAUGE

20 sts and 26 rows = 4" [10 cm] in stocking st.

INSTRUCTIONS

SUNNY SIDE UP DISHCLOTH

Note: When working from Chart, wind separate balls of each color to be used. When changing colors, wind 2 colors around each other where they meet, on WS, to avoid a hole.

With A, cast on 45 sts.
 Work rows 1 to 50 of Chart, reading RS rows from **right** to left and WS rows from **left** to right. See chart on page 2.
 With A, cast off knitwise (RS).

RISE AND SHINE DISHCLOTH

Cast on 45 sts.
 Work rows 1 to 50 of chart, reading RS rows from **right** to left and WS rows from **left** to right. See chart on page 2.
 Cast off knitwise (RS).

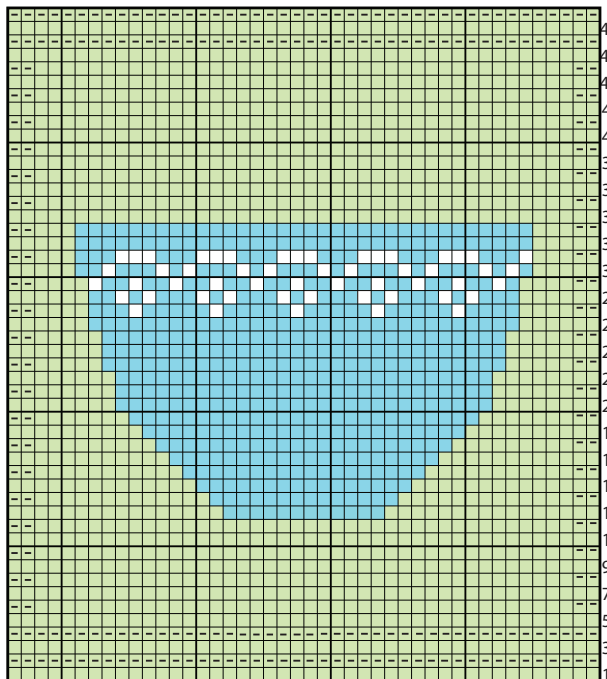
CEREAL BOWL DISHCLOTH

Note: When working from Chart, wind separate balls of each color to be used. When changing colors, wind 2 colors around each other where they meet, on WS, to avoid a hole.

With A, cast on 45 sts.
 Work rows 1 to 50 of Chart, reading RS rows from **right** to left and WS rows from **left** to right. See chart on page 2.
 With A, cast off knitwise (RS).



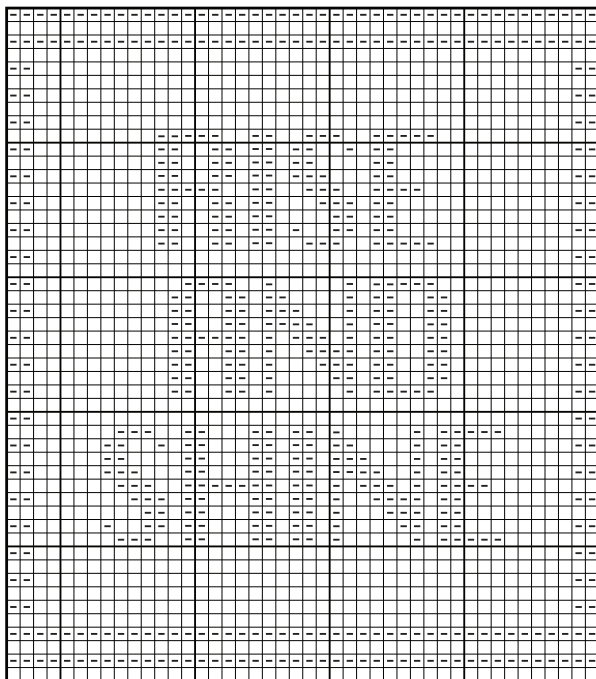
Cereal Bowl Chart



Start Here

- Key
- = With A, knit on RS rows. Purl on WS rows.
 - = With A, purl on RS rows. Knit on WS rows.
 - = With B, knit on RS rows. Purl on WS rows.
 - = With C, knit on RS rows. Purl on WS rows.

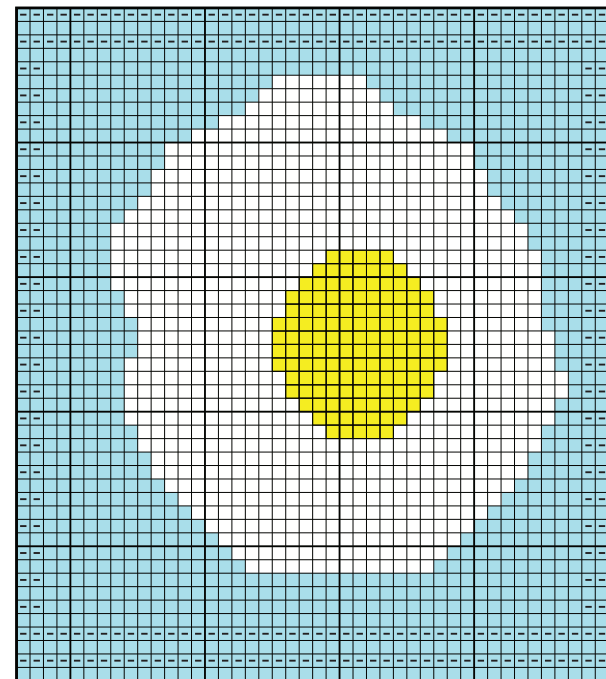
Rise and Shine Chart



Start Here

- Key
- = Knit on RS rows. Purl on WS rows.
 - = Purl on RS rows. Knit on WS rows.

Sunny Side Up Chart



Start Here

- Key
- = With A, knit on RS rows. Purl on WS rows.
 - = With A, purl on RS rows. Knit on WS rows.
 - = With B, knit on RS rows. Purl on WS rows.
 - = With C, knit on RS rows. Purl on WS rows.