



Katherine Poole-Fournier
Designer



KNIT | SKILL LEVEL: INTERMEDIATE

ABBREVIATIONS

Alt = Alternate(ing)

Approx = Approximately

Beg = Beginning

C2B = Slip next stitch onto cable needle and leave at back of work. K1, then K1 from cable needle

C2F = Slip next stitch onto cable needle and leave at front of work. K1, then K1 from cable needle

C4B = Slip next 2 stitches onto cable needle and leave at back of work. K2, then K2 from cable needle.

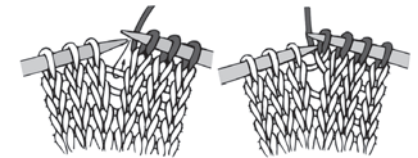
C4F = Slip next 2 stitches onto cable needle and leave at front of work. K2, then K2 from cable needle.

Inc = Increase

K = Knit

K2tog = Knit next 2 stitches together

M1 = Make 1 stitch by picking up horizontal loop lying before next stitch and knitting into back of loop



Pat = Pattern

P = Purl

P2tog = Purl next 2 stitches together

PM = Place marker

Rem = Remain(ing)

Rep = Repeat

Rnd(s) = Round(s)

Ssk = Slip next 2 stitches knitwise one at a time. Pass them back onto left-hand needle, then knit through back loops together

St(s) = Stitch(es)

MATERIALS

Patons® Classic Wool Worsted™ (3.5 oz/100 g; 194 yds/177 m)

Brown Mustard (77757)

2 balls

Sizes U.S. 6 (4 mm) and U.S. 7 (4.5 mm) circular knitting needles 16" [40.5 cm] long **or sizes needed to obtain gauge.** Set of 4 size U.S. 7 (4.5 mm) double-pointed knitting needles. Stitch marker. Yarn needle. Cable needle.

SIZE

One size to fit Adult.

GAUGE

20 sts and 26 rows = 4" [10 cm] in stocking st with larger needles.

INSTRUCTIONS

With smaller circular needle, cast on 108 sts. Join to work in the rnd, PM on first st.

1st rnd: *K2. P2. Rep from * around.

Rep 1st rnd until work from beg measures approx 6" [15 cm].

Inc rnd: With larger circular needle, *K9. M1. Rep from * around. 120 sts.

Beg working in Cable Pat as follows: (see Chart I on page 3)

1st rnd: *P3. C4B. P3. K6. C4B. C4F. K6. Rep from * around.

2nd and alt rnds: *P3. K4. P3. K20. Rep from * around.

3rd rnd: *P3. K4. P3. K4. C4B. K4. C4F. K4. Rep from * around.

5th rnd: *P3. C4B. P3. K2. C4B. K8. C4F. K2. Rep from * around.

7th rnd: *P3. K4. P3. C4B. K12. C4F. Rep from * around.

8th rnd: As 2nd rnd.

Rep 1st to 8th rnds until work from beg measures approx 10" [25.5 cm], ending on an 8th rnd.

Shape Crown (see Chart II on page 3)

Proceed with Crown Shaping as follows, switching to double-pointed needles when necessary:

1st rnd: *P3. C4B. P3. ssk. K4. C4B. C4F. K4. K2tog. Rep from * around. 112 sts.

2nd rnd: *P3. K4. P3. K18. Rep from * around.

3rd rnd: *P3. K4. P3. ssk. K1. C4B. K4. C4F. K1. K2tog. Rep from * around. 104 sts.

4th rnd: *P3. K4. P3. K16. Rep from * around.

5th rnd: *P1. P2tog. C4B. P2tog. P1. C4B. K8. C4F. Rep from * around. 96 sts.

6th rnd: *P2. K4. P2. ssk. K12. K2tog. Rep from * around. 88 sts.

7th rnd: *P2. K4. P2. K3. C4B. C4F. K3. Rep from * around.

8th rnd: *P2. K4. P2. ssk. K10. K2tog. Rep from * around. 80 sts.

9th rnd: *P2. C4B. P2. C4B. K4. C4F. Rep from * around.

10th rnd: *P2. ssk. K2tog. P2. K12. Rep from * around. 72 sts.

11th rnd: *P2. K2. P2. ssk. C4B. C4F. K2tog. Rep from * around. 64 sts.

12th rnd: *P2. K2. P2. K10. Rep from * around.

13th rnd: *P2. C2B. P2. ssk. C2B. K2. C2F. K2tog. Rep from * around. 56 sts.

14th rnd: *P2tog. K2. P2tog. K8. Rep from * around. 48 sts.

15th rnd: *P1. K2. P1. ssk. K4. K2tog. Rep from * around. 40 sts.

16th rnd: *(P2tog) twice. K6. Rep from * around. 32 sts.

17th rnd: *P2. ssk. K2. K2tog. Rep from * around. 24 sts.

Break yarn, leaving a long end. Draw end through rem 24 sts tightly and fasten securely.

Pompom: Wind yarn around 4 fingers approx 70 times. Remove from fingers and tie tightly in center. Cut through each side of loops. Trim to a smooth round shape. Sew pompom to top of Hat.

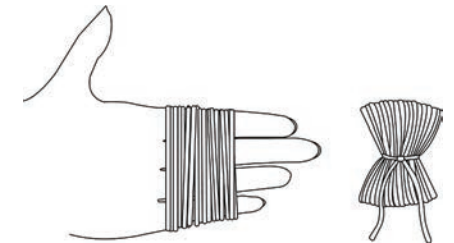
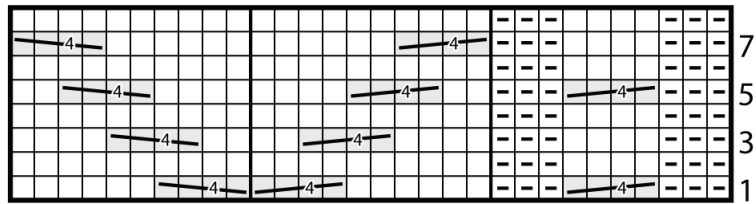
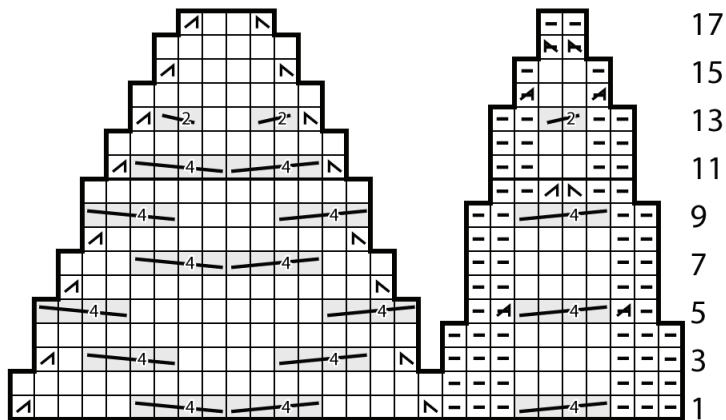


Chart I



Start Here

Chart II



Start Here

Key

- = Knit
- ◻ = Purl
- = C2B
- = C2F
- = C4B
- = C4F
- = ssk
- = K2tog
- = P2tog

