



Technique:	Sewing, Raw-edge Appliqué
Designed By:	Linda Turner Griepentrog
Skill Level:	Experienced Beginner
Crafting Time:	An evening
Finished size:	15½" (39.37cm) (top width) x 12½" (31.75cm) tall

## Featuring Coats Dual Duty XP®

A little bit tailored, a little bit funky—that's the personality of this fun tote with frayed and fuzzy square embellishments.

## Supplies

- **Coats Dual Duty XP® All-purpose Thread**
- ½ yd (45.72cm) black canvas
- ½ yd (45.72cm) cotton lining
- ¼ yd (22.86cm) woven plaid or check for accents\*
- 8" (20.32cm) square cotton print for inside pocket
- 1½ yds (1.37m) medium-weight fusible interfacing, 20" (50.80cm) wide
- 3 yds (2.74m) cotton webbing, 1" (2.54cm) wide
- Wire brush (optional)
- Adhesive lint remover (optional)

**\*Note:** Choose a woven check or plaid for full-color fuzz. If you choose a printed fabric, the frayed portion may appear white instead of fully colored.

## Cutting

**Note:** Bag body template on page 3 needs to be printed at 200%

**From black canvas and lining fabric, cut:**

(2) Bag body; mark the handle placement lines on the canvas pieces right side

**From fusible interfacing, cut:**

(2) Bag body

**From inside pocket fabric:**

(1) 8" (20.32cm) square cotton print

**From woven plaid/check, cut:**

(30) 2½" (6.35cm) squares on point, nesting for the best use of fabric

**Note:** Seam allowances are ¼" (.64cm) unless otherwise noted.

## Assemble the Lining

1. Following the manufacturer's instructions, fuse the interfacing to each lining bag body wrong side.
2. Press under ½" (1.27cm) on three inside pocket edges. On the top edge, press under a double ½" (1.27cm) hem and topstitch.
3. Center the pocket 4" (10.16cm) from the upper edge on one lining bag body piece. Edgestitch the sides and lower edge, and reinforce stitching at upper corners.
4. With right sides together, pin the lining sections together. Sew around the sides and lower edge, leaving a 6" opening in the center bottom for turning. Trim the seam allowances. Press seams open. Set aside.

## Assemble the Bag Front

1. With the inside of the webbing along the marked

handle line, pin in place. Extend a 23" (58.42cm) handle loop and then pin the opposite side of the webbing along the handle line. Be careful not to twist the handle.

2. Edgestitch the webbing in place along both sides, stopping 1" (2.54cm) from the upper edge and backstitching for reinforcement.
3. Repeat Step 3 for the back bag body handle.
4. Stack six plaid squares together matching the raw edges. Make five stacks.
5. Following the photo, position the plaid stacks on point on the bag front between the handles, keeping the upper and lower points at least 1" (2.54cm) away from the cut edges. Pin securely to prevent shifting.
6. Stitch around each set of squares ¼" (.64cm) from the cut edges, backstitching for reinforcement.
7. Using a wire brush (or a hairbrush), vigorously brush the extending cut edges of the squares to fray all the layers. Use an adhesive lint remover to neaten.

## Assemble the Bag

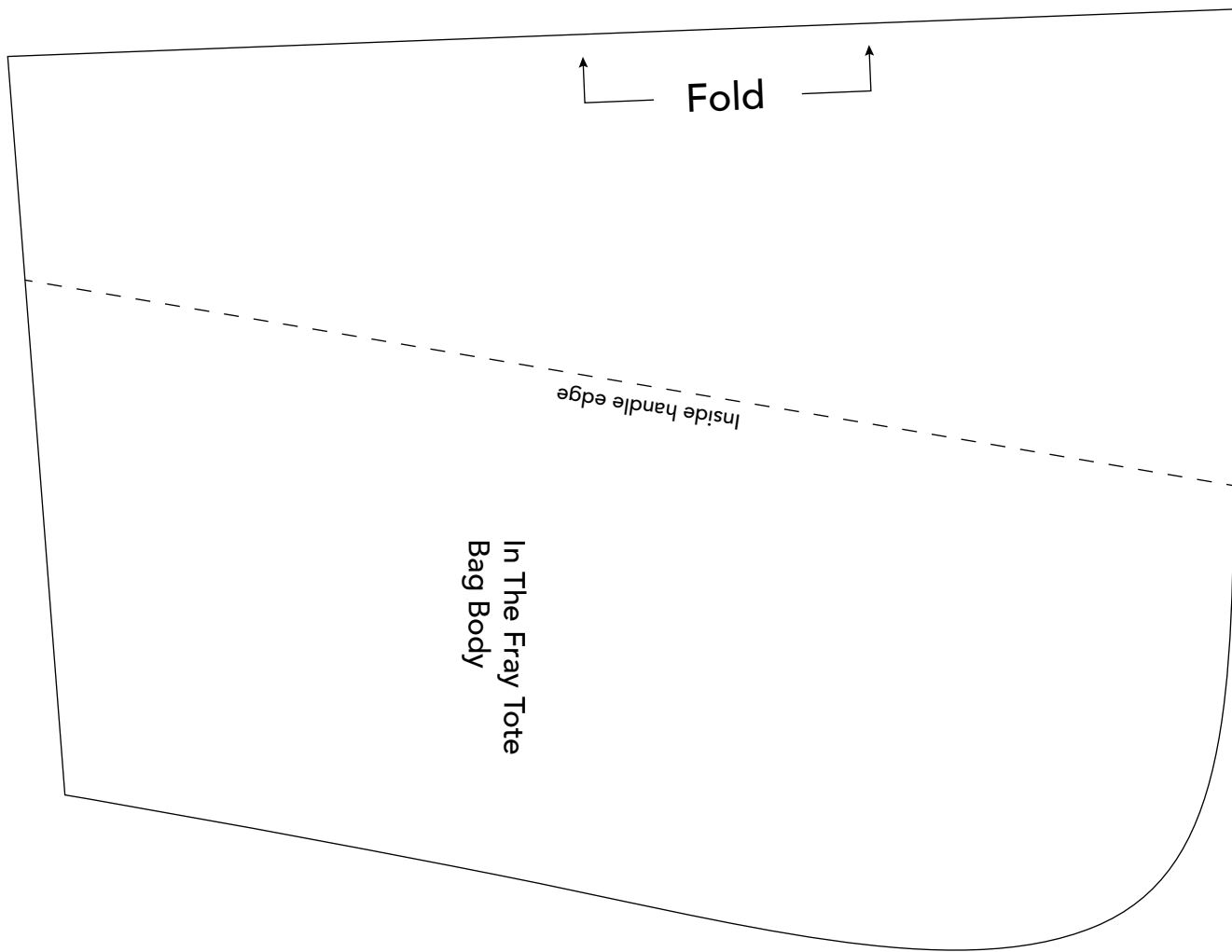
1. Place the bag back and bag front right sides together with edges matching; pin.
2. Sew around the bag sides and lower edge.
3. Turn the bag right side out and press the side seams open.
4. With right sides together, slip the lining over the bag, matching the upper edge, side seams and centers. Tuck the handles between the layers and out of the seamline. Note the inside pocket can be placed either on the bag front or back, depending on your preference. Sew around the top of the bag.
5. Turn the bag right side out through the lining opening. Hand- or machine stitch the opening closed.

## Finishing

1. Tuck the lining into the bag and press the upper

edge.

2. Topstitch the upper bag edge, securing the handles in the stitching.
3. Press the bag to shape.



This square should  
measure 1" x 1"  
(2.54cm x 2.54cm)  
when printed.

\*\*\* Measure templates before cutting to confirm printing at 200%\*\*\*