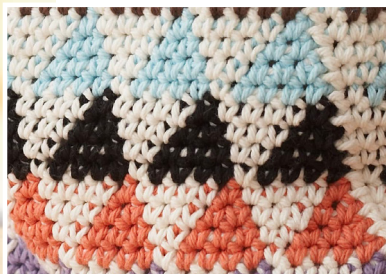




Version A



MATERIALS		
Lily® Sugar'n Cream® (70.9 g/2.5 oz; 109 m/120 yds)		
Sizes	Version A	Version B
Main Color (MC) Soft Ecru (01004)	2 balls or 118 m/128 yds	2 balls or 58 m/64 yds
Contrast A Black (00002)	1 ball or 43 m/47 yds	1 ball or 23 m/25 yds
Contrast B Robin's Egg (01215)	1 ball or 31 m/34 yds	1 ball or 17 m/19 yds
Contrast C Warm Brown (01130)	1 ball or 26 m/29 yds	1 ball or 13 m/15 yds
Contrast D Hot Purple (01317)	1 ball or 35 m/39 yds	1 ball or 18 m/20 yds
Contrast E Tangerine (01699)	1 ball or 26 m/29 yds	1 ball or 14 m/15 yds
Size U.S. H/8 (5 mm) crochet hook or size needed to obtain gauge.		
Zipper 10" [25 cm] long for both Versions.		

CROCHET | SKILL LEVEL: INTERMEDIATE

MEASUREMENTS

Version A: Approx 10" [25.5 cm] wide x 11" [28 cm] long.

Version B: Approx 10" [25.5 cm] wide x 5½" [14 cm] long.

GAUGE

13 sc and 14 rows = 4" [10 cm].

INSTRUCTIONS

Notes

- When joining new color, work to last 2 loops on hook of last st. Draw new color through 2 loops, then proceed in new color. Carry color not in use across top of previous rnd and work sts around it to prevent stranding.
- Join with sl st at end of each rnd.

The instructions are written for smaller size. If changes are needed for larger size, the instructions will be written thus ().

With A, ch 33.

1st rnd: 1 sc in 2nd ch from hook. 1 sc in each ch to last ch. 3 sc in last ch. **Do not** turn. Working in rem loops of foundation ch, 1 sc in each ch to end of chain. Join with sl st to first sc. 65 sc.

2nd rnd: With A, ch 1. *1 sc in each of next 4 sc. With MC, 1 sc in next sc. Rep from * around. Join with sl st to first sc. 1st row of Chart is complete.

Chart is shown on page 2.

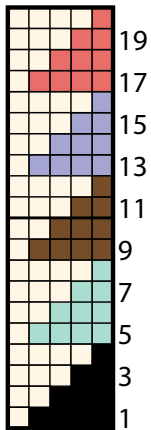
Cont working Chart in sc, reading rows from right to left, until Chart has been worked 1 (2) time(s), ending on 20th row of Chart. Fasten off.

FINISHING

Sew zipper into bag at top edge.



Chart



Start Here

Key

- = Main Color (MC)
- = Contrast A
- = Contrast B
- = Contrast C
- = Contrast D
- = Contrast E



Version B

ABBREVIATIONS:

Approx = Approximately
Beg = Beginning
Ch = Chain(s)
Cont = Continue

Rem = Remain(ing)
Rep = Repeat
Rnd(s) = Round(s)
Sc = Single crochet

Sl st = Slip stitch
St(s) = Stitch(es)
Tog = Together
WS = Wrong side