



CROCHET
SKILL LEVEL
INTERMEDIATE

Designed by Diane McKee

What you will need:

RED HEART® Super Saver®:
4 (5, 5, 5, 6) skeins 312 Black A,
and 1 skein each of 316 Soft White
B, 3620 Glowworm C, and 356
Amethyst D

Susan Bates® Crochet hook:
6mm [US J-10]

Yarn needle

GAUGE: 11 sts = 4" (10 cm);
14 rows = 4" (10 cm) in single
crochet (sc). **CHECK YOUR GAUGE.**
Use any size hook to obtain the
gauge.



RED HEART® Super Saver®, Art. E300
available in solid color
7 oz (198 g), 364 yd (333 m);
multicolor, heather and print 5 oz
(141 g), 244 yd (223 m), flecks 5 oz
(141 g), 260 yds (238 m) skeins



Monster Face Sweater

*Instead of buying a tacky costume, crochet
this ghoul-faced sweater and be ready for
Halloween party night!*

Directions are for size **Small**. Changes for
sizes **Medium, Large, X-Large, and XX-Large**
are in parentheses.

To Fit Chest: 36 (40, 44, 46, 52)" (91.5 (101.5,
112, 117, 132) cm)

Finished Chest: 42 (46, 50, 54, 58)" (106.5
(117, 127, 137, 147.5) cm)

Finished Length: 26 (26½, 27, 27½, 27½)"
(66 (67.5, 68.5, 70, 70) cm)

Special Stitches

Bpdc (back post double crochet) = Yarn over,
insert hook from back side of work to front
and to back again around the post of indicated
stitch; yarn over and pull up a loop (3 loops on
hook), [yarn over and draw through 2 loops on
hook] twice.

Fpdc (Front post double crochet) = Yarn over,
insert hook from front side of work to back
and to front again around post of indicated
stitch; yarn over and pull up a loop (3 loops on
hook), [yarn over and draw through 2 loops on
hook] twice.

sc2tog (single crochet 2 stitches together) =
[Insert hook in next stitch, yarn over and pull
up a loop] twice, yarn over and draw through
all 3 loops on hook.

Notes

- Sweater is made from four pieces: Back,
front, and two sleeves.
- Monster eyes and teeth are worked on
front by changing colors following Monster
Chart. Each square of chart represents
one single crochet stitch worked in the
indicated color. Read right side rows of
chart from right to left and wrong side rows
from left to right.
- To change color, work last stitch of old
color to last yarn over. Yarn over with new
color and draw through all loops on hook to
complete stitch. Proceed with new color.

- Use separate small balls of yarn for each
section of color. Do not carry colors not in
use across wrong side of work nor under
stitches.
- Mouth and irises are worked separately
and sewn to face.

BACK

With **A**, ch 59 (65, 69, 75, 81).

Foundation Row (right side): Sc in 2nd ch
from hook and in each ch across, turn—58
(64, 68, 74, 80) sc.

Row 1: Ch 1, sc in each st across, turn.
Repeat last row until piece measures about
16½" (42 cm) from beginning; end with a
wrong side row.

Shape Armholes

Row 1 (right side): Slip st in first 8 (10, 11, 13,
14) sts, ch 1, sc in each st across to last 8 (10,
11, 13, 14) sts; leave remaining sts unworked,
turn—42 (44, 46, 48, 52) sc.

Row 2: Ch 1, sc in each st across, turn.
Repeat last row until armholes measure about
8½ (9, 9½, 10, 10)" (21.5 (23, 24, 25.5, 25.5)
cm); end with a wrong side row.

Shape Neck and First Shoulder

Row 1 (right side): Ch 1, sc in next 11 (12, 13,
14, 16) sts for first shoulder; leave remaining
sts unworked for neck and second shoulder,
turn—11 (12, 13, 14, 16) sts.

Row 2: Ch 1, sc2tog, sc in each st across,
turn—10 (11, 12, 13, 15) sts.

Row 3: Ch 1, sc in each st across, turn.
Repeat last row until armhole measures
about 9½ (10, 10½, 11, 11)" (24 (25.5, 26.5,
28, 28) cm).

Fasten off.

Continued...

SHOP KIT



Shape Neck and Second Shoulder

Row 1 (right side): With right side facing, skip next 20 unworked sts following first shoulder, join yarn with sc in next st, sc in each st across for second shoulder, turn—11 (12, 13, 14, 16) sts.

Row 2: Ch 1, sc in each st to last 2 sts, sc2tog, turn—10 (11, 12, 13, 15) sts.

Row 3: Ch 1, sc in each st across, turn. Repeat last row until armhole measures about 9½ (10, 10½, 11, 11) (24 (25.5, 26.5, 28, 28) cm). Fasten off.

FRONT

Work same as back until piece measures about 11¼ (12, 12½, 13, 13) (28.5 (30.5, 32, 33, 33) cm) from beginning; end with a wrong side row—58 (64, 68, 74, 80) sc.

Begin Monster Chart

Row 1 (right side): Ch 1, sc in first 14 (17, 19, 22, 25) sts, work Row 1 of Monster Chart over next 30 sts, sc in last 14 (17, 19, 22, 25) sts, turn.

Rows 2–18 (16, 14, 12, 12): Ch 1, sc in first 14 (17, 19, 22, 25) sts, work next row of Monster Chart over next 30 sts, sc in last 14 (17, 19, 22, 25) sts, turn.

Shape Armholes

Row 1 (right side): Slip st in first 8 (10, 11, 13, 14) sts, ch 1, sc in next 6 (7, 8, 9, 11) sts, work next row of Monster Chart over next 30 sts, sc in next 6 (7, 8, 9, 11) sts; leave remaining sts unworked, turn—42 (44, 46, 48, 52) sc.

Row 2: Ch 1, sc in first 6 (7, 8, 9, 11) sts, work next row of Monster Chart over next 30 sts, sc in last 6 (7, 8, 9, 11) sts, turn.

Repeat last row until all rows of Monster Chart have been completed.

Continue with **A** only.

Next Row: Ch 1, sc in each st across, turn. Repeat last row until armholes measure about 6 (6½, 7, 7½, 7½) (15 (16.5, 18, 19, 19) cm); end with a wrong side row.

Shape Neck and First Shoulder

Row 1 (right side): Ch 1, sc in next 13 (14, 15, 16, 18) sts for first shoulder; leave remaining sts unworked for neck and second shoulder, turn—13 (14, 15, 16, 18) sts.

Row 2: Ch 1, sc2tog, sc in each st across, turn—12 (13, 14, 15, 17) sts.

Row 3: Ch 1, sc in each st to last 2 sts, sc2tog, turn—11 (12, 13, 14, 16) sts.

Row 4: Repeat Row 2—10 (11, 12, 13, 15) sts.

Row 5: Ch 1, sc in each st across, turn. Repeat last row until armhole measures about 9½ (10, 10½, 11, 11) (24 (25.5, 26.5, 28, 28) cm). Fasten off.

Shape Neck and Second Shoulder

Row 1 (right side): With right side facing, skip next 16 unworked sts following first shoulder, join yarn with sc in next st, sc in each st across for second shoulder, turn—13 (14, 15, 16, 18) sts.

Row 2: Ch 1, sc in each st to last 2 sts, sc2tog, turn—12 (13, 14, 15, 17) sts.

Row 3: Ch 1, sc2tog, sc in each st across, turn—11 (12, 13, 14, 16) sts.

Row 4: Repeat Row 2—10 (11, 12, 13, 15) sts.

Row 5: Ch 1, sc in each st across, turn. Repeat last row until armhole measures about 9½ (10, 10½, 11, 11) (24 (25.5, 26.5, 28, 28) cm). Fasten off.

SLEEVES (make 2)

Ch 29 (29, 30, 30, 30).

Foundation Row (right side): Sc in 2nd ch from hook and in each ch across, turn—28 (28, 29, 29, 29) sc.

Row 1: Ch 1, sc in each st across, turn.

Row 2 (increase row): Ch 1, 2 sc in first st, sc in each st across to last st, 2 sc in last st, turn—30 (30, 31, 31, 31) sc.

Next 4 (3, 3, 3, 3) Rows: Ch 1, sc in each st across, turn.

Next Row (increase row): Repeat Row 2—32 (32, 33, 33, 33) sc.

Repeat last 5 (4, 4, 4, 4) rows 6 (4, 11, 10, 10) more times—44 (40, 55, 53, 53) sc.

Next 5 (4, 4, 2, 2) Rows: Ch 1, sc in each st across, turn.

Next Row (increase row): Repeat Row 2—46 (42, 57, 55, 55) sc.

Repeat last 6 (5, 5, 3, 3) rows 3 (7, 1, 3, 3) more times—52 (56, 59, 61, 61) sc.

Next Row: Ch 1, sc in each st across, turn. Repeat last row until piece measures about 22½ (23½, 23½, 23½, 23½) (57 (59.5, 59.5, 59.5, 59.5) cm) from beginning. Fasten off.

MOUTH

With **D**, ch 29.

Row 1: Working in back bumps, sc in 2nd ch from hook and in each ch across—28 sc.

Fasten off, leaving a long tail for sewing mouth to face.

IRISES (make 2)

With **D**, ch 4; join with slip st in first ch to form a ring.

Round 1: Ch 3, work 6 dc in ring; join with slip st in top of beginning ch.

Fasten off, leaving a long tail for sewing iris to eye.

FINISHING

Using photograph as a guide, sew one iris to each eye. With **B**, embroider a French Knot in the center of each iris for pupils. Position mouth above teeth and sew in place. Sew shoulder seams. Sew side and sleeve seams.

Neckband

Round 1 (right side): With right side facing, join **A** with slip st in neck edge at shoulder seam to begin working across back neck edge, ch 3 (counts as first dc), work 71 more dc evenly spaced around neck edge; join with slip st in top of beginning ch—72 dc.

Round 2: Ch 2 (does not count as a st), FPdc around beginning ch of previous round, BPdc around next st, *FPdc around next st, BPdc around next st; repeat from * around; join with slip st in top of first post st.

Round 3: Ch 2, FPdc around same st as joining, BPdc around next st, *FPdc around next st, BPdc around next st; repeat from * around; join with slip st in top of first post st. Repeat Round 3 until neckband measures about 1½ (4) cm.

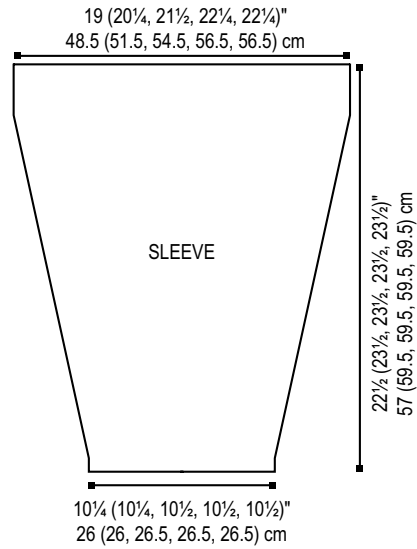
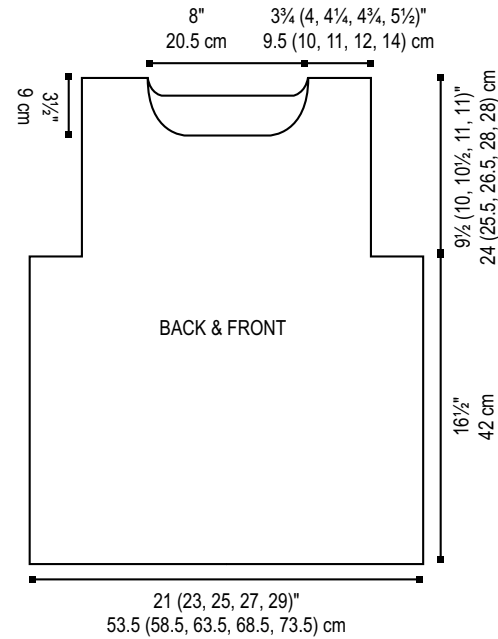
Last Round: Slip st in each st around. Fasten off.

Weave in any remaining ends.

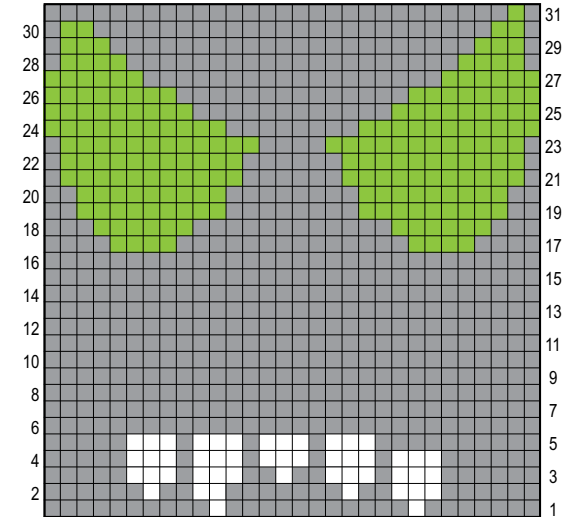
ABBREVIATIONS

A, B, C and **D** = Color A, B, C, and Color D; **ch** = chain; **dc** = double crochet; **sc** = single crochet; **st(s)** = stitch (es); * = repeat whatever follows the * as indicated.

See Monster Chart on next page



Monster Chart



Key

- A - 312 Black
- B - 316 Soft White
- C - 3620 Glowworm