

CARON® STRIPES AND CHECKS CROCHET SCARF



CROCHET | SKILL LEVEL: **EASY**

ABBREVIATIONS

Approx = Approximately
Beg = Begin(ning)
Ch = Chain(s)
Cont = Continue
Dc = Double crochet

Rem = Remain(ing)(s)
Rep = Repeat
RS = Right side
St(s) = Stitch(es)
WS = Wrong side

MEASUREMENTS

Approx 10" [25.5 cm] wide x 100" [254 cm] long, excluding tassels.

GAUGE

13 dc and 7 rows = 4" [10 cm].

INSTRUCTIONS

Note: Ch 3 at beg of rows counts as dc.

Scarf is worked in Chart Pat in 6 Sections. Change colors in each Section as shown below:

Chart Pat

Section 1: A as Color 1; B as Color 2; C as Color 3; D as Color 4; E as Color 5; F as Color 6.

Section 2: B as Color 1; E as Color 2; D as Color 3; A as Color 4; C as Color 5; F as Color 6.

Section 3: E as Color 1; C as Color 2; A as Color 3; B as Color 4; D as Color 5; F as Color 6.

Section 4: C as Color 1; D as Color 2; B as Color 3; E as Color 4; A as Color 5; F as Color 6.

Section 5: D as Color 1; A as Color 2; E as Color 3; C as Color 4; B as Color 5; F as Color 6.

Section 6: Work only 1st to 12th rows of Chart - D as Color 1; C as Color 2; B as Color 3; A as Color 4.

With F, ch 44.

1st row: (RS) 1 dc in 4th ch from hook (counts as 2 dc). 1 dc in each ch to end of ch. Turn. 42 dc.

2nd row: Ch 3. 1 dc in each dc to end of row. Turn.

Rep 2nd row twice more. Break F. Join A.

MATERIALS

Caron® Simply Soft (6 oz /170.1 g; 315 yds/288 m)

Contrast A Victorian Rose (39721) **1 ball**

Contrast B Gold (39782) **1 ball**

Contrast C Dark Sage (39707) **1 ball**

Contrast D Dark Country Blue (39711) **1 ball**

Contrast E Fuchsia (39764) **1 ball**

Caron® Simply Soft Speckle (5 oz/141 g; 235 yds/215 m)

Contrast F Seashell (61009) **2 balls**

Size U.S. H/8 (5 mm) crochet hook **or size needed to obtain gauge.**

CARON® STRIPES AND CHECKS CROCHET SCARF

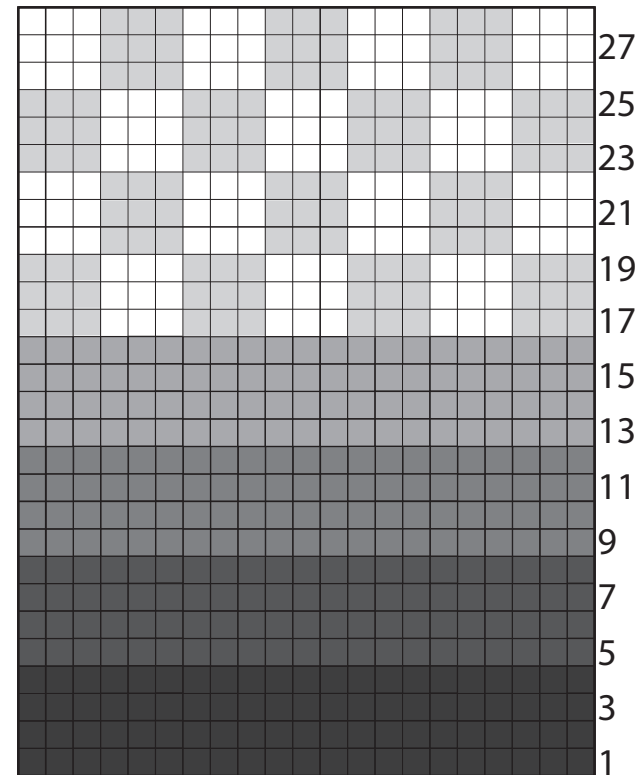
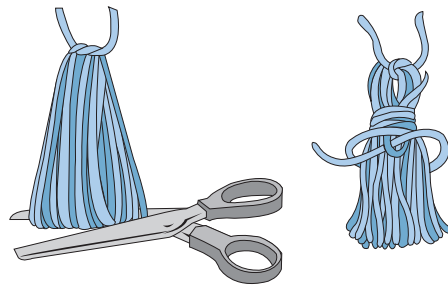
Proceed in Chart Pat (Section 1), noting that each square of chart is equal to 2 dc, *reading RS rows from right to left and WS rows from left to right*. Carry color not in use loosely across top of work and work sts around it. Change colors by drawing contrast color through last 2 loops on hook and proceed with new color.

Cont working Chart Pat (all rows are worked in dc) until all 6 Sections of Chart Pat are complete. Break A. Join F.

Next 4 rows: With F, ch 3. 1 dc in each dc to end of row. Turn. Fasten off at end of 4th row.

Tassels (make 10 with F)

Cut a piece of cardboard 6" [15 cm] wide. Wind yarn around cardboard 60 times. Break yarn leaving a long end and thread end through needle. Slip needle through all loops and tie tightly. Remove cardboard and wind yarn tightly around loops 1" [2.5 cm] below fold. Fasten securely. Cut through rem loops and trim ends evenly. Sew 5 Tassels evenly spaced to each end of Scarf.



- Color 1
- Color 2
- Color 3
- Color 4
- Color 5
- Color 6

Start here