



Fancy Shells Wrap

designed by Shannon Mullett-Bowlsby

FREE

1 INTERMEDIATE

ONE POUND™

DESCRIPTION SIZING

A breezy, open-lace wrap in bright colors.

Abbreviations

Ch(s) = Chain(s)

Dc = double crochet

hdc = half double crochet

sc = single crochet

Sl st = Slip stitch

Details & Instructions

MEASUREMENTS

Finished

Measurements

**Approx. 32"/81.5cm
wide x 72"/183cm
long**

MATERIALS

-One size U.S. H-8 (5mm) crochet hook, or size to obtain gauge

-Yarn Needle

Pink Wrap

One Pound (454 g/16. oz; 742 m/812 yds)



Main Color (MC) Rose (0517)

1

Green Wrap

One Pound (454 g/16. oz; 742 m/812 yds)



Main Color (MC) Leaf Green (0566)

1

GAUGE

Gauge is not critical for this project.

INSTRUCTIONS

SPECIAL STITCH

2-dc Cl: Two double crochet cluster— Yarn over, insert hook in indicated stitch or space and draw up a loop, yarn over and draw through 2 loops on hook; yarn over, insert hook in *same* st or sp and draw up a loop, yarn over and draw through 2 loops on hook; yarn over and draw through all 3 loops on hook.

3-dc Cl: Three double crochet cluster— Yarn over, insert hook in indicated stitch or space and draw up a loop, yarn over and draw through 2 loops on hook; [yarn over, insert hook in *same* st or sp and draw up a loop, yarn over and draw through 2 loops on hook] 2 times; yarn over and draw through all 4 loops on hook.

Fhdc: Foundation half double crochet (This technique creates a foundation chain and a row of half double crochet stitches in one) –

Step 1: Place a slip knot on hook, ch 3, yarn over, insert hook in 3rd ch from hook and draw up a loop; yarn over and draw through one loop on hook (the "chain"); yarn over and draw through 3 loops on hook (the "half double crochet").

Step 2: Yarn over, insert hook into the "chain" of the previous stitch and draw up a loop, yarn over and draw through one loop on hook (the "chain"), yarn over and draw through 3 loops on hook (the "half double crochet").

Repeat step 2 for the length of foundation.

V-st: V-stitch—(Dc, ch 1, dc) in indicated stitch.

Cl-V: Cluster V-stitch—(2-dc Cl, ch 2, 2-dc Cl) in indicated stitch.

WRAP

Fhdc 211. **Note:** If you prefer to begin wrap with a traditional foundation chain, work as follows: Ch 212. Row 1: Hdc in 2nd ch from hook and in each remaining ch across, turn—211 hdc. Then proceed to Row 1 of instructions.

Row 1: Ch 4 (counts as dc, ch 1 here and throughout), (3-dc Cl, ch 2, 3-dc Cl) in first st, ch 1, sk next 3 sts, sc in next st, [ch 2, sk next st, sc in next st] 3 times, *ch 1, sk next 3 sts, (3-dc Cl, [ch 2, 3-dc Cl] 3 times) in next st, ch 1, sk next 3 sts, sc in next st, [ch 2, sk next st, sc in next st] 3 times; repeat from * across to last 4 sts, ch 1, sk next 3 sts, (3-dc Cl, ch 2, 3-dc Cl, ch 1, dc) in last st, turn—14 cluster groups and 1 half cluster group at each end.

Row 2: Ch 4, dc in next ch-sp, ch 1, (dc, [ch 1, dc] 2 times) in next ch-sp, ch 1, sk next 2 ch-sps, sc in next ch-sp, ch 2, sk next 2 ch-sps, *(dc, [ch 1, dc] 2 times) in next ch-sp, ch 1] 2 times, (dc, [ch 1, dc] 2 times) in next ch-sp, ch 2, sk next 2 ch-sps, sc in next ch-sp, ch 2, sk next 2 ch-sps; repeat from * across to 1 ch-sp before turning ch, (dc, [ch 1, dc] 2 times) in next ch-sp, ch 1, dc in turning ch-sp, ch 1, dc in 3rd ch of turning ch, turn.

Row 3: Ch 1, sc in first st, [sc in next ch-sp, ch 2] 2 times, sc in next ch-sp, ch 2, sk next 2 ch-sps, V-st in next sc, ch 2, sk next 2 ch-sps, *[sc in next ch-sp, ch 2] 5 times, sc in next ch-sp, ch 2, sk next 2 ch-sps, V-st in next sc, ch 2, sk next 2 ch-sps; repeat from * across to 2 ch-sps before turning ch, sc in next ch-sp, ch 2, sc in next ch-sp, ch 2, sc in turning ch-sp, sc in 3rd ch of turning ch, turn.

Row 4: Ch 1, sc in first st, [ch 2, sc in next ch-sp] 2 times, ch 3, sk next ch-sp, Cl-V in next ch-sp (ch-sp of V-st), ch 3, sk next ch-sp, *[sc in next ch-sp, ch 2] 4 times, sc in next ch-sp, ch 3, sk next ch-sp, Cl-V in next ch-sp, ch 3, sk next ch-sp; repeat from * across to last 2 ch-sps, [sc in next ch-sp, ch 2] 2 times, sk next sc, sc in last sc, turn.

Row 5: Ch 1, sc in first st, sc in next ch-sp, ch 2, *sc in next ch-sp, ch 1, sk next ch-sp, (3-dc Cl, [ch 2, 3-dc Cl] 3 times) in next ch-sp, ch 1, sk next ch-sp, *[sc in next ch-sp, ch 2] 3 times, sc in next ch-sp, ch 1, sk next ch-sp, (3-dc Cl, [ch 2, 3-dc Cl] 3 times) in next ch-sp, ch 1, sk next ch-sp; repeat from * across to last 2 ch-sps, sc in next ch-sp, ch 2, sc in next ch-sp, sc in last sc, turn.

Row 6: Ch 1, sc in first st, ch 2, sk next 2 ch-sps, [(dc, [ch 1, dc] 2 times) in next ch-sp, ch 1] 2 times, (dc, [ch 1, dc] 2 times) in next ch-sp, ch 2, sk next 2 ch-sps, *sc in next ch-sp, ch 2, sk next 2 ch-sps, [(dc, [ch 1, dc] 2 times) in next ch-sp, ch 1] 2 times, (dc, [ch 1, dc] 2 times) in next ch-sp, ch 2, sk next 2 ch-sps; repeat from * across to last 2 sc, sk next sc, sc in last sc, turn.

Row 7: Ch 4, dc in first sc, *ch 2, sk next 2 ch-sps, [sc in next ch-sp, ch 2] 5 times, sc in next ch-sp, ch 2, sk next 2 ch-sps, V-st in next sc; repeat from * across, turn.

Row 8: Ch 4, 2-dc Cl in first ch-sp, ch 3, sk next ch-sp, [sc in next ch-sp, ch 2] 4 times, sc in next ch-sp, ch 3, sk next ch-sp, *Cl-V in next ch-sp, ch 3, sk next ch-sp, [sc in next ch-sp, ch 2] 4 times, sc in next ch-sp, ch 3, sk next ch-sp; repeat from * across to turning ch, 2-dc Cl in turning ch-sp, ch 1, dc in 3rd ch of turning, turn.

Row 9: Ch 4, (3-dc Cl, ch 2, 3-dc Cl) in first ch-sp, ch 1, sk next ch-sp, [sc in next ch-sp, ch 2] 3 times, sc in next ch-sp, ch 1, sk next ch-sp, *(3-dc Cl, [ch 2, 3-dc Cl] 3 times) in next ch-sp, ch 1, sk next ch-sp, [sc in next ch-sp, ch 2] 3 times, sc in next ch-sp, ch 1, sk next ch-sp; repeat from * across to turning ch, (3-dc Cl, ch 2, 3-dc Cl) in turning ch-sp, ch 1, dc in 3rd ch of turning ch, turn.

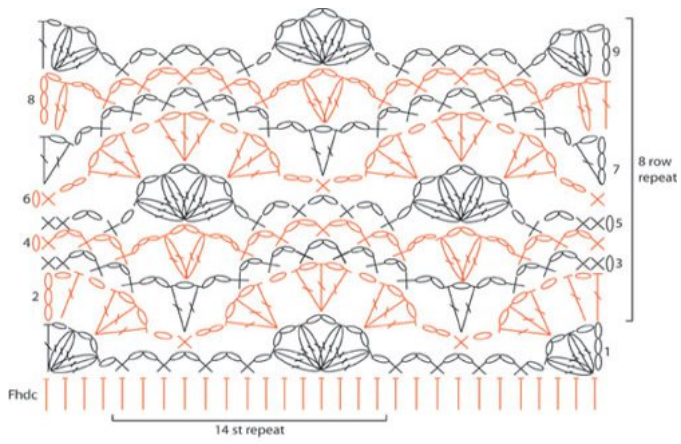
Rows 10–25: Repeat Rows 2–9 twice.

Rows 26–31: Repeat Rows 2–7.

Row 32: Ch 1, sc in first dc, sc in next ch-sp, sc in next dc, 2 sc in next ch-sp, [sc in next sc, sk next ch-sp] 5 times, sc in next sc, 2 sc in next ch-sp, sc in next dc, *sc in next ch-sp, sc in next dc, 2 sc in next ch-sp, [sc in next sc, sk next ch-sp] 5 times, sc in next sc, 2 sc in next ch-sp, sc in next dc; repeat from * across to turning ch, sc in turning ch-sp, sc in 3rd ch of turning ch. Fasten off.

FINISHING

Using yarn needle, weave in all ends. Block lightly, if desired.



- ∞ = chain (ch)
- × = single crochet (sc)
- ┆ = half double crochet (hdc)
- ┆ = double crochet (dc)
- ┆ = 2-dc cluster
- ⊖ = 3-dc cluster
- ∇ = V-st
- ⊖ = Cluster V-st