



## ABBREVIATIONS

**Approx** = Approximately

**Beg** = Beginning

**Cross st** = Skip next 2 stitches.

1 trfp around each next 2 stitches. Working in front of row, 1 trfp around each of 2 skipped stitches

**Ch** = Chain(s)

**Dc** = Double crochet

**Dcbp** = Yoh and draw up a loop around post of next stitch at back of work inserting hook from right to left. (Yoh and draw through 2 loops on hook) twice

**Rep** = Repeat

**Rnd(s)** = Round(s)

**Sc** = Single crochet

**Sp(s)** = Space(s)

**St(s)** = Stitch(es)

**Trbp** = (Yoh) twice and draw up a loop around post of next stitch at back of work inserting hook from right to left. (Yoh and draw through 2 loops on hook) 3 times

**Trfp** = (Yoh) twice and draw up a loop around post of next stitch at front of work inserting hook from right to left. (Yoh and draw through 2 loops on hook) 3 times

**Yoh** = Yarn over hook

## MEASUREMENT

Approx 37" [94 cm] diameter between straight edges.



Michael Sellick  
from the Crochet Crowd



CROCHET | SKILL LEVEL: **EASY TO INTERMEDIATE**

## INSTRUCTIONS

- **Notes:** Ch 2 counts as hdc at beg of rnd.
- Ch 3 counts as dc at beg of rnd.

See diagram on page 3.

**34th rnd:** Ch 3. (1 dcbp around next st. Cross st over next 4 sts) 12 times. 1 dcbp around next st. \*(1 dc. Ch 1. 1 dc) in next corner ch-1 sp. (1 dcbp around next st. Cross st over next 4 sts) 12 times. 1 dcbp around next st. Rep from \* 4 times more. 1 dc in last corner ch-1 sp. Join with sc to top of ch 3. 63 sts between corner ch-1 sps. 12 Cross sts.

**35th rnd:** Ch 3. 1 trbp around each of first 2 sts. (1 trfp around each of next 4 sts. 1 trbp around next st) 12 times. 1 trbp around next st. \*(1 dc. Ch 1. 1 dc) in next corner ch-1 sp. 1 trbp around each of next 2 sts. (1 trfp around each of next 4 sts. 1 trbp around next st) 12 times. 1 trbp around next st. Rep from \* 4 times more. 1 dc in last corner ch-1 sp. Join with sc to top of ch 3. 65 sts between corner ch-1 sps. 12 Cross sts.

**36th rnd:** Ch 3. 1 trbp around each of first 3 sts. (Cross st over next 4 sts. 1 trbp around next st) 12 times. 1 trbp around each of next 2 sts. \*(1 dc. Ch 1. 1 dc) in next corner ch-1 sp. 1 trbp around each of next 3 sts. (Cross st over each of next 4 sts. 1 trbp around next st) 12 times. 1 trbp around each of next 2 sts. Rep from \* 4 times more. 1 dc in last corner ch-1 sp. Join with sc to top of ch 3. 67 sts between corner ch-1 sps. 12 Cross sts.

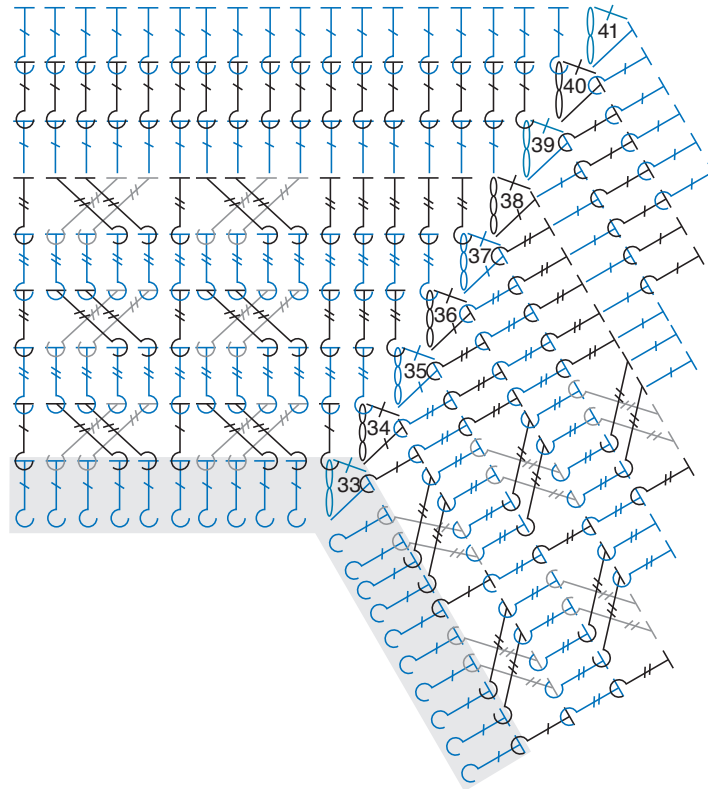
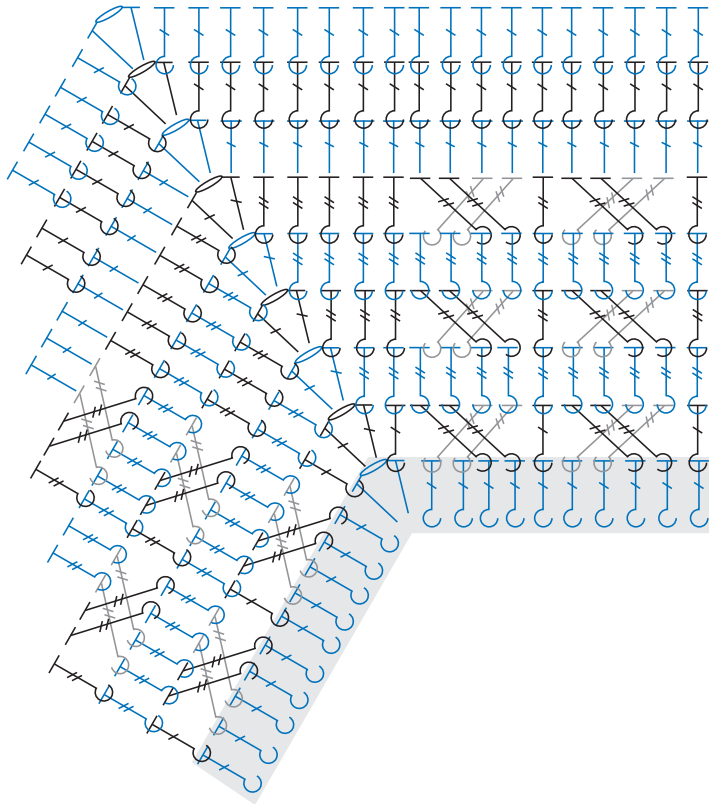
**37th rnd:** Ch 3. 1 trbp around each of first 4 sts. (1 trfp in each of next 4 sts. 1 trbp around next st) 12 times. 1 trbp around each of next 3 sts. \*(1 dc. Ch 1. 1 dc) in next corner ch-1 sp. 1 trbp around each of next 4 sts. (1 trfp around each of next 4 sts. 1 trbp around next st) 12 times. 1 trbp around each of next 3 sts. Rep from \* 4 times more. 1 dc in last corner ch-1 sp. Join with sc to top of ch 3. 69 sts between corner ch-1 sps. 12 Cross sts.







**38th rnd:** Ch 3. 1 trbp around each of first 5 sts. (Cross st over next 4 sts. 1 trbp around next st) 12 times. 1 trbp around each of next 4 sts. \*(1 dc. Ch 1. 1 dc) in next corner ch-1 sp. 1 trbp around each of next 5 sts. (Cross st over next 4 sts. 1 trbp around next st) 12 times. 1 trbp around each of next 4 sts. Rep from \* 4 times more. 1 dc in last corner ch-1 sp. Join with sc to top of ch 3. 71 sts between corner ch-1 sps. 12 Cross sts.

**39th rnd:** Ch 2.. 1 dc in each st to next corner ch-1 sp. \*(1 hdc. Ch 1. 1 hdc) in next corner ch-1 sp. 1 dc in each st to next corner ch-1 sp. Rep from \* 4 times more. 1 hdc in last corner ch-1 sp. Join with sc to top of ch 2. 73 sts between corner ch-1 sps.

**40th and 41st rnds:** Ch 2. 1 dcbp around each st to next corner ch-1 sp. \*(1 hdc. Ch 1. 1 hdc) in next corner ch-1 sp. 1 dcbp around each st to next corner ch-1 sp. Rep from \* 4 times more. 1 hdc in last corner ch-1 sp. Join with sc to top of ch 2. 77 sts between corner ch-1 sps at end of 41st rnd.

See you next week!



- STITCH KEY**
-  = chain (ch)
  -  = single crochet (sc)
  -  = double crochet (dc)
  -  = back post double crochet (dcbp)
  -  = front post treble crochet (trfp)
  -  = back post treble crochet (trbp)

RNDS 34-41