



ARAN TEXTURE TWINSET

SIZES

Bust measurement

Small	30-32 ins [76-81 cm]
Medium	34-36 ins [86-91 cm]
Large	38-40 ins [97-102 cm]
Extra-Large	42-44 ins [107-112cm]

SHELL

Finished bust

Small	32 ins [81 cm]
Medium	35 ins [89 cm]
Large	41 ins [104 cm]
Extra-Large	44½ ins [113 cm]

CARDIGAN

Finished bust

Small	36¾ ins [93.5 cm]
Medium	40 ins [102 cm]
Large	43 ins [109 cm]
Extra-Large	46¾ ins [118.5 cm]

MATERIALS

Patons Astra (50 g/1.75 oz)

Size	S	M	L	XL	
Shell	7	7	8	8	balls
Cardigan	11	12	13	14	balls

Sizes 3.75 (U.S. 5) and 4 mm (U.S. 6) knitting needles **or size needed to obtain tension**. 1 st holder for Shell or Cardigan. 5 buttons for Cardigan.

TENSION

22 sts and 30 rows = 4 ins [10 cm] in stocking st.

ABBREVIATIONS

C4B = slip next 2 sts onto a cable needle and leave at back of work. K2, then K2 from cable needle.

C4F = slip next 2 sts onto a cable needle and leave at front of work. K2, then K2 from cable needle.

C5B = slip next 3 sts onto a cable needle and leave at back of work. K2.

Purl the st at left end of cable needle, then knit the rem 2 sts on cable needle. **MB** = (K1. P1. K1. P1) all in next st. **Turn.** P4. **Turn.** K4. **Turn.** (P2tog) twice. **Turn.** K2tog. Bobble made. **T3B** = slip next st onto a cable needle and leave at back of work. K2, then P1 from cable needle.

T3F = slip next 2 sts onto a cable needle and leave at front of work. P1, then K2 from cable needle.

INSTRUCTIONS

The instructions are written for smallest size. If changes are necessary for larger sizes the instructions will be written thus ().

Refer to charts for Panel Pat instructions, or follow written directions given below:

Panel Pat A (worked over 6 sts).

1st row: (RS). P2. K4.

2nd and alt rows: P4. K2.

3rd row: P2. C4B.

5th row: As 1st row.

7th row: As 3rd row.

9th, 11th, 13th and 15th rows: As 1st row.

17th row: As 3rd row.

19th, 21st, 23rd and 25th rows: As 1st row.

27th row: As 3rd row.

28th row: As 2nd row.

These 28 rows form Panel Pat A.

Panel Pat B (worked over 10 sts).

1st row: (RS). P4. K4. P2.

2nd row: K2. P4. K4.

3rd to 6th rows: As 1st and 2nd rows twice more.

7th row: P4. C4B. P2.

8th row: As 2nd row.

9th row: P3. T3B. T3F. P1.



ABBREVIATIONS: www.patonsyarns.com/glossary

10th row: K1. P2. K2. P2. K3.
11th row: P2. T3B. P2. T3F.
12th row: P2. K4. P2. K2.
13th row: P2. T3F. P2. T3B.
14th row: As 10th row.
15th row: P3. T3F. T3B. P1.
16th row: As 2nd row.
17th to 26th rows: As 7th to 16th rows.
27th and 28th rows: As 7th and 8th rows.
 These 28 rows form Panel Pat B.

Panel Pat C (worked over 13 sts).

1st row: (RS). T3B. (K1. P1) 3 times. K1. T3F.
2nd row: P2. (K1. P1) 4 times. K1. P2.
3rd row: T3F. (P1. K1) 3 times. P1. T3B.
4th row: K1. P2. (K1. P1) 4 times. P1. K1.
5th row: P1. T3F. (P1. K1) twice. P1. T3B. P1.
6th row: K2. P2. (K1. P1) 3 times. P1. K2.
7th row: P2. T3F. P1. K1. P1. T3B. P2.
8th row: K3. P2. K1. P1. K1. P2. K3.
9th row: P3. T3F. P1. T3B. P3.
10th row: K4. P2. K1. P2. K4.
11th row: P4. C5B. P4.
12th row: As 10th row.
13th row: P3. T3B. P1. T3F. P3.
14th row: (K3. P2) twice. K3.
15th row: P2. T3B. P1. MB. P1. T3F. P2.
16th row: K2. P2. K5. P2. K2.
17th row: P2. T3F. P3. T3B. P2.
18th row: As 14th row.
19th row: As 9th row.
20th row: As 10th row.
21st row: As 11th row.
22nd row: As 10th row.
23rd row: P3. T3B. K1. T3F. P3.
24th row: As 8th row.
25th row: P2. T3B. K1. P1. K1. T3F. P2.
26th row: As 6th row.
27th row: P1. T3B. (K1. P1) twice.

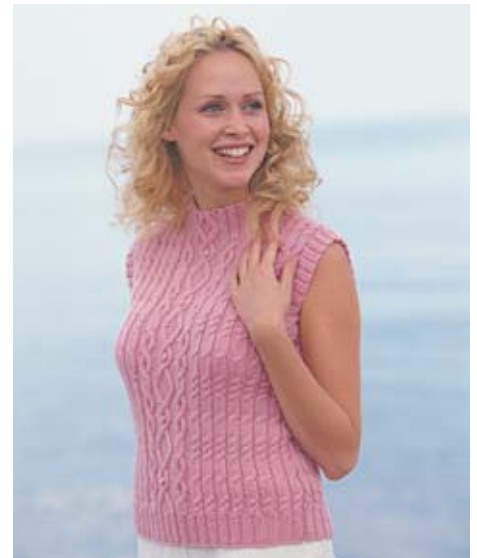
K1. T3F. P1.
28th row: As 4th row.
 These 28 rows form Panel Pat C.

Panel Pat D (worked over 10 sts).

1st row: (RS). P2. K4. P4.
2nd row: K4. P4. K2.
3rd to 6th rows: As 1st and 2nd rows twice more.
7th row: P2. C4F. P4.
8th row: As 2nd row.
9th row: P1. T3B. T3F. P3.
10th row: K3. P2. K2. P2. K1.
11th row: T3B. P2. T3F. P2.
12th row: K2. P2. K4. P2.
13th row: T3F. P2. T3B. P2.
14th row: As 10th row.
15th row: P1. T3F. T3B. P3.
16th row: As 2nd row.
17th to 26th rows: As 7th to 16th rows.
27th and 28th rows: As 7th and 8th rows.
 These 28 rows form Panel Pat D.

Panel Pat E (worked over 6 sts).

1st row: (RS). K4. P2.
2nd and alt rows: K2. P4.
3rd row: C4F. P2.
5th row: As 1st row.
7th row: As 3rd row.
9th, 11th, 13th and 15th rows: As 1st row.
17th row: As 3rd row.
19th, 21st, 23rd and 25th rows: As 1st row.
27th row: As 3rd row.
28th row: As 2nd row.
 These 28 rows form Panel Pat A.



SHELL BACK

**With smaller needles cast on 94 (102-118-126) sts.
1st row: (RS). P2. *K2. P2. Rep from * to end of row.
2nd row: K2. *P2. K2. Rep from * to end of row.
 Rep last 2 rows (K2. P2) ribbing for 2 ins [5 cm], ending with RS facing for next row and inc 23 (27-35-39) sts evenly across last row. 117 (129-153-165) sts.

Change to larger needles and proceed as follows:

1st row: (RS). (Work 1st row of Panel Pat A) 7 (8-10-11) times. Work 1st row of Panel Pat B. Work 1st row of Panel Pat C. Work 1st row of Panel Pat D. (Work 1st row of Panel Pat E) 7 (8-10-11) times.
2nd row: (Work 2nd row of Panel Pat E) 7 (8-10-11) times. Work 2nd row of Panel Pat D. Work 2nd row of Panel Pat C. Work 2nd row of Panel Pat B. (Work 2nd row of Panel Pat A) 7 (8-10-11) times.
 Panel pats are now in position.

Cont in pat, keeping cont of panel pats as placed in last 2 rows, until work from beg measures 12 (12½-13-13½) ins [30.5 (32-33-34.5) cm], ending with RS facing for next row.

Armhole shaping: Keeping cont of pat, cast off 3 sts beg next 8 rows. 93 (105-129-141) sts.**

Cont even in pat until armhole measures 7 (7½-8-8½) ins [18 (19-20.5-21.5) cm], ending with RS facing for next row.

Shoulder shaping: Cast off 7 (9-12-14) sts beg next 4 rows, then 7 (9-13-15) sts beg following 2 rows. Leave rem 51 (51-55-55) sts on spare needle.

FRONT

Work from ** to ** as given for Back.

Cont even in pat until armhole measures 5 (5½-6-6½) ins [12.5 (14-15-16.5) cm], ending with RS facing for next row.

Neck shaping: Next row: Pat across 38 (44-56-62) sts (neck edge). **Turn.** Leave rem sts on spare needle.

Next row: Cast off 6 (6-8-8) sts. Pat to end of row.

Keeping cont of pat, dec 1 st at neck edge on next 11 rows. 21 (27-37-43) sts.

Cont even in pat, until work from beg measures same length as Back to beg of shoulder shaping ending with RS facing for next row.

Shoulder shaping: Cast off 7 (9-12-14) sts beg next and following alt row. Work 1 row even in pat. Cast off rem 7

(9-13-15) sts.

With RS of work facing, slip next 17 sts from spare needle onto a st holder. Join yarn to rem sts and pat to end of row.

Work 1 row even in pat.

Next row: (RS). Cast off 6 (6-8-8) sts. Pat to end of row.

Keeping cont of pat, dec 1 st at neck edge on next 11 rows. 21 (27-37-43) sts.

Cont even in pat, until work from beg measures same length as Back to beg of shoulder shaping ending with WS facing for next row.

Shoulder shaping: Cast off 7 (9-12-14) sts beg next and following alt row. Work 1 row even in pat. Cast off rem 7 (9-13-15) sts.

FINISHING

Pin garment pieces to measurements. Cover with a damp cloth leaving to dry.

Neckband: Sew right shoulder seam. With RS of work facing and smaller needles, pick up and knit 20 (20-24-24) sts down left front neck edge. Work appropriate row of pat across 17 sts from front st holder. Pick up and knit 20 (20-24-24) sts up right front neck edge. K51 (51-55-55) from back st holder, dec 3 sts evenly across. 105 (105-117-117) sts.

Next row: (WS). P2. (K2. P2) 17 (17-19-19) times. Work next 13 sts in appropriate row of Panel Pat C. P2. *K2. P2. Rep from * to end of row.

Keeping cont of ribbing and Panel Pat C, work until neckband from beg measures approx 2½ ins [6 cm], ending with a 10th row of Panel Pat C at center front. Cast off in pat.

Sew left shoulder and neckband seam.

Armhole edging: With RS facing, pick up and knit 94 (102-106-114) sts along armhole edge. Beg on a 2nd row, work 7 rows in (K2. P2) ribbing as given for Back. Cast off in ribbing. Sew



side seams.

CARDIGAN

BACK

With smaller needles cast on 106 (118-130-138) sts.

1st row (RS). P2. *K2. P2. Rep from * to end of row.

2nd row: K2. *P2. K2. Rep from * to end of row.

Rep last 2 rows (K2. P2) ribbing for 2 ins [5 cm], ending with RS facing for next row and inc 26 (26-26-30) sts evenly across last row. 132 (144-156-168) sts.

Change to larger needles and proceed as follows:

1st row: (RS). (Work 1st row of Panel Pat A) 7 (8-9-10) times. Work 1st row of Panel Pat B. Work 1st row of Panel Pat C. P2. Work 1st row of Panel Pat C. Work 1st row of Panel Pat D. (Work 1st row of Panel Pat E) 7 (8-9-10) times.

2nd row: (Work 2nd row of Panel Pat E) 7 (8-9-10) times. Work 2nd row of Panel Pat D. Work 2nd row of Panel Pat C. P2. Work 2nd row of Panel Pat C. Work 2nd row of Panel Pat B. (Work 2nd row of

Panel Pat A) 7 (8-9-10) times.

Panel pats are now in position.

Cont in pat, keeping cont of panel pats as placed in last 2 rows, until work from beg measures 12½ (13-13½-14) ins [32 (33-34.5-35.5) cm], ending with RS facing for next row.

Armhole shaping: Keeping cont of pat, cast off 3 sts beg next 8 rows. 108 (120-132-144) sts.

Cont even in pat until armhole measures 7½ (8-8½-9) ins [19 (20.5-21.5-23) cm], ending with RS facing for next row.

Shoulder shaping: Cast off 9 (11-12-14) sts beg next 6 rows. Leave rem 54 (54-60-60) sts on st holder.

RIGHT FRONT

With smaller needles cast on 58 (62-66-70) sts and work 2 ins [5 cm] in (K2. P2) ribbing as given for Back, ending with RS facing for next row and inc 9 (11-13-15) sts evenly across last row. 67 (73-79-85) sts.

Change to larger needles and proceed as follows:

1st row: (RS). P2. Work 1st row of Panel Pat C. Work 1st row of Panel Pat D. (Work 1st row of Panel Pat E) 7 (8-9-10) times.

2nd row: (Work 2nd row of Panel Pat E) 7 (8-9-10) times. Work 2nd row of Panel Pat D. Work 2nd row of Panel Pat C. K2.

Panel pats are now in position.

Cont in pat, keeping cont of panel pats as placed in last 2 rows, until work from beg measures 12½ (13-13½-14) ins [32 (33-34.5-35.5) cm], ending with WS facing for next row.

Armhole shaping: Keeping cont of pat,

cast off 3 sts beg next and following alt rows 3 times more. 55 (61-67-73) sts.

Cont even in pat until work from beg measures 18 (19-20-21) ins [45.5 (48-51-53.5) cm], ending with RS facing for next row.

Neck shaping: Cast off 7 (7-8-8) sts beg next and following alt row. Keeping cont of pat, dec 1 st at neck edge on next 14 (14-15-15) rows. 27 (33-36-42) sts.

Cont even in pat until work from beg measures same length as Back to beg of shoulder shaping ending with **WS** facing for next row.

Shoulder shaping: Cast off 9 (11-12-14) sts beg next and following alt row. Work 1 row even in pat. Cast off rem 9 (11-12-14) sts.

LEFT FRONT

Work from *** to *** as given for Right Front.

Change to larger needles and proceed as follows:

1st row: (RS). (Work 1st row of Panel Pat A) 7 (8-9-10) times. Work 1st row of Panel Pat B. Work 1st row of Panel Pat C. P2.

2nd row: K2. Work 2nd row of Panel Pat C. Work 2nd row of Panel Pat B. (Work 2nd row of Panel Pat A) 7 (8-9-10) times.

Panel pats are now in position.

Cont in pat, keeping cont of panel pats as placed in last 2 rows, until work from beg measures 12½ (13-13½-14) ins [32 (33-34.5-35.5) cm], ending with RS facing for next row.

Armhole shaping: Keeping cont of pat, cast off 3 sts beg next and following alt

rows 3 times more. 55 (61-67-73) sts. Cont even in pat until work from beg measures 18 (19-20-21) ins [45.5 (48-51-53.5) cm], ending with WS facing for next row.

Neck shaping: Cast off 7 (7-8-8) sts beg next and following alt row. Keeping cont of pat, dec 1 st at neck edge on next 14 (14-15-15) rows. 27 (33-36-42) sts.

Cont even in pat until work from beg measures same length as Back to beg of shoulder shaping ending with RS facing for next row.

Shoulder shaping: Cast off 9 (11-12-14) sts beg next and following alt row. Work 1 row even in pat. Cast off rem 9 (11-12-14) sts.

SLEEVES

With smaller needles cast on 58 (58-66-66) sts. Work 3 ins [7.5 cm] in (K2. P2) ribbing as given for Back, ending with RS facing for next row, and inc 9 (9-13-13) sts evenly across last row. 67 (67-79-79) sts.

Change to larger needles and proceed as follows:

1st row: K1. (Work 1st row of Panel Pat A) 4 (4-5-5) times. P2. Work 1st row of Panel Pat C. P2. (Work 1st row of Panel Pat E) 4 (4-5-5) times. K1.

2nd row: P1. (Work 2nd row of Panel Pat E) 4 (4-5-5) times. K2. Work 2nd row of Panel Pat C. K2. (Work 2nd row of Panel Pat A) 4 (4-5-5) times. P1.

Panel pats are now in position.

Cont in pat, keeping cont of panel pats as placed in last 2 rows, **at the same time**, inc 1 st at each end of needle on next and every alt row twice more, then

every following 6th row to 97 (103-109-117) sts, taking inc sts into Panel Pat A on right edge and Panel Pat E on left edge.

Cont even in pat until work from beg measures 18 (18½-19-19½) ins [45.5 (47-48-49.5) cm], ending with RS facing for next row.

Shape sleeve top: Keeping cont of pat, cast off 6 (7-8-9) sts beg next 6 rows. Cast off 3 sts beg next 4 rows. Dec 1 st at each end of needle every row until there are 27 sts. Cast off in pat.

FINISHING

Pin garment pieces to measurements. Cover with a damp cloth leaving to dry.

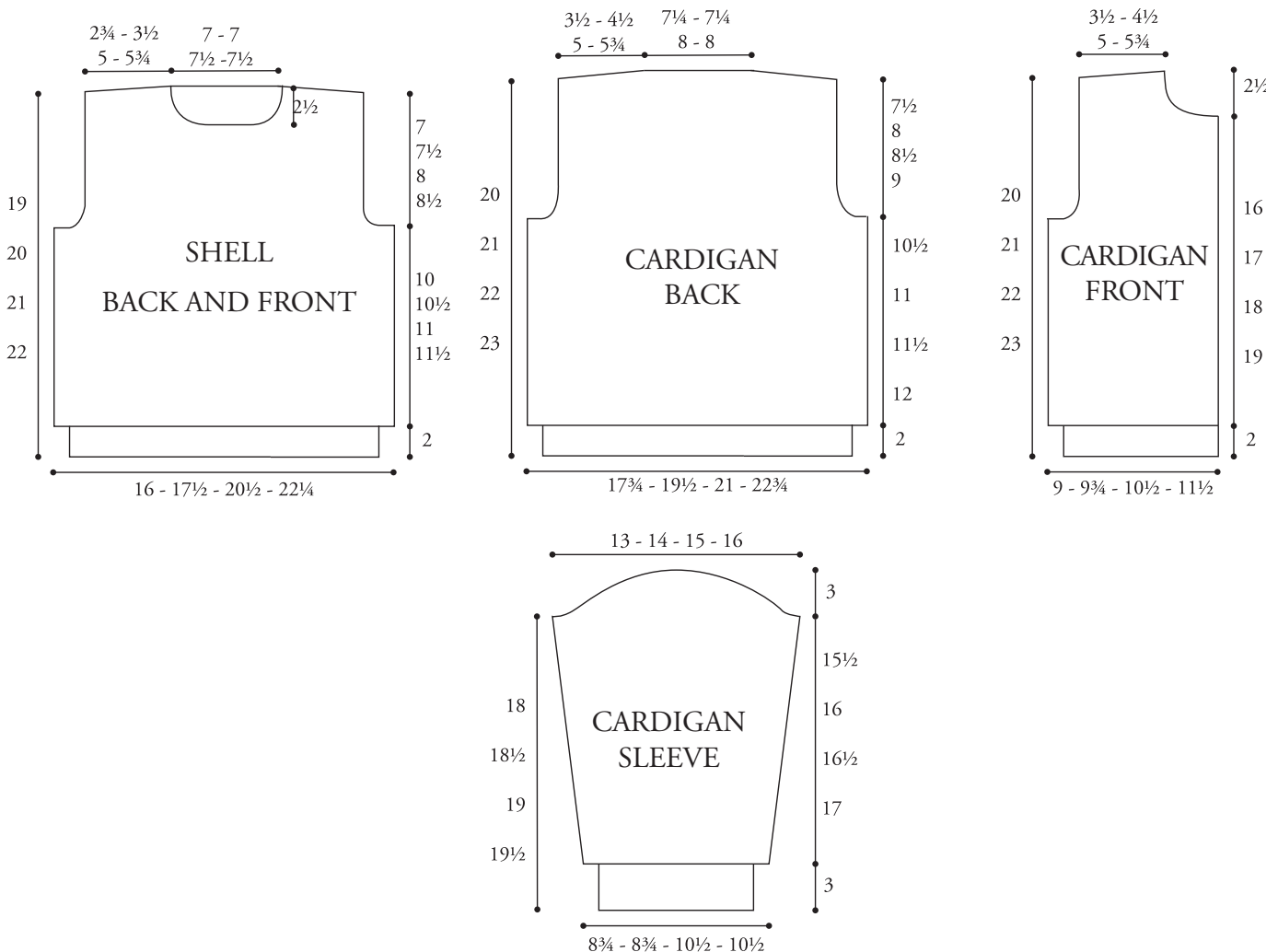
Neckband: Sew shoulder seams. With RS of work facing and smaller needles, pick up and knit 30 (30-33-33) sts up Right Front neck edge. K54 (54-60-60) from Back st holder dec 4 sts evenly across. Pick up and knit 30 (30-33-33) sts down Left Front neck edge. 110 (110-122-122) sts. Beg on a 2nd row, work 7 rows (K2. P2) ribbing as given for Back. Cast off in ribbing.

Buttonhole Band: With RS of work facing and smaller needles, pick up and knit 134 (134-154-154) sts along Right Front edge, including side edge of neckband. Beg on a 2nd row, work 3 rows (K2. P2) ribbing as given for Back.

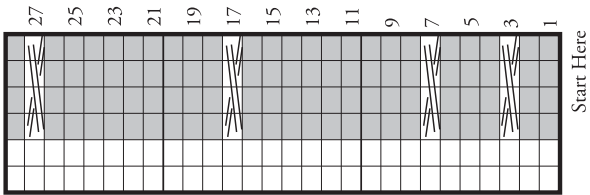
4th row: (RS). K2. P2. *Cast off 2 sts. Rib 29 (29-34-34) sts (including st on needle after cast off). Rep from * 3 times more. Cast off 2 sts. Rib to end of row. 5 buttonholes.

5th row: Rib, casting on 2 sts over cast off sts. Work a further 2 rows ribbing. Cast off in ribbing.

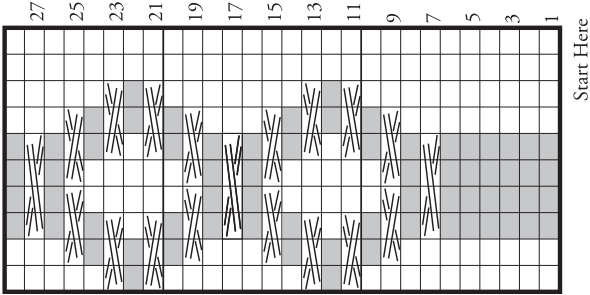
Button Band: Work as given for Buttonhole Band, picking up sts along Left Front edge and omitting all reference to buttonholes. Sew side and sleeve seams. Sew in sleeves. Sew buttons to correspond to buttonholes.



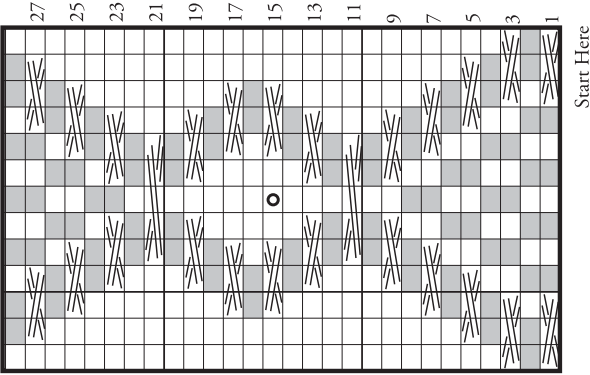
PANEL PAT A



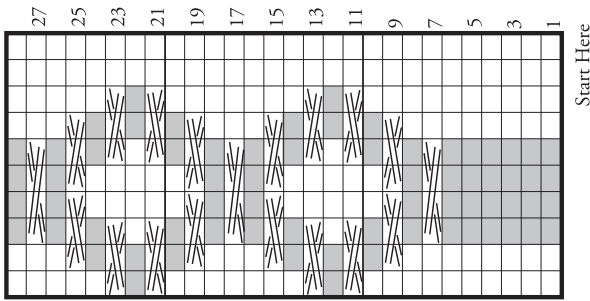
PANEL PAT B



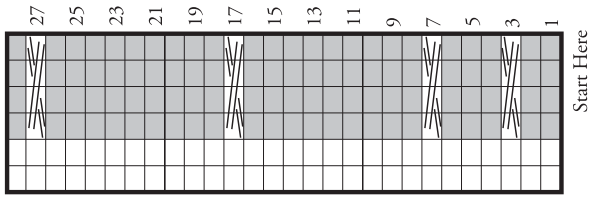
PANEL PAT C



PANEL PAT D



PANEL PAT E



Key

■ = Knit on RS, purl on WS.

□ = Purl on RS, knit on WS.

= C4B

= C4F

= T3B

= T3F

= MB

= C5B



... a part of your life.

P.O. Box 40, Listowel ON N4W 3H3