



MATERIALS

Bernat® Blanket Brights™ (10.5 oz/300 g; 220 yds/201 m)

Contrast A Pixie Pink (12008) **4 balls or 670 yds/613 m**

Contrast B Lemonade Varg. (12012) **3 balls or 580 yds/530 m**

Size U.S. L/11 (8 mm) crochet hook **or size needed to obtain gauge.**

ABBREVIATIONS:

Approx = Approximate(ly)

Beg = Begin(ning)

Ch = Chain(s)

Cont = Continue

Dc = Double crochet

Pat = Pattern

Rep = Repeat

RS = Right side

Sc = Single crochet

 CROCHET | SKILL LEVEL: EASY

MEASUREMENTS

Approx 55 x 60" [139.5 x 152.5 cm].

GAUGE

7 sc and 8 rows = 4" [10 cm].

INSTRUCTIONS

With A, ch 101.

1st row: (RS). 1 sc in 2nd ch from hook. 1 sc in each of next 3 ch. *1 dc in each of next 4 ch. 1 sc in each of next 4 ch. Rep from * to end of ch. Turn.

2nd row: Ch 1. *1 sc in each of next 4 sc. 1 dc in each of next 4 dc. Rep from * to last 4 sc. 1 sc in each of next 4 sc. Join B. Turn.

3rd row: With B, ch 3 (counts as dc). 1 dc in each of next 3 sts. *1 sc in each of next 4 sts. 1 dc in each of next 4 sts. Rep from * to end of row. Turn.

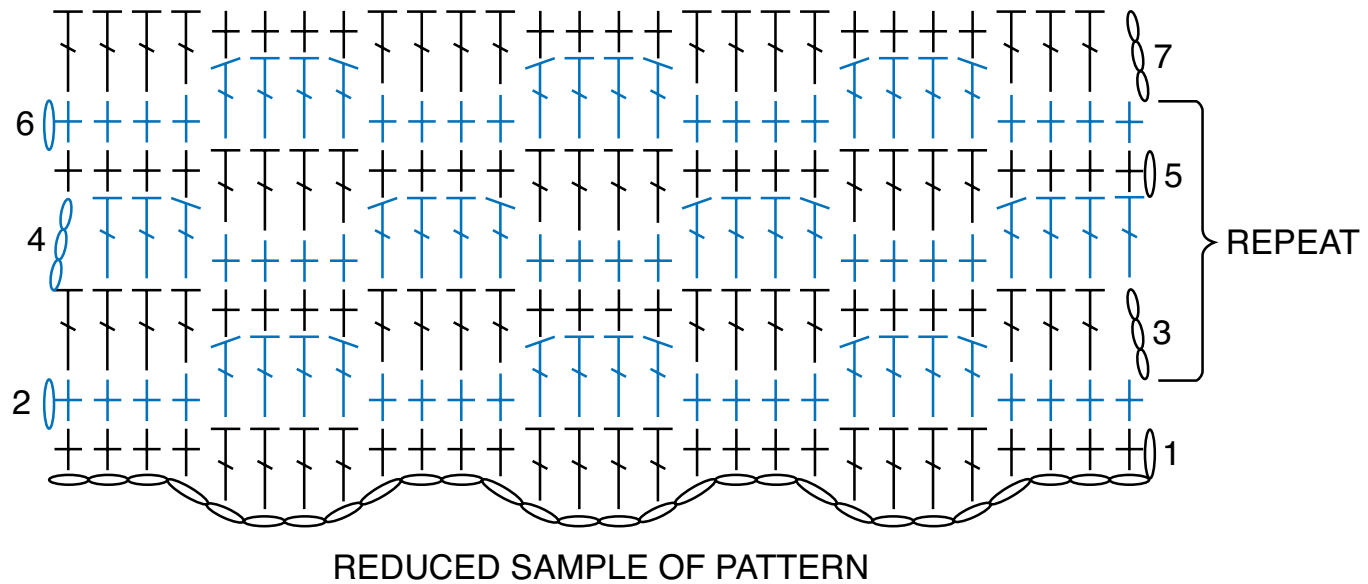
4th row: As 3rd row. Join A.




5th row: With A, ch 1. 1 sc in each of first 4 sts. *1 dc in each of next 4 sts. Rep from * to end of row. Turn.

6th row: As 5th row. Join B.

Rep 3rd to 6th rows to form pat.

Cont in pat, working 2 rows each in A and B until work from beg measures approx 60" [152.5 cm], ending on a 6th row of pat. Fasten off.



- STITCH KEY**
-  = chain (ch)
 -  = single crochet (sc)
 -  = double crochet (dc)