



Tamara Kelly
from Moogly Blog



CROCHET | SKILL LEVEL: EASY

ABBREVIATIONS

Alt = Alternate

Approx = Approximately

Beg = Begin(ning)

Ch = Chain(s)

Dcfp = Yoh and draw up a loop around post of next stitch at front of work, inserting hook from right to left. (Yoh and draw through 2 loops on hook) twice.

Pat = Pattern

Rem = Remain(s)(ing)

Rep = Repeat(s)

Rnd(s) = Round(s)

RS = Right side

Sc = Single crochet

Scbl = Single crochet in back loop only

Sl st = Slip stitch

St(s) = Stitch(es)

Tog = Together

WS = Wrong side

YoH = Yarn over hook

MATERIALS

Patons® Inspired™ (5.3 oz/150 g; 222 yds/203 m)

Main Color (MC) Soft Cream (92001) **1 ball**

Contrast A Charcoal Heather (92008) **1 ball**

Size U.S. 10½ (6.5 mm) crochet hook **or size needed to obtain gauge.** Yarn needle.

MEASUREMENTS

Approx 9" [23 cm] in diameter x 8" [20.5 cm] tall.

GAUGE

12 sc and 15 rows = 4" [10 cm].

INSTRUCTIONS

Notes:

- Basket is made in two pieces that are crocheted tog.
- All rnds are joined with a sl st to first st.

Outer Basket

**With MC, beg using magic loop method, demonstrated [here](#).

1st rnd: (RS). Ch 1. 6 sc in ring. Join. 6 sc.

2nd rnd: Ch 1. 2 sc in each st around. Join. 12 sc.

3rd rnd: Ch 1. *2 sc in next st. 1 sc in next st. Rep from * around. Join. 18 sc.

4th rnd: Ch 1. *1 sc in each of next 2 sts. 2 sc in next st. Rep from * around. Join. 24 sc.

5th rnd: Ch 1. *2 sc in next st. 1 sc in next 3 sts. Rep from * around. Join. 30 sc.

6th rnd: Ch 1. *1 sc in each of next 2 sts. 2 sc in next st. 1 sc in each of next 2 sts. Rep from * around. Join. 36 sc.

7th rnd: Ch 1. *2 sc in next st. 1 sc in each of next 5 sts. Rep from * around. Join. 42 sc.

8th rnd: Ch 1. *1 sc in each of next 3 sts. 2 sc in next st. 1 sc in each of next 3 sts. Rep from * around. Join. 48 sc.

9th rnd: Ch 1. *2 sc in next st. 1 sc in each of next 7 sts. Rep from * around. Join. 54 sc.

10th rnd: Ch 1. *1 sc in each of next 4 sts. 2 sc in next st. 1 sc in each of next 4 sts. Rep from * around. Join. 60 sc.

11th rnd: Ch 1. *1 sc in each of next 9 sts. 2 sc in next st. Rep from * around. Join. 66 sc.**

12th rnd: Ch 1. *1 sc in each of next 5 sts. 2 sc in next st. 1 sc in each of next 5 sts. Rep from * around. Join. 72 sc.

Set Up for Hourglass Pat (see page 3):

1st rnd: Ch 1. 1 sc in each st around. Join with A.

2nd rnd: With A, ch 1. 1 scbl in each st around. Join with MC.

Proceed in Hourglass Pat as follows:

1st rnd: With MC, ch 1. *1 scbl in each of next 2 sts. 1 dcfp around each of next 2 sts 2 rnds below. 1 scbl in each of next 2 sts. Rep from * around. Join with A.

2nd and alt rnds: With A, ch 1. 1 scbl in each st to end of rnd. Join with MC.

3rd rnd: With MC, ch 1. *1 dcfp around next dcfp 2 rnds below. Skip next dcfp 2 rnds below. 1 scbl

in each of next 4 sts. 1 dcfp around skipped dcfp 2 rnds below. Rep from * to end of rnd. Join with A.

5th rnd: With MC, ch 1. *1 dcfp around next dcfp 2 rnds below. 1 scbl in each of next 4 sts. 1 dcfp around next dcfp 2 rnds below. Rep from * around. Join with A.

7th rnd: As 5th rnd.

9th rnd: With MC, ch 1. 1 scbl in each of first 2 sts. 1 dcfp around first dcfp of rnd 2 rnds below. 1 dcfp around next dcfp 2 rnds below. Skip next dcfp 2 rnds below.

1 scbl in each of next 2 sts. *1 scbl in each of next 2 sts. 1 dcfp around skipped dcfp 2 rnds below. 1 dcfp in next dcfp 2 rnds below. Skip next dcfp 2 rnds below. 1 scbl in each of next 2 sts. Rep from * around. Join with A.

11th rnd: With MC, ch 1. *1 scbl in each of next 2 sts. 1 dcfp around each of next 2 dcfp 2 rnds below. 1 scbl in each of next 2 sts. Rep from * around. Join with A.

13th rnd: As 11th rnd.

14th to 23rd rnds: As 2nd to 11th rnds. Join with MC at end of 23rd rnd.

24th rnd: With MC, ch 1. 1 sc in each st around. Join. Fasten off.

Inner Basket

Work from ** to ** as given for Outer Basket.

12th to 19th rnds: Ch 1. 1 sc in each st around. Join. At end of 19th rnd, join with A and break MC.

20th to 36th rnds: With A, ch 1. 1 sc in each st around. Join. **Do not** fasten off.

Assembly

Insert Inner Basket into Outer Basket with WS facing.

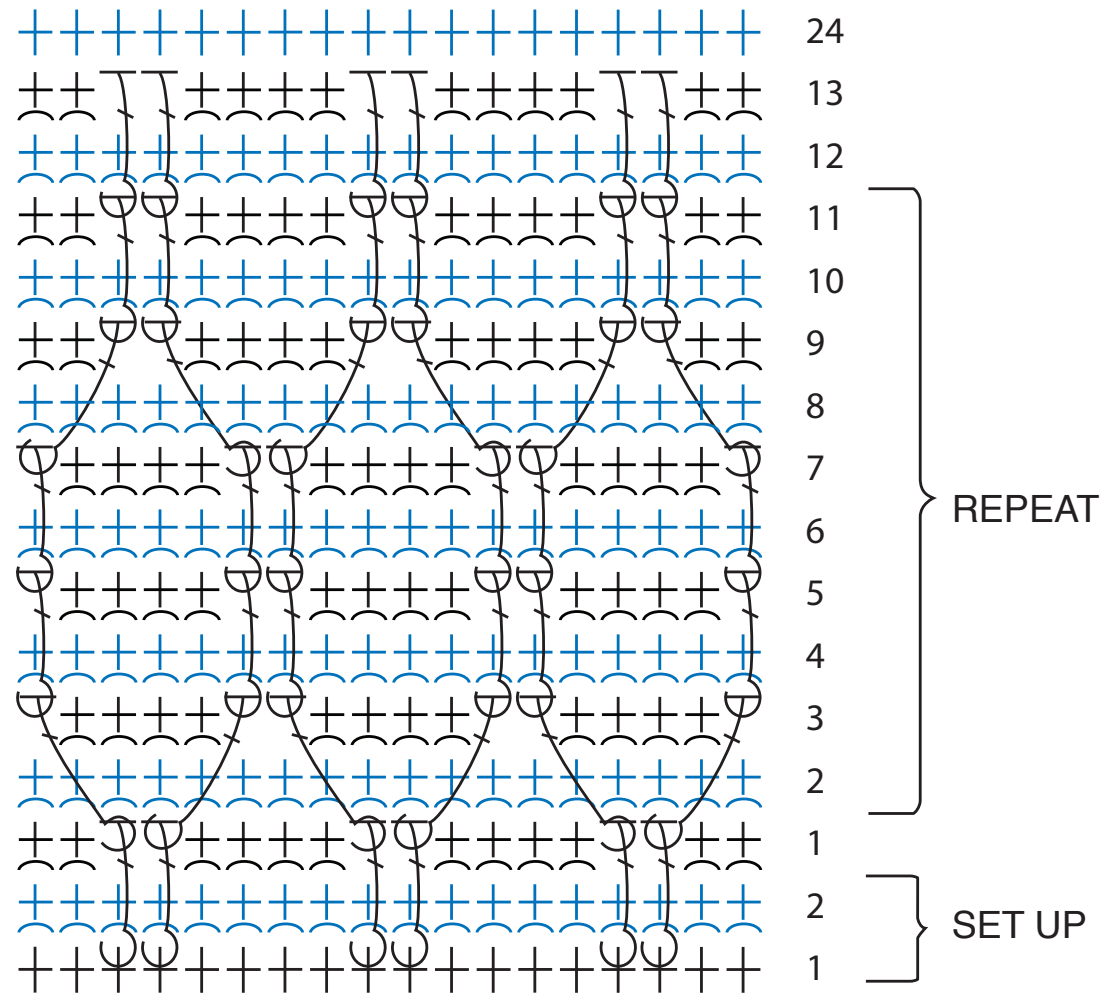
1st rnd: With A, ch 1. *Working in back loops only* for Outer Basket, and both loops for Inner Basket, work 1 sc into each st around. Join.

2nd rnd: Ch 1. 1 sc in each st around. Join. Fasten off.



Key

- = chain (ch)
- ⊥ = single crochet (sc)
- ⊥ = single crochet in back loop (scl)
- ⊥ = front post dc (dcfp)



REDUCED SAMPLE OF PATTERN