

## Baby's Blocks (to crochet)

### MATERIALS

**Note:** With 1 ball of **Lily® Sugar 'n Cream** (Solids: 70.9 g/2.5 oz/109 m/120 yds), you can make 1 Large Block or 2 Small Blocks

### GRAPHIC BLOCKS

#### Lily® Sugar 'n Cream

(Solids: 70.9 g/2.5 oz/109 m/120 yds)

1 ball each of: White (MC) and Lt Blue, Lilac or Aqua (A).

### STRIPEY BLOCKS

#### Lily® Sugar 'n Cream

(Ombres: 56.7 g/2 oz/86 m/95 yds):

1 ball of Ombree (MC);

(Solids: 70.9 g/2.5 oz/109 m/120 yds):

1 ball each of: White or Aqua (A);  
Blue or Yellow or Pink (B);  
Green or Peach or Yellow (C);  
Yellow or Lilac or Green (D).

### FLOWER BLOCKS

#### Lily® Sugar 'n Cream

(Solids: 70.9 g/2.5 oz/109 m/120 yds):

1 ball each of: Lilac (MC); Peach (A); Aqua (B) and Pink (C).

Size 3.5 mm (U.S. E or 4) crochet hook **or size needed to obtain gauge.** Stuffing.

### GAUGE

16 sc and 20 rows = 4 ins [10 cm]

### INSTRUCTIONS

**Note:** When working from charts, wind small balls of the colors to be used, one for each separate area of color in the design. Start new color at appropriate points. To change colors, draw new color through last 2 loops on hook to complete a st, then proceed.

### LARGE GRAPHIC BLOCKS

With MC, ch 14. With A, ch 15. With MC, ch 17.

**1st row:** (RS). With MC, 1 sc in 2nd ch from hook. 1 sc in each of next 14 ch. With A, 1 sc in each of next 15 ch. With MC, 1 sc in each of next 15 ch. Ch 1. Turn. Ch 1. 45 sc.

1st row of Chart II is completed.

Cont in Chart I, reading **RS** rows from **right** to left and **WS** rows from **left** to right, until 18th row of Chart II is completed. Break yarn.

**Next row:** (RS). Miss first 15 sc. Join MC with sl st to next sc. Ch 1. 1 sc in same sp as last sl st. Work 19th row of Chart I across next 14 sts. Cont in Chart I to end of chart. Fasten off.

With contrast color and RS facing, crochet sides tog to form a cube, leaving one side open for stuffing. Stuff Block into cube shape. Crochet opening closed.

### SMALL GRAPHIC BLOCKS

With A, ch 10. With MC, ch 11. With A, ch 13.

**1st row:** (RS). With A, 1 sc in 2nd ch from hook. 1 sc in each of next 10 ch. With MC, 1 sc in each of next 11 ch. With A, 1 sc in each of next 11 ch. Ch 1. Turn. 33 sc.

**2nd row:** With A, 1 sc in each of next 11 sc. With MC, 1 sc in each of next 11 sc. With A, 1 sc in each of next 11 sc. Ch 1. Turn.

Rep last row 10 times more. Fasten off.

**\*\*With RS of work facing, miss first 11 sc. Join A with sl st to next sc. Ch 1. 1 sc in same sp as last sl st. 1 sc in each of next 10 sc. Ch 1. Turn.**

With A, work 11 rows even in sc, joining MC at end of last row.

With MC, work 12 rows even in sc, joining A at end of last row.

With A, work 12 rows even in sc. Fasten off.\*\*

With contrast color and RS facing, crochet sides tog to form a cube, leaving one side open for stuffing. Stuff Block into cube shape. Crochet opening closed.

### LARGE STRIPEY BLOCKS

With B, ch 14. With MC, ch 15. With D, ch 17.

**1st row:** (RS). With D, 1 sc in 2nd ch from hook. 1 sc in each of next 14 ch. With MC, 1 sc in each of next 15 ch. With B, 1 sc in each of next 15 ch. Ch 1. Turn. 45 sc.

1st row of Chart II is completed.

Cont in Chart II, reading **RS** rows from **right** to left and **WS** rows from **left** to right, until 18th row of Chart II is completed. Break yarn.  
**Next row:** (RS). Miss first 15 sc. Join B with sl st to next sc. Ch 1. 1 sc in same sp as last sl st. Work 19th row of Chart II across next 14 sts. Cont in Chart II to end of chart. Fasten off.

With A and RS facing, crochet sides tog to form a cube, leaving one side open for stuffing. Stuff Block into cube shape. Crochet opening closed.

**SMALL STRIPEY BLOCKS**

With C, ch 10. With MC, ch 11. With D, ch 13.  
**1st row:** (RS). With D, 1 sc in 2nd ch from hook. 1 sc in each of next 10 ch. With MC, 1 sc in each of next 11 ch. With C, 1 sc in each of next 11 ch. Ch 1. Turn. 33 sc.  
**2nd row:** With C, 1 sc in each of next 11 sc. With MC, 1 sc in each of next 11 sc. With D, 1 sc in each of next 11 sc. Ch 1. Turn.  
 Rep last row 10 times more. Fasten off.

Work from \*\* to \*\* as given for Small Graphic Blocks.

With MC and RS facing, crochet sides tog to form a cube, leaving one side open for stuffing. Stuff Block into a cube shape. Crochet opening closed.

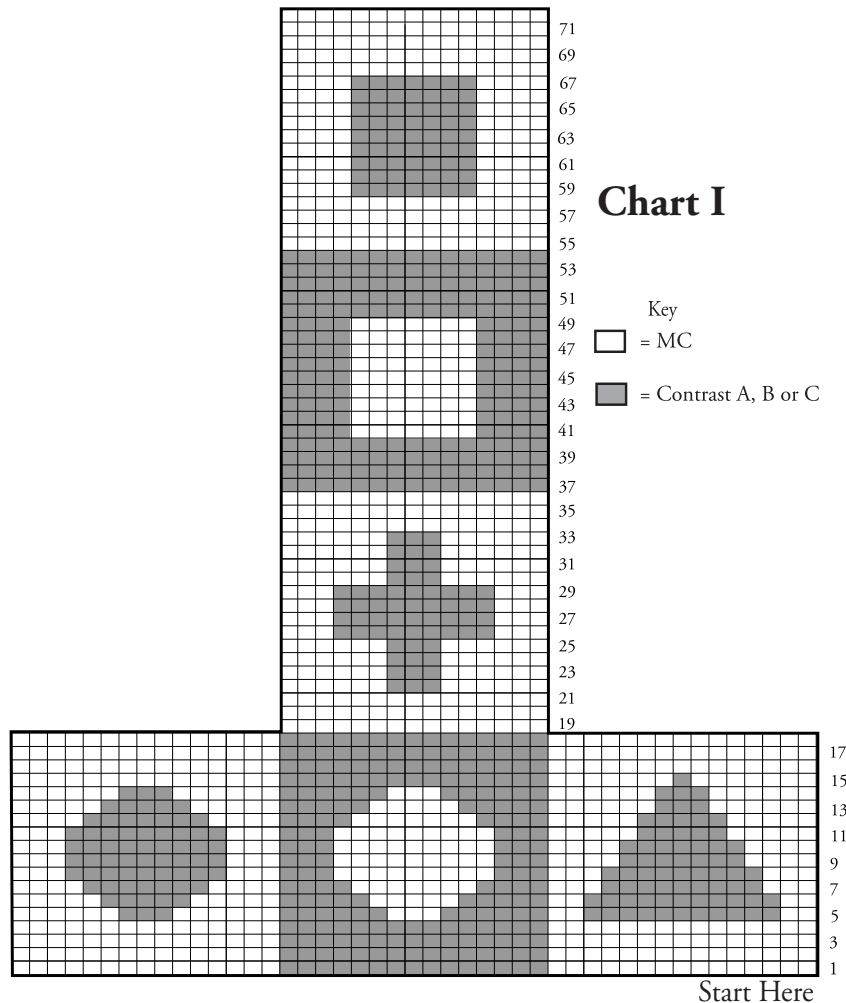
**LARGE FLOWER BLOCKS**

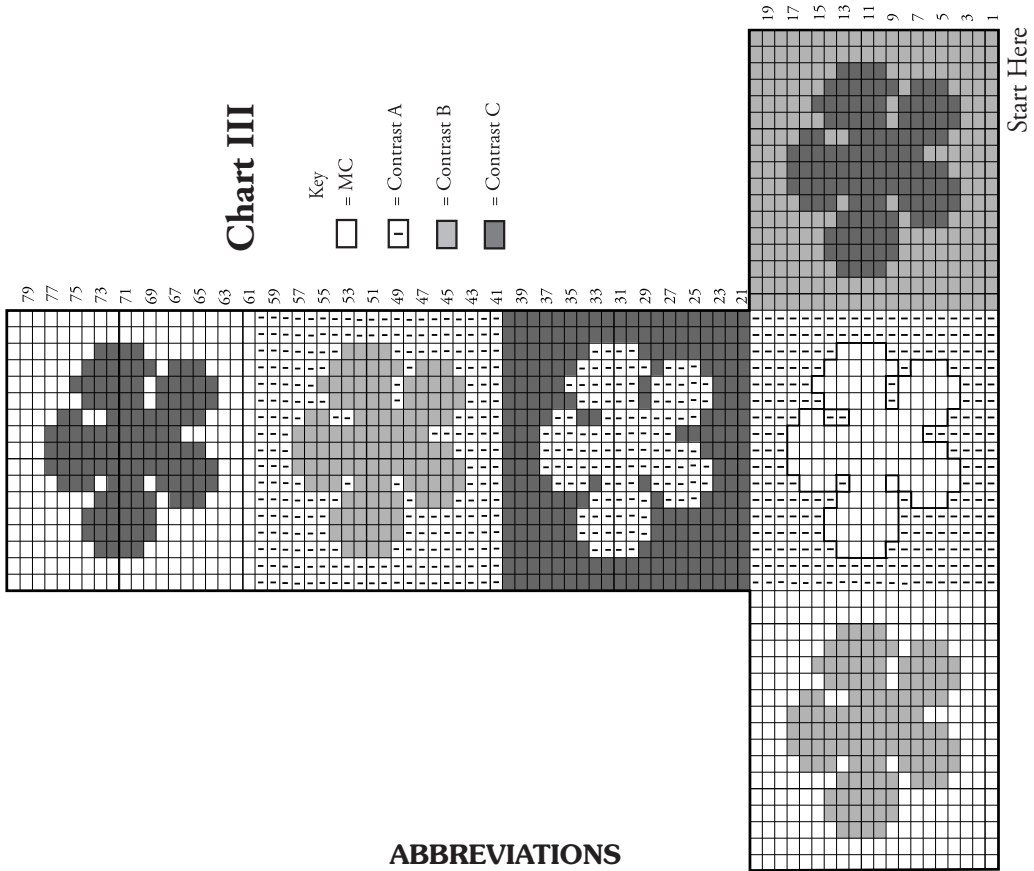
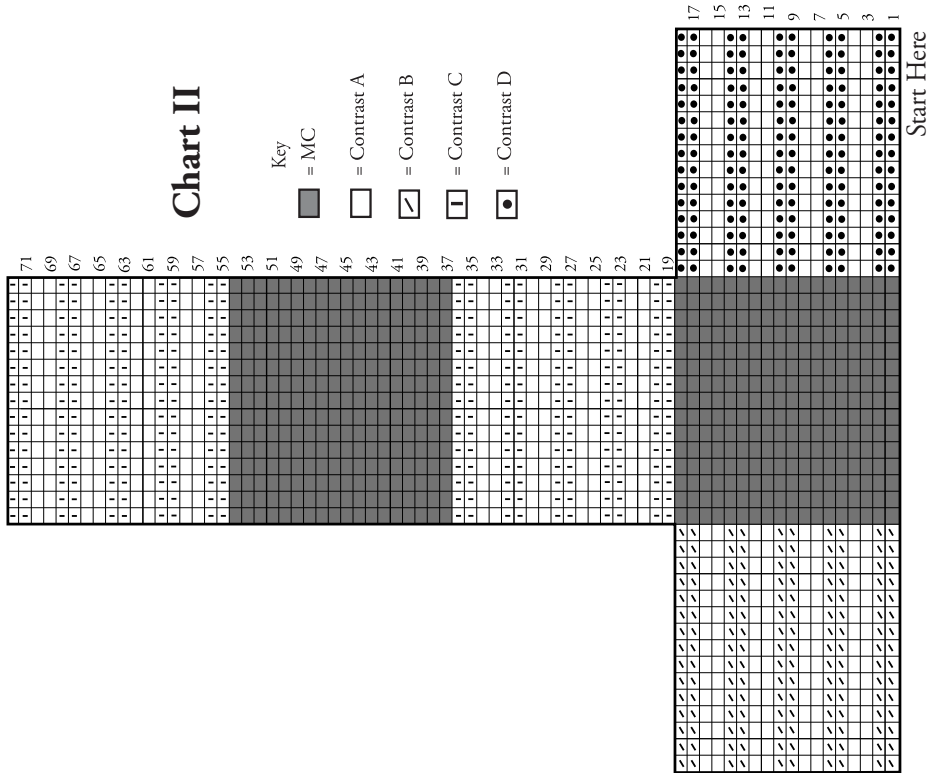
With MC, ch 16. With A, ch 17. With B, ch 18.  
**1st row:** (RS). With B, 1 sc in 2nd ch from hook. 1 sc in each of next 16 ch. With A, 1 sc in each of next 17 ch. With MC, 1 sc in each of next 17 ch. Ch 1. Turn. 51 sc.  
 1st row of Chart III is completed.  
 Cont in Chart III, reading **RS** rows from **right** to left and **WS** rows from **left** to right, until 20th row of Chart III is completed. Break yarn.  
**Next row:** (RS). Miss first 17 sc. Join C with sl st to next sc. Ch 1. 1 sc in same sp as last sl st. Work 21st row of Chart III across next 16 sts. Cont in Chart III to end of chart. Fasten off.

With contrast color and RS facing crochet sides tog to form a cube, leaving one side open for stuffing. Stuff Block into cube shape. Crochet opening closed.

**SMALL FLOWER BLOCKS**

Work as given for Small Stripey Blocks, substituting B for C, A for D and C for B.





**ABBREVIATIONS**  
[www.sugarcream.com/glossary](http://www.sugarcream.com/glossary)

