



KNIT | SKILL LEVEL: INTERMEDIATE

ABBREVIATIONS

Approx = Approximately

Beg = Begin(ning)

K = Knit

P = Purl

Pat = Pattern

Rep = Repeat

RS = Right side

Sl1Pwyib = Slip next stitch purlwise with yarn in back of work.

Sl1Pwyif = Slip next stitch purlwise with yarn in front of work.

St(s) = Stitch(es)

Tog = Together

WS = Wrong side

Yo = Yarn over

MEASUREMENTS

Approx 24" x 75" [61 x 190.5 cm].

GAUGE

15 sts and 19 rows = 4" [10 cm] in stocking stitch.

INSTRUCTIONS

Note: Carry color not in use loosely up side of work.

With B, cast on 87 sts (multiple of 6 sts + 3). See chart on page 2. **Do not** join. Working back and forth across needle in rows, proceed as follows:

Knit 2 rows (garter st).

Beg pat as follows:

Set-up row: (WS). With B, K1. Sl1Pwyif. *K2. K1, wrapping yarn around needle 5 times. K2. Sl1Pwyif. Rep from * to last st. K1.

1st row: (RS). With A, K1. *K3. Sl1Pwyib, dropping extra yarn wraps. K2. Rep from * to last 2 sts. K2.

2nd and 4th rows: With A, P2. *P2. Sl1Pwyib. P3. Rep from * to last st. P1.

3rd and 5th rows: With A, K1. *K3. Sl1Pwyib. K2. Rep from * to last 2 sts. K2.

MATERIALS

Patons® Lincoln Fog™ (3.5 oz/100 g; 190 yds/174 m)

Contrast A Limestone (12004)

4 balls

Contrast B Charcoal (12009)

2 balls

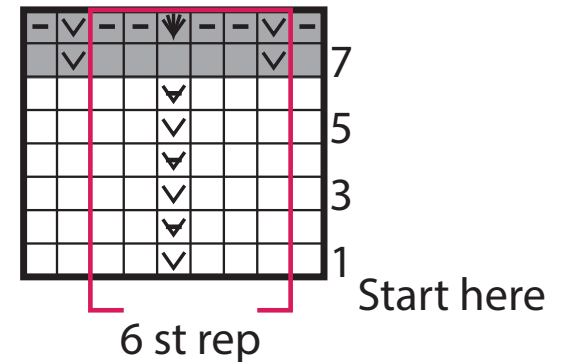
Size U.S. 9 (5.5 mm) circular knitting needle 24" [61 cm] long **or size needed to obtain gauge.**

6th row: With A, as 2nd row.
7th row: With B, K1. *Sl1Pwyib. K5. Rep from * to last 2 sts. Sl1Pwyb. K1.
8th row: With B, K1. Sl1Pwyif. *K2. K1, wrapping yarn around needle 5 times. K2. Sl1Pwyif. Rep from * to last st. K1.
 Rep these 8 rows for Windowpane Pat until work from beg measures approx 69½" [176.5 cm], ending on a 7th row.
 With B, knit 3 rows. Cast off.

Side edging: (RS). With B, pick up and knit 262 sts evenly across right edge of Scarf as follows:
1st row: Pick up and knit 1 st. *yo. Pick up and knit 1 st. Pass yo over last st. Rep from * across side edge. Cast off.
 Rep for left edging.



CHART



- Key
- = With A, Knit on RS rows, Purl on WS rows
 - ∇ = With A, Sl1Pwyib on RS rows
 - ∇ = With A, Sl1Pwyib on WS rows
 - = With B, Knit on RS rows, Purl on WS rows
 - = With B, Knit on WS rows, Purl on RS rows
 - ∇ = With B, Sl1Pwyib on RS rows, Sl1Pwyif on WS rows
 - ∇ = With B, Knit, wrapping yarn around needle 5 times