



## What you will need:

**AUNT LYDIA'S® Classic Crochet Thread, Size 10:** 1 ball each of 451 Parakeet **A**, 431 Pumpkin **B**, 332 Hot Pink **C**, and 421 Goldenrod **D**.

**Susan Bates® Crochet Hook:**  
1.40mm [US 8]

**GAUGE:** 2 “ripples” = 4” (10 cm) measured from peak to peak; 19 rows = 4” (10 cm) in ripple pattern. **CHECK YOUR GAUGE.** Use any size hook to obtain the gauge given.

**AUNT LYDIA'S® Classic Crochet Thread, Size 10,** Art. 154 available in white & ecru 400 yd; solid color 250 yd; shaded color 300 yd balls

# Colorful Ripple Cowl

*Cotton crochet thread is the perfect choice for a warm weather cowl! We've shown bright playful colors that are fun for spicing up your look, but crochet thread is available in many soft and neutral shades if you prefer.*

*Also photographed is Biba Style Beanie*

**Cowl measures 60” (152.5 cm) around and 7” (18) cm tall.**

## Special Stitch

**dc5tog (double crochet 5 stitches together)** = [Yarn over, insert hook in next stitch, yarn over and pull up loop, yarn over, draw through 2 loops] 5 times, yarn over, draw through all 6 loops on hook.

## Notes

1. Cowl is worked in joined rounds with right side always facing. Do not turn at the beginning of rounds.
2. The cowl is worked in a lacy ripple pattern of 5-dc “peaks” and dc5tog “valleys”. The peaks of each row are worked into the center dc of the 5-dc peaks of the previous row, and the valleys are worked centered over the dc5tog valleys of the previous row.
3. The Cowl can be worked by reading the written instructions or stitch diagram.

## COWL

With **A**, ch 480. Being careful not to twist chain, join with slip st in first ch.

**Round 1 (right side):** Ch 3 (counts as first dc here and throughout), 2 dc in same ch as joining, [ch 1, skip next ch, dc in next ch] twice, ch 1, skip next ch, dc5tog, \*[ch 1, skip next ch, dc in next ch] twice, ch 1, skip next ch, 5 dc in next ch, [ch 1, skip next ch, dc in next ch] twice, ch 1, skip next ch, dc5tog; repeat from \* around to last 5 ch, [ch 1, skip next ch, dc in next ch] twice, ch 1, skip last ch, 2 dc in same ch as joining; join with slip st in top of beginning ch-3—30 “ripples”.

**Round 2:** Ch 1, sc in same st as joining and in each dc and ch around; join with slip st in first sc. Fasten off **A**.

**Round 3:** With right side facing, draw up a loop of **B** in first sc, ch 3 (counts as dc), 2 dc in same st as joining, [ch 1, skip next ch, dc in next ch] twice, ch 1, skip next ch, dc5tog, \*[ch 1, skip next ch, dc in next ch] twice, ch 1, skip next ch, 5 dc in next ch, [ch 1, skip next ch, dc in next ch] twice, ch 1, skip next ch, dc5tog; repeat from \* around to last 5 ch, [ch 1, skip next ch, dc in next ch] twice, ch 1, skip last ch, 2 dc in same st as joining; join with slip st in top of beginning ch-3.

**Round 4:** With **B**, repeat Round 2.

Fasten off **B**.

Repeat Rounds 3 and 4 working 2 rounds each in the following color sequence: **C, D, A, \*B, C, D, and A**; repeat from \* until piece measures about 7” (18 cm) from beginning. Fasten off **A**.

## Edging

With right side of Cowl facing and working across the opposite side of the foundation ch, join **B** with slip st in the ch at base of first 5-dc group, ch 1 sc in each ch around; join with slip st in first sc. Fasten off.

## FINISHING

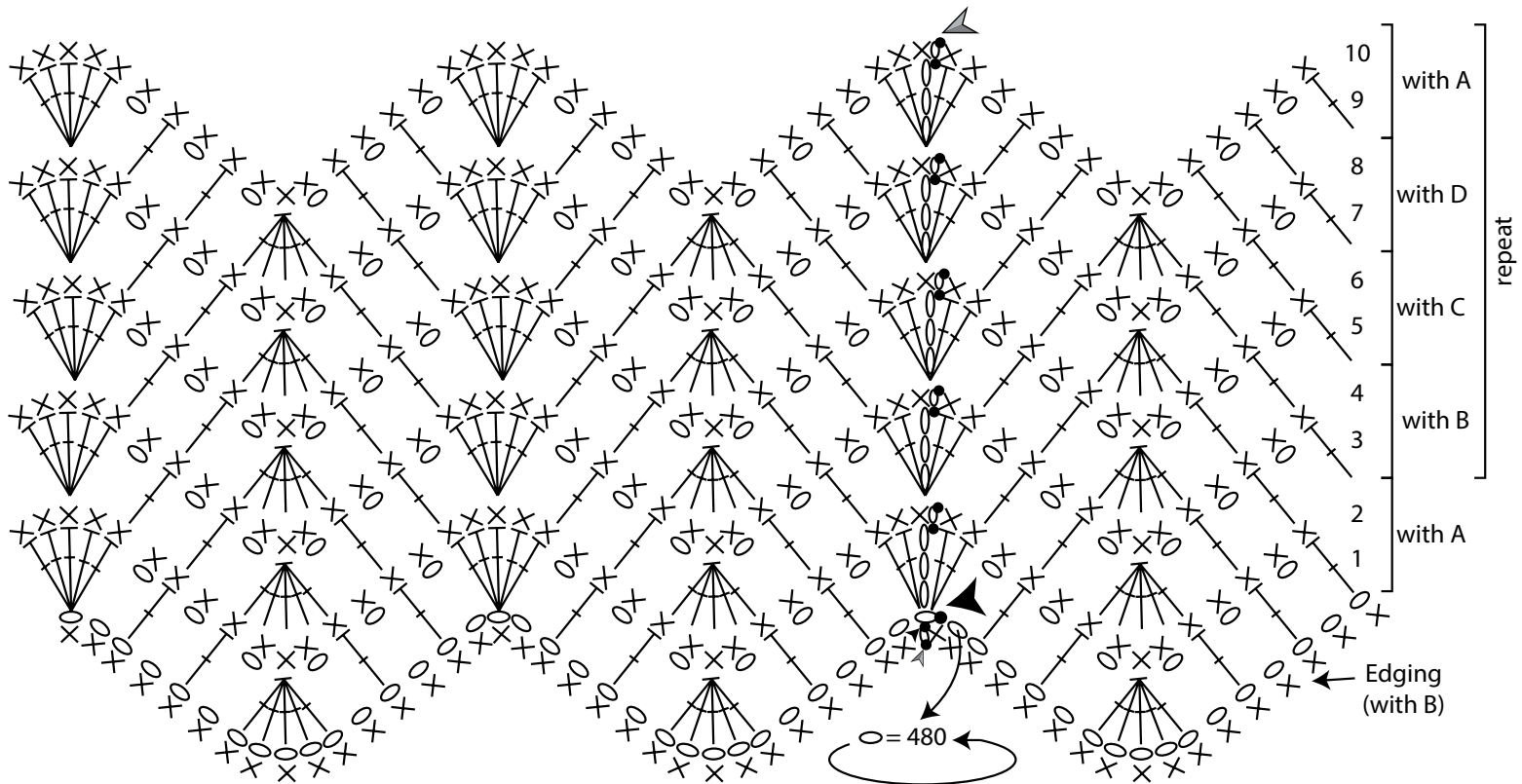
Weave in ends.

## ABBREVIATIONS

**A, B, C**, etc. = Color A, Color B, Color C, etc.; **ch** = chain; **dc** = double crochet; **sc** = single crochet; **st(s)** = stitch(es); [ ] = work directions in brackets the number of times specified; \* = repeat whatever follows the \* as indicated.

*See next page for stitch diagram*

SHOP KIT



**KEY**

- begin
- end
- slip stitch (slip st)
- chain (ch)
- single crochet (sc)
- double crochet (dc)

**COLOR KEY**

- A = 451 Parakeet
- B = 431 Pumpkin
- C = 332 Hot Pink
- D = 421 Goldenrod