



**PATONS® BEEHIVE BABY SPORT™
POMPOMS AND RIPPLES BLANKET
(TO CROCHET)**

MEASUREMENTS

Approx 32" x 38" [81.5 x 96.5 cm], excluding edging.

MATERIALS

Patons® Beehive Baby Sport™
(100 g/3.5 oz; 328 m/359 yds)

Main Color (MC) Baby Grey (09045) **4 balls**

Contrast A Violet Mist (09309) **1 ball**

Contrast B Bonnet Blue (09143) **1 ball**

Size 4 mm (U.S. G or 6) crochet hook **or size needed to obtain tension.**

TENSION

19 sc and 21 rows = 4" [10 cm].

STITCH GLOSSARY

www.patonsyarns.com/abbreviations

Approx =	RS = Right side
Approximately	Sc = Single crochet
Ch(s) = Chain(s)	Sl st = Slip stitch
Pat = Pattern	Sp(s) = Space(s)
Rem = Remaining	St(s) = Stitch(es)
Rep = Repeat	WS = Wrong side

INSTRUCTIONS

Stripe Pat

With MC, work 9 rows.

With A, work 1 row.

With B, work 1 row.

With A, work 1 row.

With MC, work 3 rows.

With A, work 1 row.

With B, work 1 row.

With A, work 1 row.

These 18 rows form Stripe Pat.

With MC, ch 244. Mark every 50th ch for easier counting.

1st row: (RS). 2 sc in 2nd ch from hook. (Ch 1. Miss next ch. 1 sc in next ch) twice. Miss next 2 ch. (1 sc in next ch. Ch 1. Miss next ch) twice. *3 sc in next ch. (Ch 1. Miss next ch. 1 sc in next ch) twice. Miss next 2 ch. (1 sc in next ch. Ch 1. Miss next ch) twice. Rep from * to last ch. 2 sc in last ch. Turn.

2nd to 9th rows: Ch 1. 2 sc in first sc. (Ch 1. 1 sc in next ch-1 sp) twice. Miss next 2 sc. (1 sc in next ch-1 sp. Ch 1) twice. *Miss next sc. 3 sc in next sc. (Ch 1. 1 sc in next ch-1 sp) twice. Miss next 2 sc. (1 sc in next ch-1 sp. Ch 1) twice. Rep from * to last 2 sc. Miss next sc. 2 sc in last sc. Join A at end of 9th row. Break MC. First 9 rows of Stripe Pat are complete.

Following Stripe Pat, rep 2nd row until work from beg measures approx 38" [96.5 cm] ending with 9 rows of MC. Fasten off.

Edging

With RS facing, join MC with sl st at top right corner.

1st row: Ch 1. Work 171 sc evenly down edge. Turn.

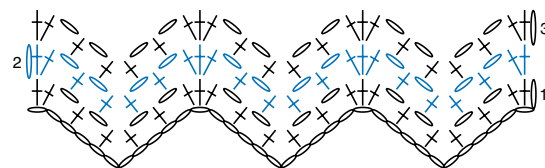
2nd to 5th rows: Ch 1. 1 sc in each sc across. Turn. Fasten off after 5th row.

6th row: (WS). Join B with sl st to 5th sc. Ch 1. 1 sc in same sp as last sl st. *Ch 17. Miss next 17 sc. 1 sc in next sc. Rep from * 8 times more.

Turn. Leave rem sts unworked.

7th row: Ch 1. 1 sc in first sc. *25 sc in next ch-17 sp. Miss next sc. Rep from * 7 times more. 25 sc in next ch-17 sp. 1 sc in last sc. Fasten off.

Rep for opposite side.



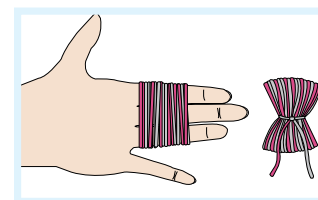
REDUCED SAMPLE OF PATTERN

KEY

- = chain (ch)
- + = single crochet (sc)

FINISHING

Pompoms (make 18): Wind A around 3 fingers approx 80 times. Remove from fingers and tie tightly in center. Cut through each side of loops. Trim to a smooth round shape. Attach to Edging as shown in picture.



Patons®

Beehive Baby Sport™

...a part of your life.

P.O. Box 40, Listowel ON N4W 3H3

www.patonsyarns.com

POM-POMS AND RIPPLES BLANKET

1 of 1

