



 **KNIT | SKILL LEVEL: INTERMEDIATE**

ABBREVIATIONS

Alt = Alternate(ing)

Beg = Beginning

Cont = Continue(ity)

Inc = Increase(ing)

K = Knit

Kfb = Increase 1 stitch by knitting into front and back of next stitch

K2tog = Knit next 2 stitches together

P = Purl

PM = Place marker

Rem = Remain(ing)

Rep = Repeat

Rnd(s) = Round(s)

RS = Right side

Ssk = Slip next 2 stitches knitwise one at a time. Pass them back onto left-hand needle, then knit through back loops together

St(s) = Stitch(es)

WS = Wrong side

MATERIALS

Bernat® Super Value™ (7 oz/197 g; 426 yds/389 m)

Sizes	S	M	L	
Main Color (MC) Clay (53041)	1	1	1	ball
Contrast A Aqua (53201)	1	1	1	ball
Contrast B Winter White (07407)	1	1	1	ball

Size U.S. 8 (5 mm) knitting needles. Size U.S. 6 (4 mm) circular knitting needle 36" [91.5 cm] long. Set of four size U.S. 6 (4 mm) double-pointed knitting needles **or size needed to obtain gauge**. Stitch holder. Stitch markers. **4 (5-5) buttons**.

SIZES

To fit chest measurement

S 10" [25.5 cm]

M 14" [35.5 cm]

L 17" [43 cm]

Finished chest

S 12" [30.5 cm]

M 16½" [42 cm]

L 19" [48 cm]

GAUGE

18 sts and 24 rows = 4" [10 cm] with larger needles in stocking st.

INSTRUCTIONS

The instructions are written for smallest size. If changes are necessary for larger sizes the instructions will be written thus (). When only one number is given, it applies to all sizes. For ease in working, circle all numbers pertaining to your size.

Note: When working from chart, carry yarn not in use loosely across WS of work, but never over more than 3 sts. When it must pass over more than 3 sts, weave it over and under color in use on

next st or at center point of sts it passes over. The colors are never twisted around one another.

Beg at neck edge, with larger pair of needles and A, cast on **42 (46-58)** sts.

1st row: (RS). K2. *P2. K2. Rep from * to end of row.

2nd row: P2. *K2. P2. Rep from * to end of row.

Rep last 2 rows of (K2. P2) ribbing twice more.

Work 2 rows in stocking st, inc **2 (4-4)** sts evenly across last row. **44 (50-62)** sts.

Work Chart **I (II-II)** in stocking st, reading **knit** rows from **right to left** and **purl** rows from **left to right**, noting 8-st rep will be worked **4 (5-5)** times and noting side incs on 3rd row and following **2 (10-8)** rows. **50 (72-80)** sts. Charts are shown on page 3.

Inc 1 st at each end on following alt row(s) **2 (1-3)** time(s) more. **54 (74-86)** sts.

Work **1 (0-0)** row(s) even.

Leg Openings: Keeping cont of Chart **I (II-II)**, proceed as follows:

Next row: (RS). (Kfb) **0 (1-1)** time. **K5 (8-9)**. Cast off **4 (6-6)** sts. **K36 (44-54)** (including st on needle after cast off). Cast off **4 (6-6)** sts. Knit to last **0 (1-1)** st. (Kfb) **0 (1-1)** time.

Note: All Leg sections are worked at the same time using separate balls of yarn for each section. Beg with a purl row, work even from chart until Row **16 (24-26)** of chart is complete.

Joining row: (RS). **K5 (10-11)**. Cast on **4 (6-6)** sts. **K36 (44-54)**. Cast on **4 (6-6)** sts. Knit to end of row. **54 (76-88)** sts.

Work **2 (1-0)** row(s) even from chart. Break A and B.

With MC only, cont even in stocking st for **11 (14-22)** rows more, ending on a purl row. PM at each end of last row.

Back shaping: Cast off **6 (11-12)** sts at beg of next 2 rows. **42 (54-64)** sts.

Next row: (RS). K1. ssk. Knit to last 3 sts. K2tog. K1.

Next row: Purl.

Rep last 2 rows **9 (8-10)** times more. **22 (36-42)** sts.

Sizes M and L only: Next row: (RS). Knit.

Next row: Purl.

Next row: K1. ssk. Knit to last 3 sts. K2tog. K1.

Next row: Purl.

Rep last 4 rows (**1-2**) time(s) more. (**32-36**) sts.

All sizes: Work **2 (2-0)** rows even. Leave rem **22 (32-36)** sts on a st holder.

FINISHING

Back edging: (RS). With circular needle and MC, pick up and knit **26 (41-55)** sts along body from marker to back. **K22 (32-36)** from Back st holder. Pick up and knit **26 (41-55)** sts along opposite side of body to marker. **74 (114-146)** sts.

Do not join. Working back and forth across needle, work 6 rows in (K2. P2) ribbing as given for neckband. Cast off in ribbing.

Button band: With RS facing, smaller circular needle and MC, pick up and knit **29 (37-47)** sts along left side edge (belly) between neck edge and cast off edge of back edging. Knit 6 rows. Cast off knitwise (WS).

Buttonhole band: With RS facing, smaller circular needle and MC, pick up and knit **29 (37-47)** sts along right side edge (belly) between cast off edge of back edging and neck edge.

Knit 3 rows.

Next row: **K2 (3-4)**. *Cast off 3 sts. **K4 (4-6)**. Rep from * **2 (3-3)** times more. Cast off 3 sts. **K3 (3-4)**.

Next row: Knit, casting on 3 sts over cast off sts.

Knit 1 row. Cast off knitwise (WS).

Leg edging: (RS). With double-pointed needles and MC, pick up and knit **24 (28-32)** sts evenly around leg opening. Divide sts on 3 needles. Join in rnd, PM on first st.

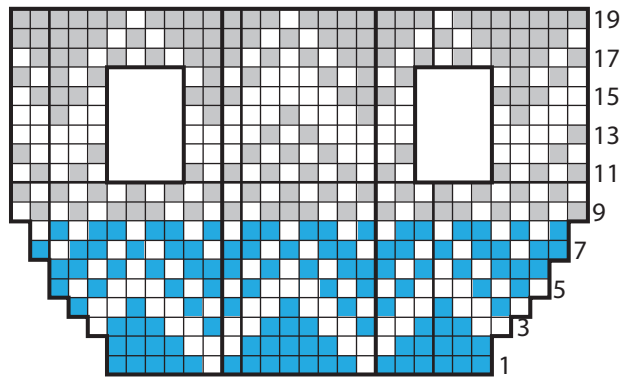
1st rnd: *K2. P2. Rep from * around.

Rep last rnd 5 times more. Cast off in ribbing.

Sew buttons onto button band to correspond with buttonholes.

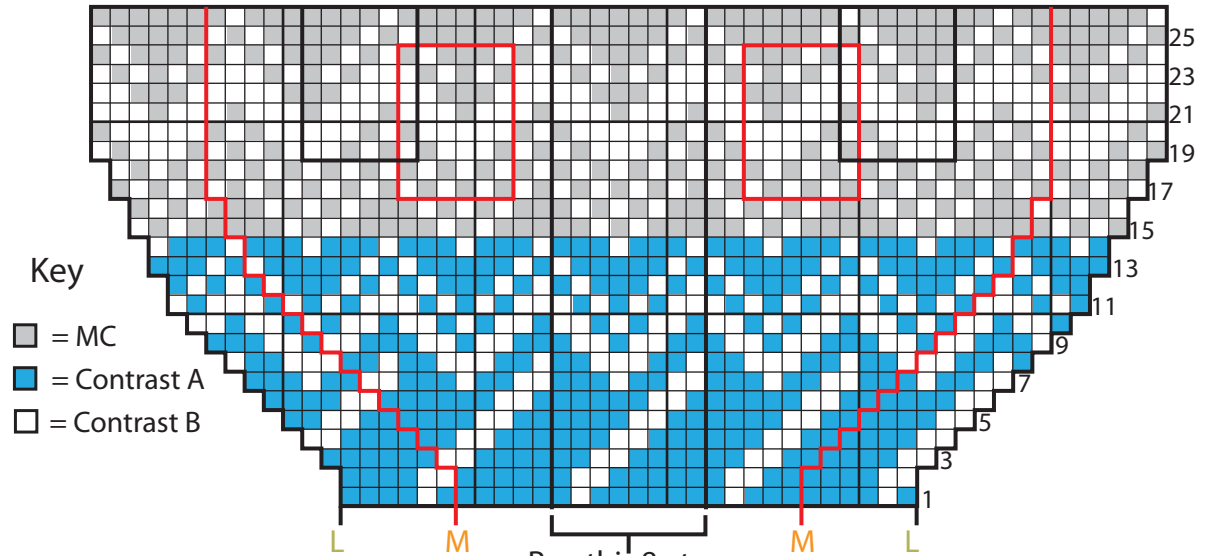


Chart I
Size **S**



Rep this 8-st rep
4 times

Chart II
Sizes **M** and **L**



Key

- = MC
- = Contrast A
- = Contrast B

Rep this 8-st rep
5 times