



MATERIALS

Patons® Classic Wool Worsted™ (3.5 oz/100 g; 210 yds/192 m)

Sizes	XS/S	M	L	XL	2/3XL	4/5XL	
Gray Mix (00224)	6	7	8	9	11	12	balls

Sizes U.S. 6 (4 mm) and U.S. 8 (5 mm) knitting needles **or size needed to obtain gauge.** Cable needle. 2 st holders. Stitch markers.

ABBREVIATIONS: yarnspirations.com/abbreviations

Approx = Approximate(ly)

Beg = Begin(ning)

C3BK = Slip next stitch onto cable needle and leave at back of work. K2, then K1 from cable needle.

C3FK = Slip next 2 stitches onto cable needle and leave at front of work. K1, then K2 from cable needle.

C3BP = Slip next stitch onto cable needle and leave at back of work. K2, then P1 from cable needle.

C3FP = Slip next 2 stitches onto cable needle and leave at front of work. P1, then K2 from cable needle.

Cr5B = Slip next 3 stitches onto cable needle and leave at back of work. K2, then K1 (last st on cable needle), then K2 (rem 2 sts on cable needle).

Cr7B = Slip next 4 stitches onto cable needle and leave at back of work. K3, then P1 (last st on cable needle), then K3 (rem 3 sts on cable needle).

Cr7F = Slip next 4 stitches onto cable needle and leave at front of work. K3, then P1 (last st on cable needle), then K3 (rem 3 sts on cable needle).

Cont = Continue(ity)

Dec = Decrease(ing)

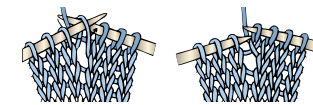
Inc = Increase(ing)

K = Knit

K1tbl = Knit into next stitch through back of loop

K2tog = Knit next 2 stitches together

M1 = Make 1 stitch by picking up horizontal loop lying before next stitch and knitting into back of loop



P = Purl

Pat = Pattern

Psso = Pass slipped stitch over

Rem = Remain(ing)

Rep = Repeat

RS = Right side

Sl1 = Slip next stitch knitwise

St(s) = Stitch(es)

WS = Wrong side

Yo = Yarn over



INTERMEDIATE

SIZES: To fit bust measurement

X-Small/Small 28-34" [71-86.5 cm]

Medium 36-38" [91.5-96.5 cm]

Large 40-42" [101.5-106.5 cm]

X-Large 44-46" [112-117 cm]

2/3 X-Large 48-54" [122-137 cm]

4/5 X-Large 56-62" [142-157.5 cm]

Finished bust

X-Small/Small 39" [99 cm]

Medium 42" [101.5 cm]

Large 46" [117 cm]

X-Large 49" [124.5 cm]

2/3 X-Large 57" [145 cm]

4/5 X-Large 64" [162.5 cm]

GAUGE: 19 sts and 25 rows = 4" [10 cm] in stocking st with larger needles.

**INSTRUCTIONS**

The instructions are written for smallest size. If changes are necessary for larger sizes the instructions will be written thus (). Numbers for each size are shown in the same color throughout the pattern. When only one number is given in black, it applies to all sizes.

Note: See Charts for all Cable Panels on page 5.

Cable Panel A (worked over 7 sts)

1st row: (RS). P1. Cr5B. P1.

2nd row: K1. P5. K1.

3rd row: C3BK. K1. C3FK.

4th row: P7.

5th row: K2. yo. Sl1. K2tog. pssso. yo. K2.

6th row: P7.

7th to 14th rows: Rep 5th and 6th rows 4 times more.

15th row: C3FP. K1. C3BP.

16th row: K1. P5. K1.

These 16 rows form Cable Panel A.

Cable Panel B (worked over 7 sts)

1st row: (RS). K2. yo. Sl1. K2tog. pssso. yo. K2.

2nd row: P7.

3rd to 6th rows: Rep 1st and 2nd rows twice more.

7th row: C3FP. K1. C3BP.

8th row: K1. P5. K1.

9th row: P1. Cr5B. P1.

10th row: As 8th row.

11th row: C3BK. K1. C3FK.

12th row: P7.

13th row: As 1st row.

14th and 15th rows: As 12th and 13th rows.

16th row: P7.

These 16 rows form Cable Panel B.

Cable Panel C (worked over 23 sts)

1st row: (RS). (K3. P1) 5 times. K3.

2nd and all WS rows: (P3. K1) 5 times. P3.

3rd row: As 1st row.

5th row: (K3. P1) twice. Cr7B. (P1. K3) twice.

7th row: As 1st row.

9th row: K3. P1. (Cr7F. P1) twice. K3.

11th row: As 1st row.

13th row: (Cr7B. P1) twice. Cr7B.

15th row: As 1st row.

17th row: As 9th row.

19th row: As 1st row.

21st row: As 5th row.

23rd and 25th rows: As 1st row.

27th row: As 5th row.

28th row: As 2nd row.

These 28 rows form Cable Panel C.

FRONT

With smaller needles cast on **98 (102-110-118-142-158) sts.

1st row: (RS). *K2. P2. Rep from * to last 2 sts. K2.

2nd row: *P2. K2. Rep from * to last 2 sts. P2.

Rep last 2 rows (K2. P2) ribbing for 3" [7.5 cm], ending on a 2nd row and inc **1 (3-7-5-5-7)** st(s) evenly across last row. **99 (105-117-123-147-165)** sts.

Change to larger needles.

Next 2 rows: Knit.

Proceed in Box St Pat as follows:

1st row: (RS). *P3. K3. Rep from * to last 3 sts. P3.

2nd row: *K3. P3. Rep from * to last 3 sts. K3.

3rd row: As 1st row.

4th row: Purl.

5th row: *K3. P3. Rep from * to last 3 sts. K3.

6th row: *P3. K3. Rep from * to last 3 sts. P3.

7th row: As 5th row.

8th row: Purl.

These 8 rows form Box St Pat.

Cont in pat until work from beg measures approx **11 (11-11½-12-12 12½)" [28 (28-29-30.5-30.5-32)** cm], ending on a 4th or 8th row of pat.

Next 2 rows: Knit.

Next row: (RS). **K20 (10-8-9-3-22)**. *M1. **K4 (4-4-3-3-2)**. Rep from * to last **19 (11-9-9-3-21)** sts. **M1. K19(11-9-9-3-21). 115(127-143-159-195-227)** sts.

Next row: (WS). **K19 (25-33-41-59-75)**. P7. K3. P5. K3. P7. K2. (P3. K1) 5 times. P3. K2. P7. K3. P5. K3. P7. **K19 (25-33-41-59-75)**.

Proceed in pat as follows:

1st row: (RS). (P1. K1tbl) **8 (11-15-19-28-36)** times. P3. Work 1st row Cable Panel B over 7 sts. P2. Work 1st row Cable Panel A over 7 sts. P2. Work 1st row Cable Panel B over 7 sts. P2. Work 1st row Cable Panel C over 23 sts. P2. Work 1st row Cable Panel B over 7 sts. P2. Work 1st row Cable Panel A over 7 sts. P2. Work 1st row Cable Panel B over 7 sts. P3. (K1tbl. P1) **8 (11-15-19-28-36)** times.



2nd row: K19 (25-33-41-59-75). Work 2nd row Cable Panel B over 7 sts. K2. Work 2nd row Cable Panel A over 7 sts. K2. Work 2nd row Cable Panel B over 7 sts. K2. Work 2nd row Cable Panel C over 23 sts. K2. Work 2nd row Cable Panel B over 7 sts. K2. Work 2nd row Cable Panel A over 7 sts. K2. Work 2nd row Cable Panel B over 7 sts. K19 (25-33-41-59-75). These 2 rows form side texture pat. Cable Panel pats are now in position.

Cont in pat until work from beg measures 15" [38 cm], ending on a WS row.

Shape armholes: Keeping cont of pat, cast off 10 (14-16-18-20-24) sts at beg of next 2 rows. 95 (99-111-123-155-179) sts.**
Cont even in pat until work from beg measures approx 20 (20-20½-21-21-21½)" [51(51-52-53.5-53.5-54.5) cm], ending on a 24th row of Cable Panel C.

Shape neck: Next row: (RS). Pat across 33 (35-40-46-61-73) sts (neck edge). **Turn.** Leave rem sts on a spare needle.

Dec 1 st at neck edge on next 8 rows, then on RS rows only 3 times more. 22 (24-29-35-50-62) sts rem. Cont even in pat until armhole measures 8 (8-8½-9-9-9½)" [20.5 (20.5-21.5-23-23-24) cm], ending on a WS row.

Shape shoulder: Keeping cont of pat, cast off 11 (12-14-17-25-31) sts at beg of next row. Work 1 row even in pat. Cast off rem 11 (12-15-18-25-31) sts.

With RS facing, slip next 29 (29-31-31-33-33) sts onto a st holder. Join yarn to rem sts and pat to end of row.

Dec 1 st at neck edge on next 8 rows, then on RS rows only 3 times more. 22 (24-29-35-50-62) sts rem. Cont even in pat until armhole measures 8 (8-8½-9-9-9½)" [20.5 (20.5-21.5-23-23-24) cm], ending on a RS row.

Shape shoulder: Keeping cont of pat, cast off 11 (12-14-17-25-31) sts at beg of next row. Work 1 row even in pat. Cast off rem 11 (12-15-18-25-31) sts.

BACK

Work from ** to ** as given for Front. Cont even in pat until armholes measure same length as Front, ending on a WS row.

Shape shoulders: Keeping cont of pat, cast off 11 (12-14-17-25-31) sts at beg of next 2 rows, then 11 (12-15-18-25-31) sts at beg of following 2 rows. Leave rem 51 (51-53-53-55-55) sts on a st holder.

SLEEVES

With smaller needles, cast on 46 (46-50-50-50-54) sts.

Work 7" [18 cm] in (K2. P2) ribbing as given for Front, ending on a 2nd row and inc 5 (5-1-1-1-3) st(s) evenly across last row. 51 (51-51-51-51-57) sts. Place markers on side edges 3½" [9 cm] from cast on edge.

Change to larger needles.

Next 2 rows: Knit.

Proceed in Box St Pat as given for Front for 8 rows.

Inc 1 st each end of needle on next and following 6th rows twice more, taking inc sts into pat. 57 (57-57-57-57-63) sts.

Cont even in pat until work from markers measures approx 8" [20.5 cm], ending on a 4th or 8th row of pat.

Next 2 rows: Knit.

Next row: (RS). K3 (3-5-9-9-5). *M1. K4 (4-3-2-2-3). Rep from * to last 0 (0-4-8-8-4) sts. K0 (0-4-8-8-4). 69 (69-73-77-77-81) sts.

Next row: (WS). K13 (13-15-17-17-19). (P7. K3. P5. K3) twice. P7. K13 (13-15-17-17-19).

Proceed in pat as follows:

1st row: (RS). (P1. K1tbl) 5 (5-6-7-7-8) times. P3. (Work 1st row Cable Panel B over 7 sts. P2. Work 1st row Cable Panel A over 7 sts. P2) twice. Work 1st row Cable Panel B over 7 sts. P3. (K1tbl. P1) 5 (5-6-6-6-8) times.

2nd row: K13 (13-15-17-17-19). (Work 2nd row Cable Panel B over 7 sts. K2. Work 2nd row Cable Panel A over 7 sts. K2) twice. Work 2nd row Cable Panel B over 7 sts. K13 (13-15-17-17-19).

These 2 rows form side texture pat. Cable Panel pats are now in position.



Cont in pat inc 1 st each end of next and following 6th rows until there are **79 (79-83-87-87-91)** sts, taking inc sts into side texture pat. Cont even in pat until work from markers measures 18" [47.5 cm], ending on a WS row.

Shape top: Keeping cont of pat, cast off **8 (8-9-9-9-10)** sts at beg of next 8 rows. Cast off rem **15 (15-11-15-15-11)** sts.

Place markers on side edges of sleeves **12 (16-20-22-26-30)** rows down from first cast off edges.

FINISHING

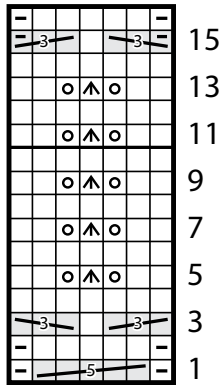
Pin all pieces to measurements. Cover with a damp cloth, leaving cloth to dry.

Neckband: Sew right shoulder seam. With RS facing and smaller needles, pick up and knit 20 sts down left front neck edge. **K29 (29-31-31-33-33)** from Front st holder, dec 6 sts evenly across. Pick up and knit 20 sts up right front neck edge. **K51 (51-53-53-55-55)** from Back st holder, dec 12 sts evenly across. **102 (102-106-106-110-110)** sts. Knit 2 rows.

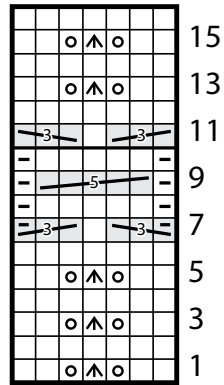
Beg on a 2nd row, work 9 rows in (K2. P2) ribbing as given for Back. Cast off in ribbing. Sew left shoulder and neckband seam.

Sew in sleeves, placing rows above markers along cast off sts of body to form square armholes. Sew side and sleeve seams, reversing cuff seam at markers for cuff turn-back and taking care to match pattern changes at side seams.

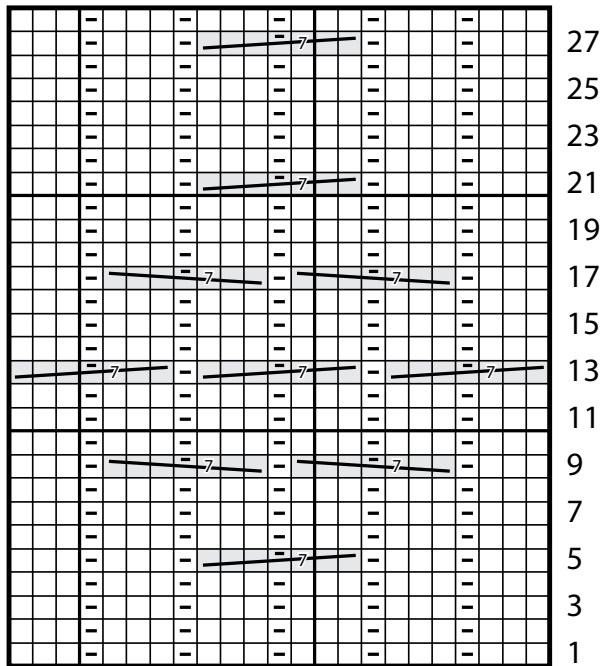




Cable Panel A Start Here



Cable Panel B Start Here



Cable Panel C Start Here

Key

- = Knit on RS rows. Purl on WS rows
- = Purl on RS rows. Knit on WS rows
- = C3BK
- = C3FK
- = C3BP
- = C3FP
- = Cr5B
- = Cr7B
- = Cr7F
- = Sl1. K2tog. pss0
- = yo

