



MATERIALS

Caron® Simply Soft® (Solids: 6 oz/170.1 g; 315 yds/288 m; Heathers and Tweeds: 5 oz/141 g; 250 yds/228 m)

Contrast A Charcoal Heather (H9508) **4 balls**

Contrast B Chartreuse (39771) **3 balls**

Contrast C Grey Heather Tweeds (23002) **3 balls**

Size U.S. H/8 (5 mm) crochet hook **or size needed to obtain gauge.** Stitch markers.

ABBREVIATIONS:

Approx = Approximate(ly)

Beg = Begin(ning)

Ch = Chain(s)

Dc = Double crochet

Dcbp**** = Yoh and draw up a loop around post of next stitch at back of work, inserting hook from right to left. (Yoh and draw through 2 loops on hook) twice.

Dcfp**** = Yoh and draw up a loop around post of next stitch at front of work, inserting hook from right to left. (Yoh and draw through 2 loops on hook) twice

Hdc = Half double crochet

Pat = Pattern

Rem = Remain(ing)

Rep = Repeat

Rnd = Round

RS = Right side

Sc = Single crochet

Sc2tog = Draw up a loop in each of next 2 stitches. Yoh and draw through all 3 loops on hook

Sl st = Slip stitch

Sp(s) = Space(s)

St(s) = Stitch(es)

WS = Wrong side

Yoh = Yarn over hook

 CROCHET | SKILL LEVEL: **EASY**

SIZE

One size fits all.

Finished measurements:

Approx 40" [101.5 cm] wide x 31" [78.5 cm] long from shoulder.

GAUGE

14 sts and 10 rows = 4" [10 cm] in Texture Pat.

INSTRUCTIONS

Note: To change colors, work to last 2 loops on hook of first color then draw new color through rem loops.

BACK

Beg at lower back edge, with A, ch 141.

1st row: (WS). 1 dc in 4th ch from hook (counts as 2 dc). 1 dc in each ch to end of chain. Join B. Turn. 139 sts.

****2nd row:** With B, ch 2 (does not count as st). 1 hdc in first dc. *1 dcbp around next dc. 1 dcbp around next dc. Rep from * to last 2 sts. 1 dcbp around next dc. 1 hdc in last st. Turn.

3rd row: Ch 1. 1 sc in first hdc. *Ch 1. Skip next st. 1 sc in next st. Rep from * to end of row. Join C. Turn.

4th row: With C, ch 1. 1 sc in first sc. *Working around ch-1, 1 hdc in skipped st 2 rows below. 1 sc in next sc. Rep from * to end of row. Turn.

5th row: Ch 3 (counts as dc). 1 dc in each st to end of row. Join A. Turn.

6th and 7th rows: With A, as 2nd and 3rd rows. Join B at end of 7th row.

8th and 9th rows: With B, as 4th and 5th rows. Join C at end of 9th row.

10th and 11th rows: With C, as 2nd and 3rd rows. Join A at end of 11th row.

12th and 13th rows: With A, as 4th and 5th rows. Join B at end of 13th row.**

Rep 2nd to 13th rows for Texture Pat until work from beg measures approx 30" [76 cm], ending on a 2nd, 6th or 10th row of pat.

Shape back neck: Next row: (RS). With appropriate color, pat across 60 sts. Sc2tog (neck edge). **Turn.** Leave rem sts unworked.

Next row: (WS). Work even in pat over rem 61 sts. Fasten off.

With RS facing, skip next 15 sts. Join appropriate color to next st. Ch 1. Work sc2tog over same st as last sl st and next st. Pat to end of row. Turn.

Next row: (WS). Work even in pat over rem 61 sts. Fasten off.

FRONTS (make Left and Right Front alike)

Beg at lower front edge, with A, ch 63.

1st row: (WS). 1 dc in 4th ch from hook (counts as 2 dc). 1 dc in each ch to end of chain. Join B. Turn. 61 sts.

Rep from ** to ** as given for Back. Rep 2nd to 13th rows for Texture Pat until work from beg measures same length as Back to shoulder (ending on same row of pat). Fasten off.

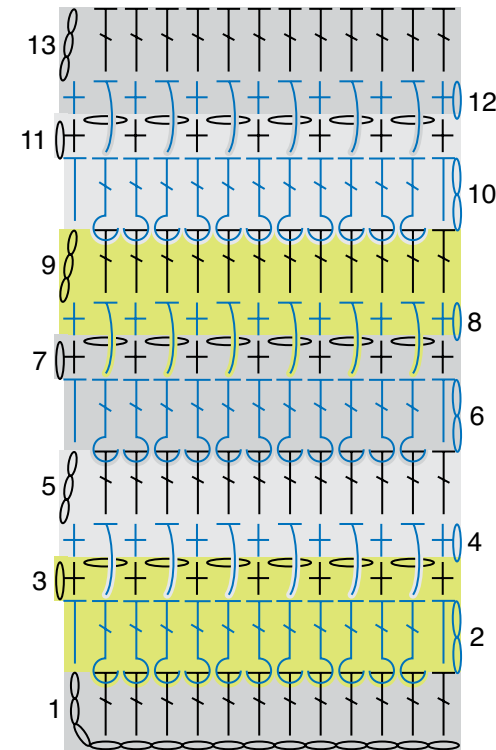
FINISHING

Sew shoulder seams.

Edging: 1st rnd: (RS). Join A with sl st in lower left back edge. Work sc evenly around all outer edges of Ruana, working 3 sc in outer corners (not at neck edge corners). Join with sl st to first sc.

2nd rnd: Ch 1. 1 sc in same sp as last sl st. 1 sc in each sc around, working 3 sc in each corner sc at lower edges (**do not** work extra sc at corners of back neck edge). Join with sl st to first sc.

3rd rnd: Ch 1. Working from left to right, instead of from right to left as usual, work 1 reverse sc in each sc around. Join with sl st to first sc. Fasten off.



REDUCED SAMPLE OF PATTERN

Reverse sc Diagram



STITCH KEY

- = chain (ch)
- = slip stitch (sl st)
- ⊥ = single crochet (sc)
- ⊥ = half double crochet (hdc)
- ⊥ = double crochet (dc)
- ⌋ = back post double crochet (dcbp)
- ⌋ = front post double crochet (dcfp)

- COLOR KEY
- = Contrast A
 - = Contrast B
 - = Contrast C