



MATERIALS

Caron® Simply Soft® (6 oz/170.1 g; 315 yds/288 m)	
Main Color (MC) White (9701)	1 ball
Contrast A Black (9727)	1 ball
Contrast B Red (9729)	1 ball
Contrast C Neon Pink (9775)	1 ball
Contrast D Purple (9781)	1 ball
Contrast E Royal Blue (9767)	1 ball
Contrast F Blue Mint (B9608)	1 ball
Contrast G Super Duper Yellow (B9612)	1 ball
Contrast H Chartreuse (9771)	1 ball

Size U.S. 8 (5 mm) circular knitting needle 36" [91.5 cm] long **or size needed to obtain gauge.**



KNIT | SKILL LEVEL: **EASY**

ABBREVIATIONS

Approx = Approximately

Beg = Beginning

Cont = Continue(ity)

K = Knit

RS = Right side

St(s) = Stitch(es)

Tog = Together

WS = Wrong side

MEASUREMENTS

Approx 44" x 56" [112 x 142 cm]

GAUGE

17 sts and 32 rows = 4" [10 cm] in garter st.

INSTRUCTIONS

Strip One

With MC, cast on 130 sts. **Do not** join. Working back and forth across needle in rows, proceed as follows:

Knit every row (garter st), noting first row is WS. Cont in garter st until work from beg measures 8" [20.5 cm], ending on a WS row.

Break MC. Join G. Cont in garter st until work from beg measures 16" [40.5 cm], ending on a WS row.

Break G. Join F. Cont in garter st until work from beg measures 24" [61 cm], ending on a WS row.

Break F. Join H. Cont in garter st until work from beg measures 32"

[81.5 cm], ending on a WS row.

Break H. Join C. Cont in garter st until work from beg measures 40" [101.5 cm], ending on a WS row.

Break C. Join B. Cont in garter st until work from beg measures 48" [122 cm], ending on a WS row.

Break B. Join E. Cont in garter st until work from beg measures 56" [142 cm], ending on a RS row. Cast off knitwise.

Strip Two

With A, cast on 24 sts.

Knit every row (garter st), noting first row is WS. Cont in garter st until work from beg measures 8" [20.5 cm], ending on a WS row.

Break A. Join E. Cont in garter st until work from beg measures 16" [40.5 cm], ending on a WS row.

Break E. Join B. Cont in garter st until work from beg measures 24" [61 cm], ending on a WS row.

Break B. Join C. Cont in garter st

until work from beg measures 32" [81.5 cm], ending on a WS row.
 Break C. Join H. Cont in garter st until work from beg measures 40" [101.5 cm], ending on a WS row.
 Break H. Join F. Cont in garter st until work from beg measures 48" [122 cm], ending on a WS row.
 Break F. Join G. Cont in garter st until work from beg measures 56" [142 cm], ending on a RS row.
 Cast off knitwise.

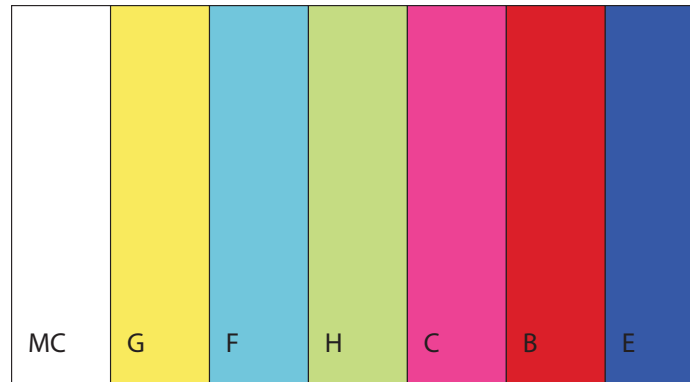
Strip Three

With D, cast on 34 sts.
 Knit every row (garter st), noting first row is WS. Cont in garter st until work from beg measures 11" [28 cm], ending on a WS row.
 Break D. Join MC. Cont in garter st until work from beg measures 18" [45.5 cm], ending on a WS row.
 Break MC. Join D. Cont in garter st until work from beg measures 29" [73.5 cm], ending on a WS row.
 Break D. Join A. Cont in garter st until work from beg measures 56" [142 cm], ending on a RS row.
 Cast off knitwise.

FINISHING

Sew Strips tog as shown in joining diagram.

Strip One



Strip Two



Strip Three



Joining Diagram

