

 **Patons**[®]
Classic Wool

 **Patons**[®]
DECOR



GREEK KEY STRIPED AFGHAN

MEASUREMENT

Approx 47 x 58 ins [119.5 x 147.5 cm]

MATERIALS

Patons Classic Wool (100 g/3.5 oz) or
Patons Decor (100 g/3.5 oz)

Main Color (MC) (Lt Blue)	6	balls
Contrast A (Dk Blue)	3	balls
Contrast B (Grey)	4	balls

Size 4.5 mm (U.S. 7) circular knitting needle 36 ins [90 cm] long **or size needed to obtain tension.**

TENSION

20 sts and 26 rows = 4 ins [10 cm] in stocking st.

INSTRUCTIONS

Note: When working from charts, carry yarn not in use loosely across WS of work but never over more than 5 sts. When it must pass over more than 5 sts, weave it over and under color in use on next st or at centre point of sts it passes over. The colors are never twisted around one another.

With A, cast on 217 sts. **Do not join.** Working back and forth across needle, proceed as follows: Work 9 rows garter st (knit every row) noting that first row is WS and inc 9 sts evenly across last row. 226 sts.

With MC, work 4 rows stocking st, inc 12 sts evenly across last row. 238 sts.

***Work Chart I in stocking st to end of chart reading **knit** rows from **right** to left and **purl** rows from **left** to right noting the 12-st rep will be worked 19 times.

With MC, work 4 rows stocking st, dec 12 sts evenly across first row. 226 sts.

With B, work 4 rows stocking st, inc 12 sts evenly across last row. 238 sts.

Work Chart II in stocking st to end of chart reading **knit** rows from **right** to left and **purl** rows from **left** to right, noting the 19-st rep will be worked 12 times.

With B, work 4 rows stocking st, beg with a purl row and dec 12 sts evenly across first row. 226 sts.

With MC, work 4 rows stocking st, beg with a purl row and inc 12 sts evenly across last row. 238 sts.

Work Chart I in stocking st to end of chart, noting the 12-st rep will be worked 19 times.***



ABBREVIATIONS: www.patonsyarns.com/glossary

With MC, work 31 rows stocking st, dec 12 sts evenly across first row. 226 sts.

With A, knit 9 rows, dec 9 sts evenly across first row. 217 sts. Cast off knitways (WS).

**With B, work 4 rows stocking st, inc 12 sts evenly across last row. 238 sts.

Side edging: With RS of work facing, A and circular needle, pick up and knit 251 sts along each side edge. Knit 8 rows. Cast off knitways (WS).

Work Chart II in stocking st to end of chart, noting the 19-st rep will be worked 12 times.

With B, work 4 rows stocking st, dec 12 sts evenly across first row. 226 sts.

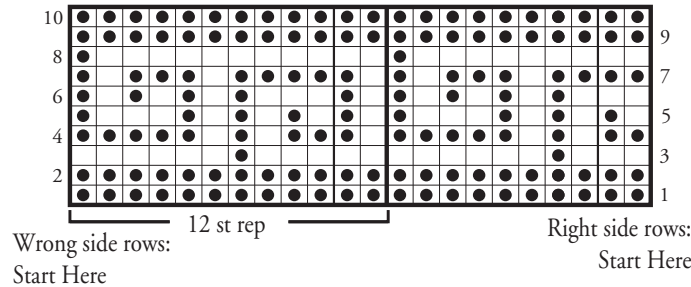
With MC, work 31 rows stocking st.**

Rep from ** to ** 4 times more.

Work from *** to *** once.

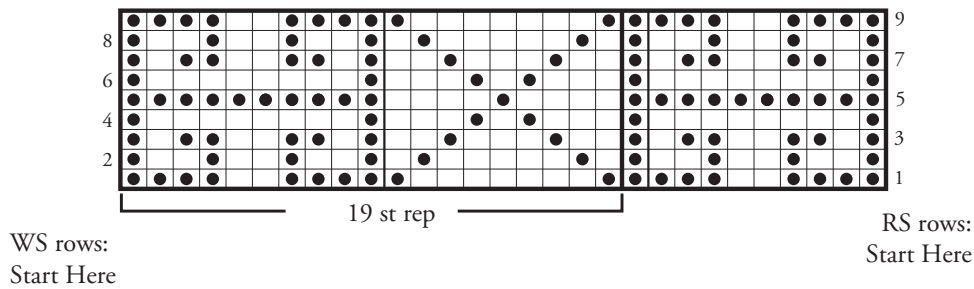
With MC, work 4 rows stocking st, dec 12 sts evenly across first row. 226 sts.

Chart I



Key
● = Contrast A
 = Contrast B

Chart II



Patons

... a part of your life.

P.O. Box 40, Listowel ON N4W 3H3