



 KNIT | SKILL LEVEL: **INTERMEDIATE**

Alt = Alternate(ing)
Approx = Approximately
Inc = Increase(ing)
K = Knit
Pat = Pattern
PM = Place marker
P2sso = Pass 2 slipped stitches over
Rep = Repeat
RS = Right side

Sl2 = Slip next 2 stitches knitwise
SM = Slip marker
Ssk = Slip next 2 stitches knitwise one at a time. Pass them back onto left-hand needle, then knit through back loops together.
St(s) = Stitch(es)
WS = Wrong side
Yo = Yarn over

MEASUREMENTS

Approx 65" [165 cm] wide x 22" [56 cm] at deepest point.

GAUGE

16 sts and 32 rows = 4" [10 cm] in garter stitch

INSTRUCTIONS

With A, cast on 3 sts.

1st row: (RS). (K1. yo) twice. K1. 5 sts.

2nd and alt rows: Knit.

3rd row: (K1. yo) 4 times. K1. 9 sts.

5th row: (K1. yo) twice. K2. yo. PM. K1. yo. K2. (yo. K1) twice. 15 sts.

7th row: (K1. yo) twice. Knit to marker. yo. SM. K1. yo. Knit to last 2 sts. (yo. K1) twice. 21 sts.

8th row: Knit.

Rep last 2 rows for pat, inc 6 sts every other row to 165 sts. Break A. Join B.

With B, work in pat to 273 sts. Break B. Join C.

Border: With C, proceed as follows: See chart on page 2.

1st row: K2. yo. K1. *K4. yo. Sl2. K1. p2sso. yo. K5. Rep from * to 1 st before marker. K1. yo. SM. K1. yo. K1. **K5. yo. Sl2. K1. p2sso. yo. K4. Rep from ** to last 3 sts. K1. yo. K2.

2nd and alt rows: Purl.

3rd row: K2. yo. K2. *K4. yo. Sl2. K1. p2sso. yo. K5. Rep from * to 2 sts before marker. K2. yo. SM. K1. yo. K2. **K5. yo. Sl2. K1. p2sso. yo. K4. Rep from ** to last 4 sts. K2. yo. K2.

MATERIALS

Bernat® Super Value™ (7 oz/197 g; 426 yds/389 m)

Contrast A Dark Heather (53022) **1 ball**

Contrast B Taupe (53012) **1 ball**

Contrast C Dark Mauve (53323) **1 ball**

Size U.S. 8 (5 mm) circular knitting needle 29" [74 cm] long **or size needed to obtain gauge.** Stitch marker.

5th row: K2. yo. K3. *K4. yo. Sl2. K1. p2sso. yo. K5. Rep from * to 3 sts before marker. K3. yo. SM. K1. yo. K3. **K5.yo.Sl2.K1.p2sso.yo.K4. Rep from ** to last 5 sts. K3. yo. K2.

7th row: K2. yo. K4. *K4. yo. Sl2. K1. p2sso. yo. K5. Rep from * to 4 sts before marker. K4. yo. SM. K1. yo. K4. **K5.yo.Sl2.K1.p2sso.yo.K4. Rep from ** to last 6 sts. K4. yo. K2.

9th row: K2. yo. K5. *K3. yo. K1. Sl2. K1. p2sso. K1. yo. K4. Rep from * to 5 sts before marker. K5. yo. SM. K1. yo. K5. **K4. yo. K1. Sl2. K1. p2sso. K1. yo. K3. Rep from ** to last 7 sts. K5. yo. K2.

11th row: K2. yo. K6. *K2. yo. K2. Sl2. K1. p2sso. K2. yo. K3. Rep from * to 6 sts before marker. K6. yo. SM. K1. yo. K6. **K3. yo. K2. Sl2. K1. p2sso. K2. yo. K2. Rep from ** to last 8 sts. K6. yo. K2.

13th row: K2. yo. K7. *K1. yo. K3. Sl2. K1. p2sso. K3. yo. K2. Rep from * to 7 sts before marker. K7. yo. SM. K1. yo. K7. **K2. yo. K3. Sl2. K1. p2sso. K3. yo. K1. Rep from ** to last 9 sts. K7. yo. K2.

15th row: K2. yo. K8. *yo. K4. Sl2. K1. p2sso. K4. yo. K1. Rep from * to 8 sts before marker. K8. yo. SM. K1. yo. K8. **K1. yo. K4. Sl2. K1. p2sso. K4. yo. Rep from ** to last 10 sts. K8. yo. K2.

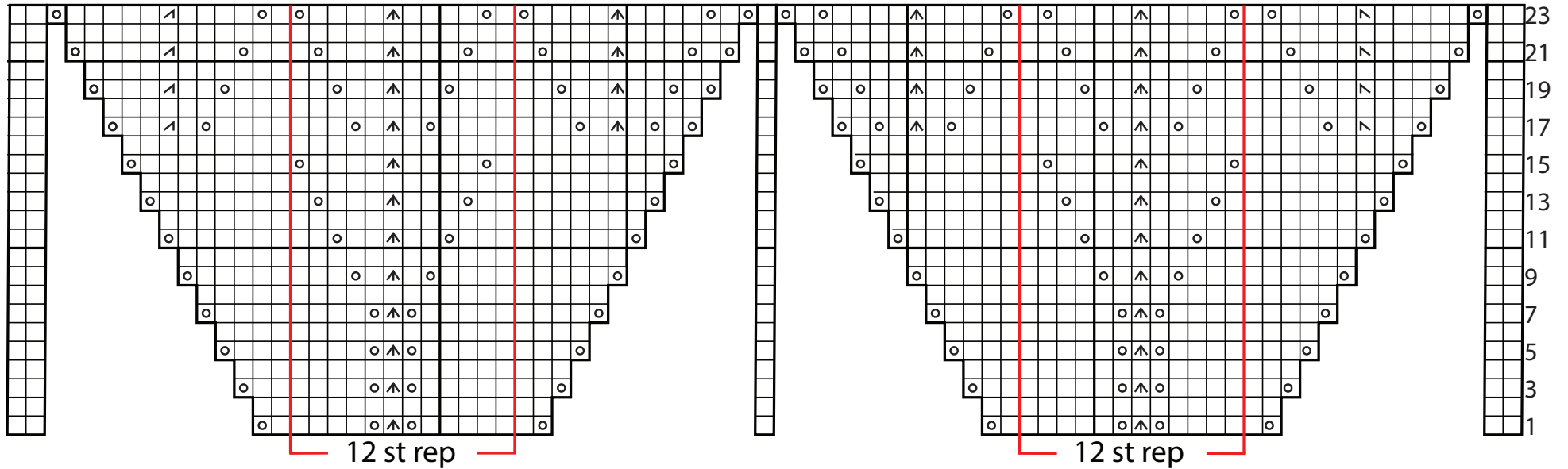
17th row: K2. yo. K2. ssk. K1. yo. K4. *K3. yo. K1. Sl2. K1. p2sso. K1. yo. K4. Rep from * to 9 sts before marker. K3.yo.K1.Sl2.K1.p2sso.(K1. yo) twice. SM. (K1. yo) twice. K1. Sl2. K1. p2sso. K1. yo. K3. **K4. yo. K1. Sl2. K1. p2sso. K1. yo. K3. Rep from ** to last 11 sts. K4. yo. K1. K2tog. K2. yo. K2.

19th row: K2. yo. K3. ssk. K2. yo. K3. *K2 yo. K2. Sl2. K1. p2sso. K2. yo. K3. Rep from * to 10 sts before marker. K2. yo. K2. Sl2. K1. p2sso. K2. yo. K1. yo. SM. (K1. yo) twice. K2. Sl2. K1. p2sso. K2. yo. K2. **K3. yo. K2. Sl2. K1. p2sso. K2. yo. K2. Rep from ** to last 12 sts. K3. yo. K2. K2tog. K3. yo. K2.

21st row: K2. yo. K4. ssk. K3. yo. K2. *K1. yo. K3. Sl2. K1. p2sso. K3. yo. K2. Rep from * to 11 sts before marker. K1. yo. K3. Sl2. K1. p2sso. K3. yo. K1. yo. SM. (K1. yo) twice. K3. Sl2. K1. p2sso. K3. yo. K1. **K2. yo. K3. Sl2. K1. p2sso. K3. yo. K1. Rep from ** to last 13 sts. K2. yo. K3. K2tog. K4. yo. K2.

23rd row: K2. yo. K5. ssk. K4. yo. K1. *yo. K4. Sl2. K1. p2sso. K4. yo. K1. Rep from * to 12 sts before marker. yo. K4. Sl2. K1. p2sso. K4. yo. K1. yo. SM. (K1. yo) twice. K4. Sl2. K1. p2sso. K4. yo. **K1. yo. K4. Sl2. K1. p2sso. K4. yo. Rep from ** to last 14 sts. K1. yo. K4. K2tog. K5. yo. K2.

Cast off **loosely** purlwise (WS).



Key

- = Knit on RS rows. Purl on WS rows
- ⊙ = yo
- ⊠ = Sl2. K1. pssso.
- ▤ = ssk
- ⊠ = K2tog