



KNIT | SKILL LEVEL: **INTERMEDIATE**

ABBREVIATIONS

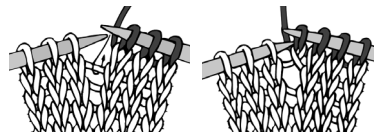
Approx = Approximately

Dec = Decrease(ing)

K = Knit Inc = Increase(ing)

Inc = Increase(ing)

M1 = Make 1 stitch by picking up horizontal loop lying before next stitch and knitting into back of loop.



Pat = Pattern

Rep = Repeat

RS = Right side

Sl1Pwyib = Slip next stitch purl-wise with yarn in back

Sl1Pwyif = Slip next stitch purl-wise with yarn in front

St(s) = Stitch(es)

WS = Wrong side

MEASUREMENTS

Approx 48 x 55" [134 x 165 cm].

GAUGES

8 sts and 20 rows = 4" [10 cm] with larger needles in Herringbone Pat.

7 sts and 16 rows = 4" [10 cm] with smaller needles in garter stitch.

INSTRUCTIONS

Note: Carry color not in use loosely up right side of work.

With A and smaller needles, cast on 85 sts. **Do not** join, working back and forth across needle in

rows, knit 14 rows (garter stitch), noting first row is WS.

Next row: (WS). K1. *M1. K14. Rep from * to end of row. 91 sts (multiple of 8 sts + 3).

Change to larger needle and proceed in Herringbone Pat as follows:

1st row: (RS). With A, K1. *With A, K2. Sl1Pwyib. K3. (Sl1wyib) twice. Rep from * to last 2 sts. With A, K2.

2nd row: With A, K2. *(Sl1Pwyif) twice. K3. Sl1Pwyif. K2. Rep from * to last st. K1.

3rd row: With B, K1. *(K1. Sl1Pwyib) 3 times. K2. Rep from * to last 2 sts. K2.

MATERIALS

Bernat® Blanket™ (10.5 oz/300 g; 220 yds/201 m)

Contrast A Coal (10040)

3 balls or 660 yds/603 m

Contrast B Vintage White (10006)

2 balls or 336 yds/307 m

Sizes U.S. 11 (8 mm) and U.S. 13 (9 mm) circular knitting needles 40" [101.5 cm] long **or size needed to obtain gauge.**

BERNAT® MOSAIC HERRINGBONE KNIT THROW | KNIT

4th row: With B, K2. *K2. (Sl1Pwyif. K1) 3 times. Rep from * to last st. K1.

5th row: With A, K1. *Sl1Pwyib. K3. Sl1Pwyib. K2. Sl1Pwyib. Rep from * to last 2 sts. Sl1Pwyib. K1.

6th row: With A, K1. Sl1Pwyif. *Sl1Pwyif. K2. Sl1Pwyif. K3. Sl1wyif. Rep from * to last st. K1.

7th row: With B, K1. *K2. Sl1Pwyib. K3. Sl1Pwyib. K1. Rep from * to last 2 sts. K2.

8th row: With B, K2. *K1. Sl1Pwyif. K3. Sl1Pwyif. K2. Rep from * to last st. K1.

9th row: With A, K1. *Sl1Pwyib. K2. (Sl1Pwyib) twice. K3. Rep from * to last 2 sts. Sl1Pwyib. K1.

10th row: With A, K1. Sl1Pwyif. *K3. (Sl1Pwyif) twice. K2. Sl1Pwyif. Rep from * to last st. K1.

11th row: With B, K1. *K1. Sl1Pwyib. K3. Sl1Pwyib. K1. Sl1Pwyib. Rep from * to last 2 sts. K2.

12th row: With A, K1. *Sl1Pwyif. K1. Sl1Pwyif. K1. Rep from * to last st. K1.

13th row: With B, K1. *K2. (Sl1Pwyib) twice. K2. Sl1Pwyib. K1. Rep from * to last 2 sts. K2.

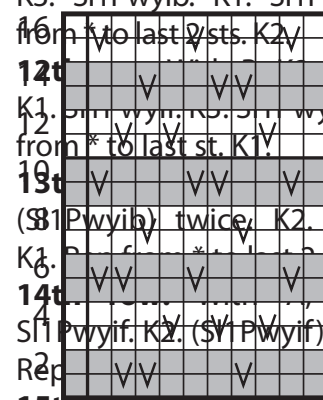
14th row: With B, K1. *K1. Sl1Pwyif. K2. (Sl1Pwyif) twice. K2. Rep from * to last st. K1.

15th row: With B, K1. *Sl1Pwyib. K3) twice. Rep from * to last 2 sts. Sl1Pwyib. K1.

16th r
*(K3. Sl
to last :
Rep 1s
more. E

Change
Next r
Rep fro
Knit 14
Cast of

Side b
needle
130 sts
Blanke
Knit 14
knitwis
Rep for



Key
 = With A, knit.
 = With A, Sl1Pwyib on RS rows, Sl1Pwyif on WS rows.
 = With B, knit.
 = With B, Sl1Pwyib on RS rows, Sl1Pwyif on WS rows.