



## MATERIALS

**Coats & Clark Dual Duty XP® All-purpose Thread:** Bright Green (6450) or to match fabric

$\frac{7}{8}$  yd (80.01cm) solid plush, for body

$\frac{1}{2}$  yd (45.72cm) dimpled plush, for shell

One rectangle felt, (9" x 12" [22.86cm x 30.48cm]), green

1  $\frac{3}{4}$ " (4.45cm) hook-and-loop fastener, 1" (2.54cm), green

1  $\frac{2}{3}$  yd (1.52m) giant rickrack, green

$\frac{1}{4}$  yd (22.86cm) baby rickrack, black

Two buttons,  $\frac{3}{4}$ " (1.91cm)\*, black

Polyester fiberfill, Walking foot (optional), Zipper foot (optional), Hand sewing needle, Pattern tracing cloth

*\*If this pillow is for a child under three, substitute sew-on black felt eyes for the button eyes shown.*



SEWING | SKILL LEVEL: INTERMEDIATE

## Featuring Coats & Clark Dual Duty XP® All-purpose Thread

He's a great cuddly friend for playtime, but there's a secret—this cute stuffed turtle is also a naptime pillow. Just undo his secret tab and he'll flatten out and become the perfect head rest. Coats & Clark Dual Duty XP® All-purpose sews great on plush fabrics.

## MEASUREMENTS

21" (53.34cm) long x 10" (25.40cm) wide x 8" (20.32cm) tall (standing; approximate, depending on the amount of stuffing used)

## PREPARATION

1. Trace the tail, head and foot patterns on pages 3 & 4 onto tracing cloth.
2. Make a full-size shell pattern on page 5.
3. Mark the eye location on the right side of both head halves, and the centers on all edges of both body pieces.

## CUTTING

### From solid plush, cut:

Two rectangles, 16" x 20  $\frac{1}{2}$ " (40.64cm x 52.07cm), for upper and lower body. Using the curve of the foot pattern, round the corners of each body rectangle and trim.

One square, 5" (12.70cm), for tab

Two head

Two tail

### From dimpled plush, cut:

One shell

### From felt, cut:

Four feet

*Seam allowances are  $\frac{1}{4}$ " (.64cm).*

**Note: Do not** press the plush fabric during construction as doing so will ruin the textured surface.





## ASSEMBLY

### Underbody

1. With right sides together, pin both tail pieces together. Stitch the long edges, but leave open the short edge.
2. Turn the tail right side out and lightly stuff. Bring the two seams together and baste the opening end closed.
3. Center and baste the tail straight edge to one long underbody edge.

### Shell

1. Fold the giant rickrack in half and press. Matching the folded edge to the shell cut edge, sew it around the shell shape using a scant ¼" (64cm) seam and turn under the ends to finish. Tuck ends into the seamline.

### Tab

1. Fold the tab square in half and sew one long edge and across one short end. Turn right side out.
2. Center and sew the hook portion of the fastener ⅜" (.95cm) from the finished tab end.
3. Center and baste the tab to one short side of the underbody rectangle right side with the hook side facing down.

### Upper Body

1. Overlay a felt foot on each right side corner of the upper body rectangle and zigzag across the diagonal edge with contrasting thread. Baste the curved edges together.
2. With right sides facing up, center and smooth the shell on the upper body rectangle, extending the rickrack points. The rickrack should clear the seam allowances on all sides. Pin securely.
3. Stitch in the ditch of the rickrack/shell seam to secure it to the upper body rectangle.
4. Center and sew the loop portion of the fastener to the upper body short side opposite from the underbody tab side. (Lay out both pieces in their finished position to double check placement.) Tuck it up under the rickrack, so it's about ½" (1.27cm) from the cut edge.

### Head

1. Place both head pieces right sides together, matching the cut edges. Pin securely around the curved edges. Sew the curved edges, but leave the straight edges open.

2. Fold the head right sides together, matching the center seams. Pin securely. Sew the mouth opening, tapering at each end for a soft curve.
3. Turn the head right side out through the neck opening.
4. Hand stitch the baby rickrack along the mouth seam, turning under both ends to finish.
5. Securely sew on the button eyes and tie threads on the wrong side. If using felt eyes, hand-stitch them in place.
6. Stuff the head to the desired firmness. Fold the head so that the top and chin seams match, and baste the edges together.

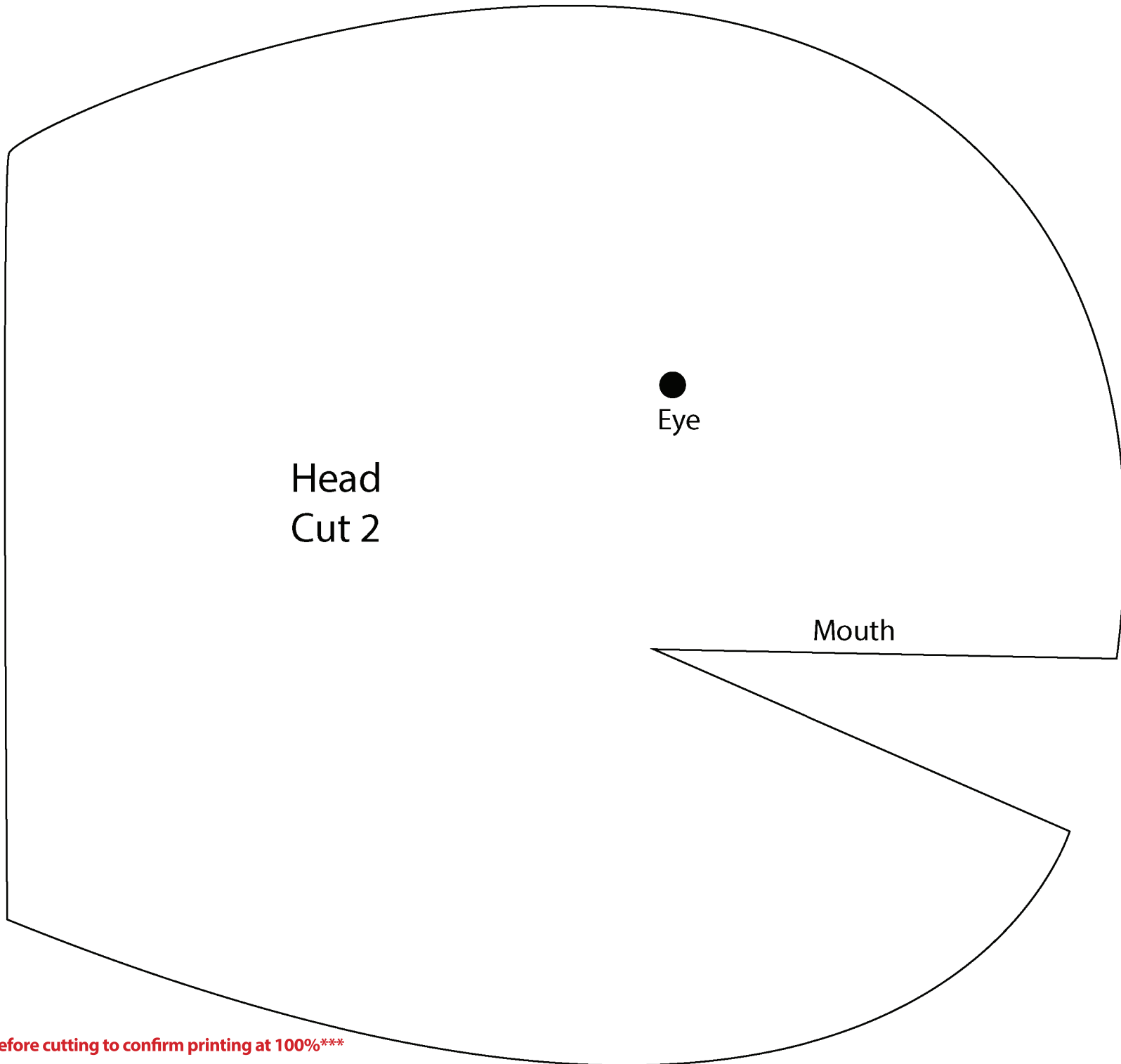
### Turtle

1. With the mouth facing up, center and stitch the head in place on one short side of the upper body rectangle right side. With the head stuffed already, this can be a wrestling match, so use a zipper foot if needed to access the area.
2. On the upper body, pin the rickrack out of the way of the seamline. On the underbody, pin the tab and tail out of the way so they're not caught in the seamline by mistake.

3. Place the upper- and underbody right sides together with the head at the opposite end from the tail, and with the tab side opposite the loop fastener section. Pin securely.
4. Sew around the body rectangles, leaving open in the head area. Turn the turtle right side out through the opening and shape the feet.

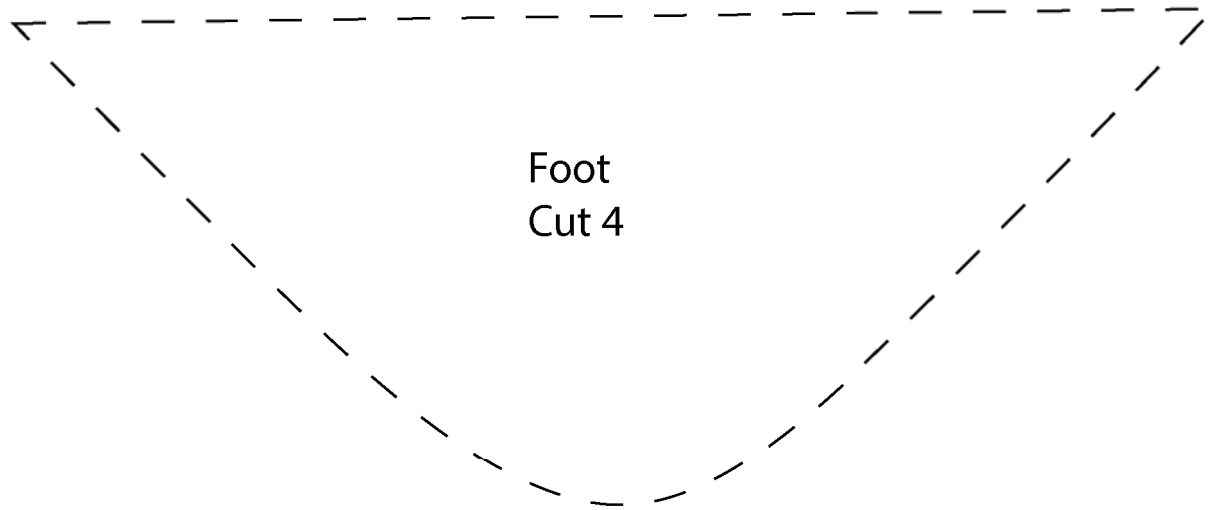
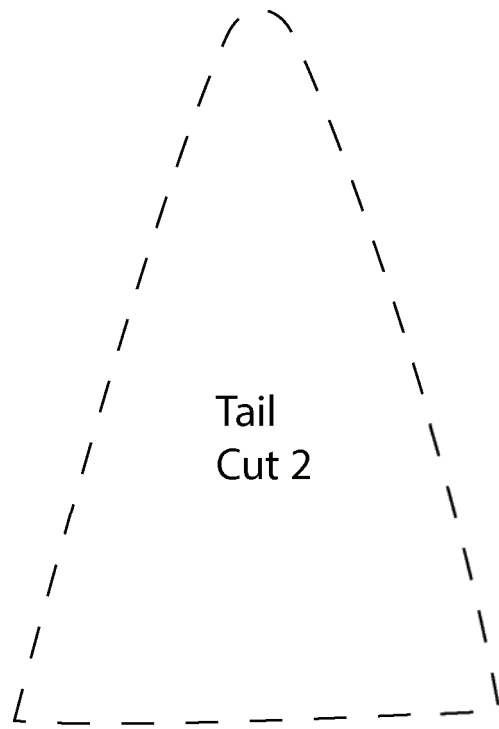
## FINISHING

1. Stuff the turtle to the desired fullness.
2. Turn under the raw edges along the body/head opening and hand-stitch in place to the neck edges. Sew securely and pull up the edges to fit. Add some additional stuffing as you sew the seam, if needed.
3. Invisibly stitch the rickrack points to the upper head for support.
4. To use as a toy, close the tab fastener so the turtle stands up. To use as a pillow, open the tab so the turtle lies flat.



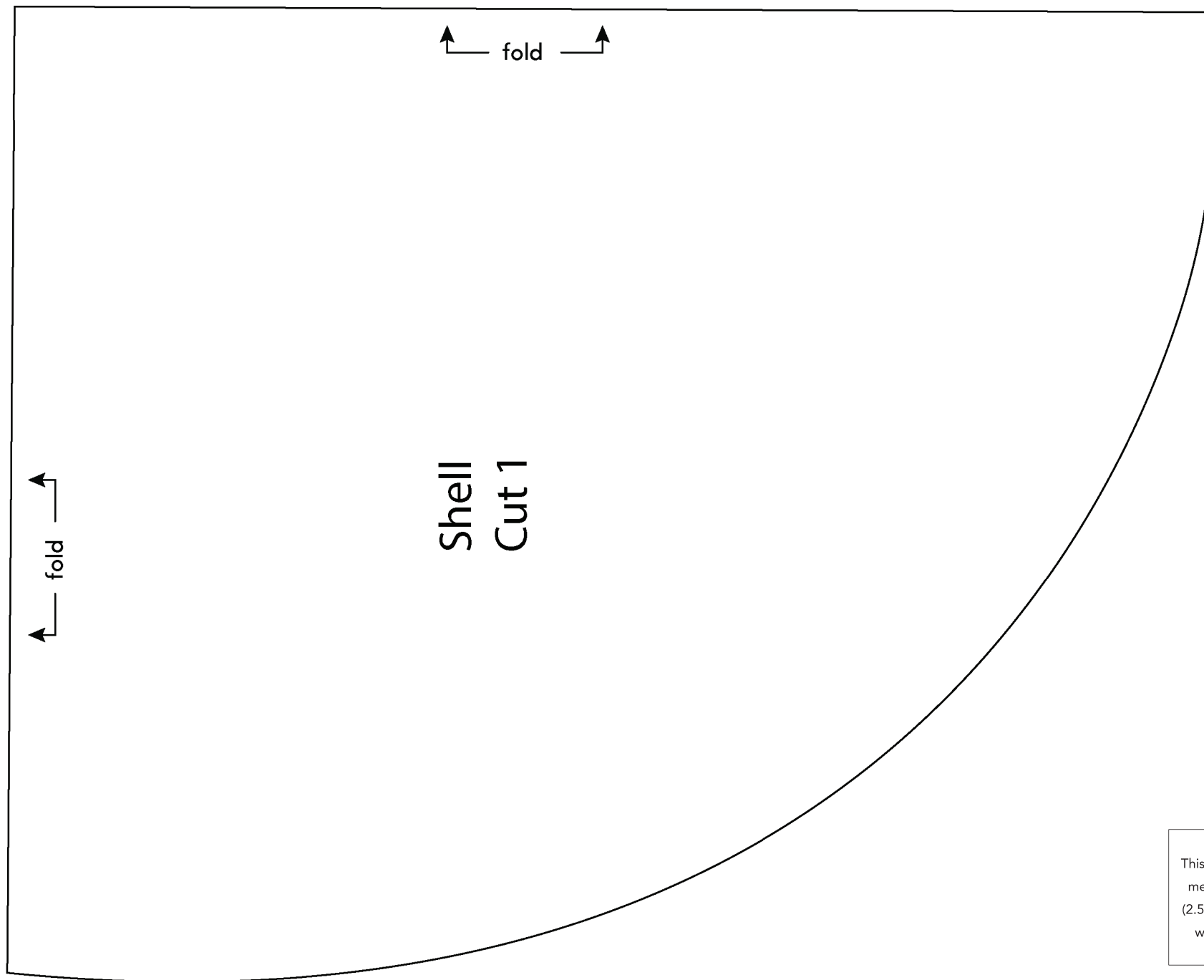
This square should measure 1" x 1" (2.54cm x 2.54cm) when printed.

**\*\*\* Measure templates before cutting to confirm printing at 100%\*\*\***



This square should measure 1" x 1" (2.54cm x 2.54cm) when printed.

**\*\*\* Measure templates before cutting to confirm printing at 100%\*\*\***



Shell  
Cut 1

← fold →

← fold →

This square should  
measure 1" x 1"  
(2.54cm x 2.54cm)  
when printed.

**\*\*\* Measure templates before cutting to confirm printing at 100%\*\*\***