



KNIT
SKILL LEVEL
EASY



Designed by Nancy J Thomas

What you will need:

Red Heart Chunky Soft™:
2 balls each 4601 White **A**
and 4405 Steel **B**

**Susan Bates® Knitting
Needles:** 6mm [US 10]

Pillow form, 20" [51 cm] x 20"
[51 cm], yarn needle

GAUGE: 14 sts = 4" [10 cm];
18 rows = 4" [10 cm] in
Stockinette stitch. **CHECK
YOUR GAUGE. Use any size
needles to obtain the gauge.**



**RED HEART®
Chunky Soft™**, Art
E844 available in
5 oz (141 g) 131 yd
(120 m) balls

SHOP KIT

Initially Yours Pillow

Add an inviting personal note to your home surroundings with this nice ample-sized pillow. This easy-to-knit project also makes the perfect gift to complement modern décor or to update a more traditional decorating style. Chart included for adding duplicate stitch monogram.

Finished Measurement: 20" [51 cm] x
20" [51 cm]

PILLOW FRONT

With **A**, cast on 70 sts.
Knit 1 row.

Row 1 (Right Side): Knit.

Row 2 (Wrong Side): K2, purl to last 2
sts, k2.

Repeat Rows 1 and 2 until piece
measures 20" [51 cm]. Bind off loosely.

PILLOW BACK

With **B**, cast on 70 sts.
Work as for Front.

FINISHING

Weave in ends.

Duplicate Stitch Monogram

Using a contrasting piece of yarn, baste around to mark off a letter placement square that is approximately 2½" [6.5 cm] in from lower right side and up 2½" [6.5 cm] from lower edge.

With **B** and following appropriate letter chart, duplicate stitch monogram in marked square.

With wrong sides together, sew together 3 sides of Front and Back pieces, leaving selvages as border for outlining. With **B**, outline inside of selvages with running stitches. Insert pillow form and sew last seam closed. Complete outlining on final side.

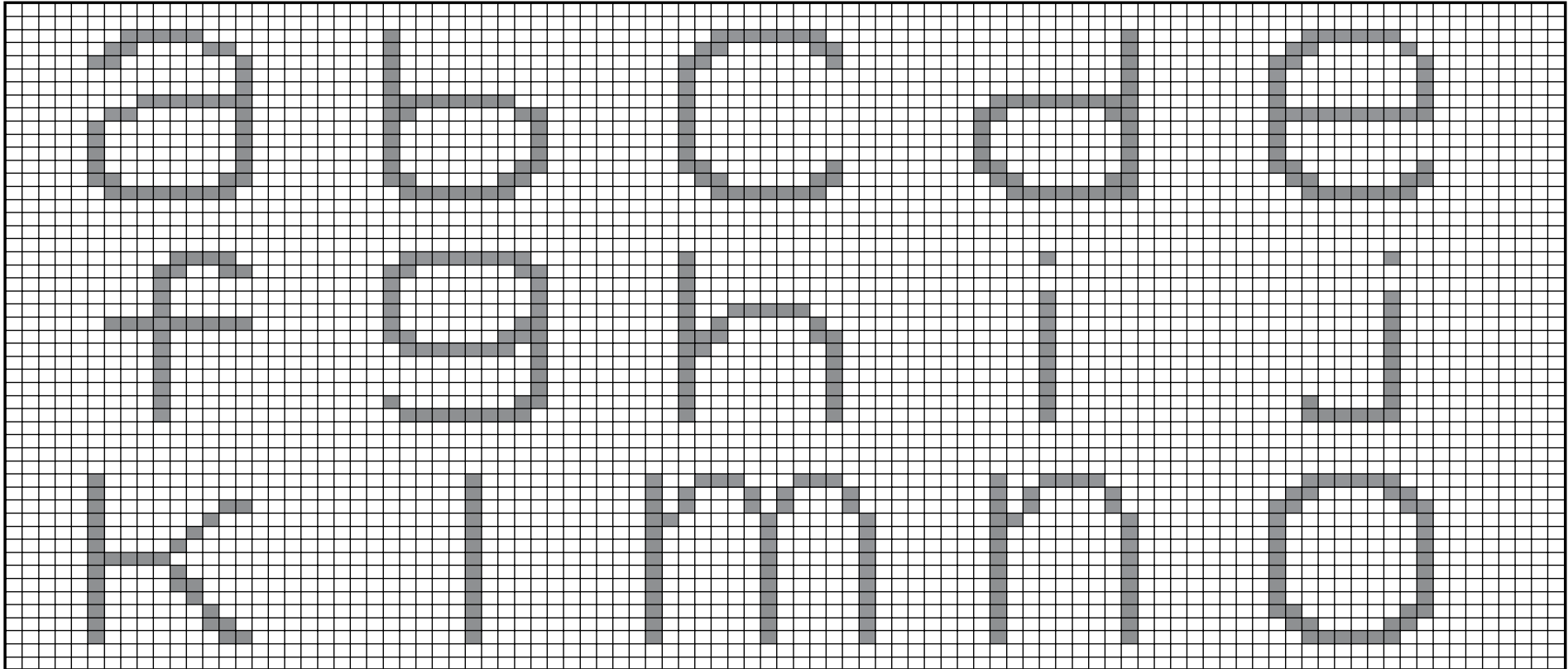
Abbreviations

A, B, C = Color A, B, C; **cm** = centimeters; **k** = knit; **mm** = millimeters; **st(s)** = stitch(es).

See letter charts on next two pages



2015 & 2016
WOMEN'S CHOICE AWARD®
AMERICA'S MOST RECOMMENDED
YARN BRAND



letter chart continued on next page

