



## MATERIALS

**Bernat® Super Value™** (7 oz/197 g; 440 yds/402 m)  
**Main Color (MC)** Dark Gray (53042) **5 balls**

**Bernat® Pop!™** (5 oz/140 g; 280 yds/256 m)  
**Contrast A** Planetary (84005) **5 balls**

Size U.S. H/8 (5 mm) crochet hook **or size needed to obtain gauge.**

## ABBREVIATIONS:

**Approx** =

Approximate(ly)

**Beg** = Begin(ning)(s)

**Ch** = Chain(s)

**Cont** = Continu(e)(ity)

**Dc** = Double crochet

**Pat** = Pattern

**Rep** = Repeat(ing)

**Rnd** = Round

**RS** = Right side

**Sc** = Single crochet

**Sl st** = Slip stitch

**St(s)** = Stitch(es)

**Tog** = Together

**WS** = Wrong side

 CROCHET | SKILL LEVEL: INTERMEDIATE

## MEASUREMENTS

Approx 52½" x 63" (133.5 cm x 160 cm)

## GAUGE

13 dc and 6½ rows = 4" [10 cm].

## INSTRUCTIONS

**Motif** (make 30)

**Note:** Ch 3 at beg of rows counts as dc.

With MC, ch 36.

Work Chart, noting each square of chart is equal to 2 dc and reading RS rows from right to left and WS rows from left to right. Carry color not in use across top of entire previous row and work sts around it. This will ensure even gauge as all sts will be worked around an extra strand of yarn held across top of previous row. Carry both colors up side of work

**1st row:** (RS). 1 dc in 4th ch from hook. 1 dc in each ch to end of ch. Turn. 34 dc.

**2nd row:** Ch 3. 1 dc in each dc to end of row. Turn.

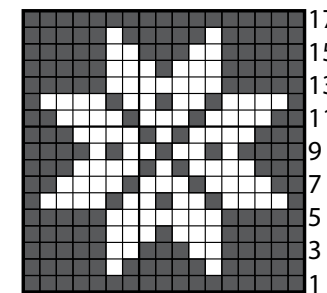
Rep 2nd row and cont working Chart until 17th row of chart is complete. Fasten off.

## Assembly

With MC, work 1 row of sc through front loops only to join Motifs tog. Join into 5 Strips, having 6 Motifs in each Strip. Work 1 row of sc through front loops only to join Strips tog.

**Border:** With RS facing, join MC with sl st to any corner.

**1st rnd:** Ch 3 (counts as dc). Work dc evenly around outer edge, working 5 dc in each corner. Join with sl st to top of ch 3. Fasten off.



Note: Each square in chart is equal to 2 dc

Key

■ = MC

□ = Contrast A