



CROCHET  
SKILL LEVEL  
INTERMEDIATE

Designed by Ann Regis

## What you will need:

**RED HEART® Soft®:** 5 balls 4614 Black **A**, and 4 balls 4601 Off White **B**

**Susan Bates® Crochet Hook:**  
5mm [US H-8]

Yarn needle

**GAUGE:** 16 sts = 4" [10 cm];  
11 rows = 5" [12.5 cm] in  
Houndstooth pattern worked in  
double crochet. **CHECK YOUR  
GAUGE. Use any size hook to  
obtain the gauge.**



**RED HEART® Soft®,**  
Art. E728 available in  
solid color 5 oz (141 g),  
256 yd (234 m), print 4 oz (113 g),  
204 yd (187 m), and heather 4oz  
(113g), 212 yd (194m) balls

SHOP KIT



**Throw measures about 45" [114.5 cm]  
wide and 54" [137 cm] long.**

## Notes

1. Throw is worked in tapestry crochet. Two strands are used at all times. One strand is used to work the stitches and the other is "carried" under the stitches. The two strands are swapped at a color change.
2. To change color, work last stitch of old color to last yarn over. Yarn over with new color and draw through all loops on hook to complete stitch. Proceed with new color. "Carry" old color beneath the stitches of the new color. When changing color, always keep **B** in front of **A**.
3. Take care to "carry" the unused color all the way to the side edge to keep the thickness of the throw consistent throughout and to ensure that the correct color is available at the beginning of rows.
4. The Houndstooth pattern can be worked by following the written instructions or reading the chart. Read right side rows of chart from right to left and wrong side rows from left to right.
5. Edgings and border are worked with a single strand of the indicated color. Do not carry the other color.

Continued...

# Houndstooth Throw

*Houndstooth is one of the biggest trends seen on fashion runways and for home accessories with flair. Crochet your houndstooth throw in classic black and white or change it up to fit your own color scheme. For those who are more visual, we have included a charted repeat along with the written pattern.*



2015  
**WOMEN'S CHOICE AWARD™**  
AMERICA'S MOST RECOMMENDED  
YARN BRAND



## THROW

With **A**, ch 156.

**Foundation Row:** Work dc in 3rd ch from hook (2 skipped ch do not count as a st) and in each ch across—154 dc.

### Houndstooth Pattern

**Row 1 (right side):** With **A**, ch 2 (does not count as a st here and throughout), turn, dc in first 3 sts; with **B**, dc in next 2 sts; \*with **A**, dc in next 6 sts; with **B**, dc in next 2 sts; repeat from \* to last 5 sts; with **A**, dc in last 5 sts.

**Row 2:** With **A**, ch 2, turn, dc in first 5 sts; with **B**, dc in next 2 sts; \*with **A**, dc in next 6 sts; with **B**, dc in next 2 sts; rep from \* to last 3 sts; with **A**, dc in last 3 sts.

**Row 3:** With **A**, ch 2, turn, dc in first 3 sts; \*with **B**, dc in next 6 sts; with **A**, dc in next 2 sts; repeat from \* to last 7 sts; with **B**, dc in next 6 sts; with **A**, dc in last st.

**Rows 4 and 5:** With **A**, ch 2, turn, dc in first st; with **B**, dc in next 6 sts; \*with **A**, dc in next 2 sts; with **B**, dc in next 6 sts; repeat from \* to last 3 sts; with **A**, dc in last 3 sts.

**Row 6:** Repeat Row 3.

**Row 7:** Repeat Row 2.

**Row 8:** Repeat Row 1.

**Rows 9-96:** Repeat Rows 1-8 eleven more times.

**Last Row (right side):** With **A**, ch 2, turn, dc in each st across.  
Fasten off.

## FINISHING

**Top and Side Edging (right side):** With right side facing, skip beginning ch of last row of Throw, join **A** with slip st in space between first and 2nd dc of last row of Throw, ch 3 (counts as dc), dc in same

space, \*ch 1, skip next 2 dc, dc in next space between sts; repeat from \* to last 3 sts, ch 1, skip next 2 dc, 2 dc in next space between sts, ch 2 for corner, skip last st; rotate piece to work in ends of rows down side edge, work 2 dc in end of first row, \*\*ch 1, dc in end of next row; repeat from \*\* to last row, ch 1, 2 dc in end of last row—179 dc and 173 ch-1 spaces (79 dc and 76 ch-1 spaces on top edge, and 100 dc and 97 ch-1 spaces on side edge).

Fasten off.

**Lower and Side Edging (wrong side):** With wrong side facing, join **A** with slip st in corner of long side edge (in top of the ch-3 beginning ch of top edging), ch 2 for corner, 2 dc in end of row of top edging, \*ch 1, dc in end of next row; repeat from \* to last row, ch 1, 2 dc in end of last row, ch 2 for corner; working across opposite side of foundation ch, skip beginning ch, 2 dc in space between first and 2nd dc, \*\*ch 1, skip next 2 dc, dc in next space between sts; repeat from \*\* to last 3 sts, ch 1, skip next 2 sts, 2 dc in next space between sts, ch 2 for corner, slip st in top of last dc of side edging row.  
Fasten off.

### Border

**Round 1 (right side):** With right side facing, join **A** with slip st in any corner ch-2 space, ch 3 (counts as dc), dc in same space, [dc in each dc and ch-1 space to next corner ch-2 space, (2 dc, ch 2, 2 dc) in corner ch-2 space] 3 times, dc in each dc and ch-1 space to first corner ch-2 space, work 2 more dc in first corner ch-2 space; join with ch 1, sc in top of beginning ch (joining ch 1, sc counts as first corner ch-2 space).

**Round 2:** Ch 3 (counts as dc), dc in first corner ch-2 space, [\*ch 1, skip next dc, dc in next dc; repeat from \* to next corner ch-2 space, ch 1, (2 dc, ch 2, 2 dc) in corner ch-2 space] 3 times, \*\*ch 1, skip next dc, dc in next dc; repeat from \*\* to first corner ch-2 space, ch 1, work 2 more dc in first corner ch-2 space; join with ch 1, sc in top of beginning ch (counts as first corner ch-2 space).

**Round 3:** Ch 3 (counts as dc), dc in first corner ch-2 space, [dc in each dc and ch-1 space to next corner ch-2 space, (2 dc, ch 2, 2 dc) in corner ch-2 space] 3 times, dc in each dc and ch-1 space to first corner ch-2 space, work 2 more dc in first corner ch-2 space; join with ch 1, sc in top of beginning ch (counts as first corner ch-2 space).

**Round 4:** Repeat Round 2.  
Fasten off.

**Round 5 (right side):** With right side facing, join **B** with slip st in any corner ch-2 space, ch 2, 2 sc in same corner ch-2 space, [ch 2, \*sc in next ch-1 space, ch 1; repeat from \* to next corner ch-2 space, ch 2, (2 sc, ch 2, sc) in corner ch-2 space] 3 times, ch 2, \*\*sc in next ch-1 space, ch 1; repeat from \*\* to first corner ch-2 space, ch 2, work 2 more sc in first corner ch-2 space; join with ch 1, sc in beginning ch-2 (counts as first ch-2 space).

**Round 6:** Ch 1, hdc in first corner ch-2 space, [ch 2, \*hdc in next ch-1 space, ch 1; repeat from \* to corner ch-2 space, ch 2, hdc in corner ch-2 space] 3 times, ch 2, \*\*hdc in next ch-1 space, ch 1; repeat from \*\* to first corner ch-2 space, ch 2; join with slip st in top of beginning hdc.

Fasten off.

Weave in ends.

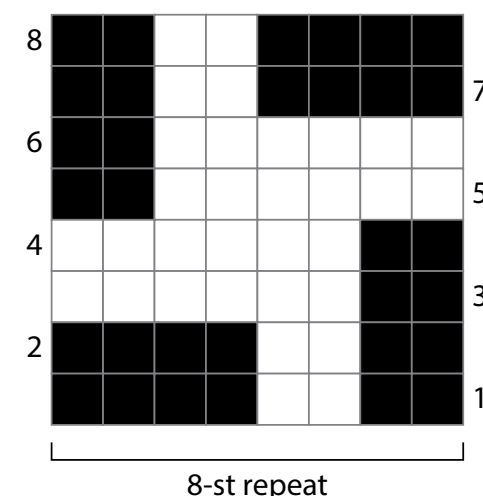
## ABBREVIATIONS

**A and B etc.** = Color A and Color B;

**ch** = chain; **dc** = double crochet; **hdc** = half double crochet; **sc** = single crochet;

**st(s)** = stitch(es); **()** = work directions in parentheses into same st; **[ ]** = work directions in brackets the number of times specified; **\* or \*\*** = repeat whatever follows the \* or \*\* as indicated.

### Houndstooth Pattern



■ 4614 Black (A)  
□ 4601 White (B)