



 CROCHET | SKILL LEVEL: **INTERMEDIATE**

ABBREVIATIONS

- Approx** = Approximate(ly)
Beg = Begin(ing)
Ch = Chain(s)
Cont = Continue
Dc = Double crochet
Dcbp = Yoh and draw up a loop around post of next stitch at back of work, inserting hook from right to left. (Yoh and draw through 2 loops on hook) twice.
Dcfp = Yoh and draw up a loop around post of next stitch at front of work, inserting hook from right to left. (Yoh and draw through 2 loops on hook) twice.
Pat = Pattern
Rem = Remaining
Rep = Repeat
Rnd(s) = Round(s)
RS = Right side
Sc = Single crochet
Sl st = Slip stitch
St(s) = Stitch(es)
Tog = Together
WS = Wrong side
Yoh = Yarn over hook

MEASUREMENTS

Approx 9" [23 cm] square x 5½" [14 cm] high.

GAUGE

13 sc and 14 rows = 4" [10 cm].

INSTRUCTIONS

Notes:

- When joining new color while working lining, work to last 2 loops on hook of last st. Draw new color through 2

loops, then proceed in new color.

- Carry color not in use loosely across top of previous row and work sts around it to prevent stranding.

BASKET SIDES (make 4)

With A, ch 37.

1st row:(RS). 1 dc in 4th ch from hook (counts as 2 dc). 1 dc in each ch to end of ch. Turn. 35 dc.

2nd row: Ch 2 (counts as hdc). *Dcfp around each of next 3 dc.

MATERIALS

Lily® Sugar'n Cream® (2.5 oz/70.9 g; 120 yds/109 m)

Contrast A Warm Brown (01130) **3 balls or 337 yds/308 m**

Contrast B Soft Ecru (01004) **2 balls or 148 yds/136 m**

Contrast C Red (00095) **2 balls or 148 yds/136 m**

Size U.S. H/8 (5 mm) crochet hook **or size needed to obtain gauge.**



Dcbp around each of next 3 dc. Rep from * to last 4 dc. Dcfp around each of next 3 dc. 1 hdc in last dc. Turn.

3rd row: Ch 2 (counts as hdc). *Dcbp around each of next 3 sts. Dcfp around each of next 3 sts. Rep from * to last 4 sts. Dcbp around each of next 3 sts. 1 hdc in last hdc. Turn.

4th row: As 3rd row.

5th row: Ch 2 (counts as hdc). *Dcfp around each of next 3 sts. Dcbp around each of next 3 sts. Rep from * to last 4 sts. Dcfp around each of next 3 dc. 1 hdc in last hdc. Turn.

Rep 2nd to 5th rows for pat twice more. Fasten off.

BASKET BASE

With A, ch 37.

1st row: 1 sc in 2nd ch from hook. 1 sc in each ch to end of ch. Turn. 36 sc.

2nd row: Ch 1. 1 sc in each sc to end of row. Turn.

Rep last row until piece measures approx 9" [23 cm]. Fasten off.

LINING SIDES (make 4)

**With B, ch 37.

1st row: (RS). With B, 1 sc in 2nd ch from hook. 1 sc in each of next 3 ch. *With A, 1 sc in each of next 4 ch. With B, 1 sc in each of next 4 ch. Turn. 36 sc.

First row of Chart is now complete.**

Cont in Chart, working 1st to 8th rows twice, then 1st to 4th rows once (20 rows total). Fasten off.

LINING BASE

Work from ** to ** as given for Lining Sides.

Cont in Chart, working 1st to 8th rows 4 times, then 1st to 4th rows once (36 rows total). Fasten off.

FINISHING

Join Basket Sides: With WS tog, join A with sl st to bottom right corner. Ch 1. Working through both thicknesses, work 1 row of sc evenly to top edge to join sides. Fasten off.

Rep for rem 3 sides.

Join Basket Base to Sides: Place lower edge of Sides behind Base with WS of work tog, aligning corners of Base with side seams.

Join A with sl st to any corner.

1st rnd: Ch 1. Working through both thicknesses, work 1 rnd of sc evenly around all 4 sides of Base, working 3 sc in each corner. Join with sl st to first sc. Fasten off.

Join Lining Sides: With RS tog, join B with sl st to bottom right corner. Ch 1. Working through both thicknesses, work 1 row of sc evenly to top edge to join sides. Fasten off. Rep for rem 3 sides.

Join Lining Base to Lining Sides: Place lower edge of Lining Sides behind Lining Base with RS of work tog, aligning corner of Base with side seams. Join B with sl st to any corner.

1st rnd: Ch 1. Working through both thicknesses, work 1 rnd of sc evenly around all 4 sides of Lining Base, working 3 sc in each corner. Join with sl st to first sc. Fasten off.

Join Basket to Lining: Place Lining inside Basket, making sure all corners are aligned properly and top edges are even.

1st rnd: With RS of Lining facing you, join A with sl st to any sc. Working through both thicknesses,

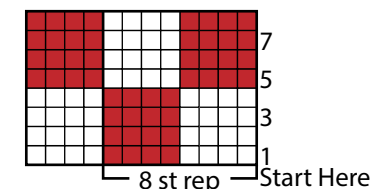
work 1 rnd of sc evenly around top edge to join Basket and Lining. Join with sl st to first sc.

2nd rnd: Turn work so RS of Basket is facing you. Ch 1. Working from left to right instead of from right to left as usual, work 1 rnd of reverse sc in each sc around. Join with sl st to first sc. Fasten off.

Reverse sc diagram



Chart



Key
 □ = Contrast B
 ■ = Contrast C

