



MATERIALS

Bernat® Blanket Brights™ (10.5 oz/300 g; 220 yds/201 m)

Contrast A Go-Go Green (12004) **4 balls or 750 yds/685 m**

Contrast B Surf Varg (12009) **4 balls or 750 yds/685 m**

Size U.S. N/15 (10 mm) crochet hook **or size needed to obtain gauge.**

ABBREVIATIONS:

Approx = Approximate(ly)

Beg = Begin(ning)

Ch = Chain(s)

Cont = Continue

Dc = Double crochet

Pat = Pattern

Rep = Repeat

RS = Right side

Sl st = Slip stitch

Sp = Space

St(s) = Stitch(es)

WS = Wrong side

 CROCHET | SKILL LEVEL: **EASY**

MEASUREMENTS

Approx 55 x 60" [139.5 x 152.5 cm].

INSTRUCTIONS

Note: Work is turned after working 2 RS or WS rows. Carry colors when not in use loosely up side of work.

With A, ch 132.

1st row: (RS). 2 dc in 4th ch from hook (counts as 3 dc). Ch 3. *Skip next 7 ch. (2 dc. Ch 1. 2 dc) in next ch. Ch 3. Rep from * to last 8 ch. Skip next 7 ch. 3 dc in last ch. **Turn.**

2nd row: (WS). Ch 3. *(2 dc. Ch 1. 2 dc) in 4th ch of 7 skipped ch one row below (working over ch 3 of previous row). Ch 3. Rep from * to last ch-3 sp. (2 dc. Ch 1. 2 dc) in 4th ch of 7 skipped ch one row below (working over ch 3 of previous row). Ch 1. 1 sc in top of first ch 3. Drop A. **Turn.**

3rd row: (RS). Join B with sl st to first sc. Ch 3 (counts as dc). 2 dc in same sp as last sl st. Ch 3. *Skip next (2 dc. Ch 1. 2 dc). (2 dc. Ch 1. 2 dc) in next ch-1 sp 2 rows below (working over ch 3 of previous row). Ch 3. Rep from * to end of row. 3 dc in top of last dc 2 rows below. Drop B. **Do not turn.**

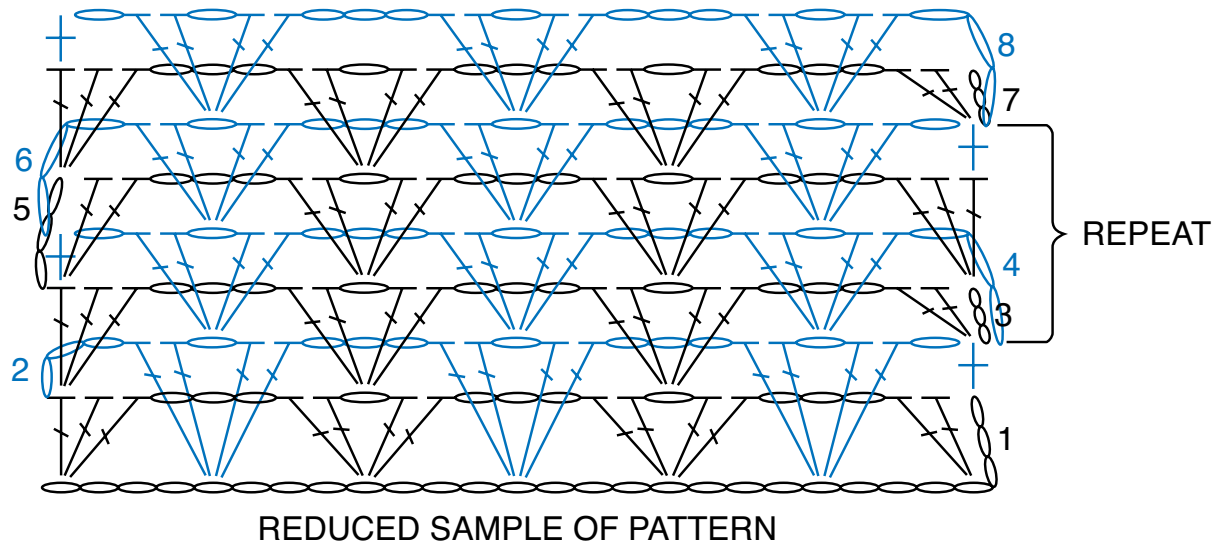
GAUGE

6 dc and 3 rows = 4" [10 cm].

4th row: (RS). Pick up A. Ch 3. *(2 dc. Ch 1. 2 dc) in next ch-1 sp 2 rows below (working over ch 3 of previous row). Ch 3. Skip next (2 dc. Ch 1. 2 dc). Rep from * to last (2 dc. Ch 1. 2 dc). Ch 1. 1 sc in last dc. Drop A. **Turn.**

5th row: (WS). Pick up B. Ch 3 (counts as dc). 2 dc in first dc 2 rows below. *Ch 3. Skip next (2 dc. Ch 1. 2 dc). (2 dc. Ch 1. 2 dc) in next ch-1 sp 2 rows below (working over ch 3 of previous row). Rep from * to last (2 dc. Ch 1. 2 sc). Ch 3. 3 dc in top of ch-3 2 rows below. Drop B. **Do not turn.**

6th row: (WS). As 4th row. Last 4 rows form pat. Cont in pat until work from beg measures approx 60" [152.5 cm] long, ending on a row worked in A. Fasten off.



STITCH KEY

- = chain (ch)
- ⊥ = single crochet (sc)
- ⌋ = double crochet (dc)