



MATERIALS

Bernat® Softee® Baby™ (5 oz/140 g; 362 yds/331 m)

Contrast A Soft Lilac (30185) **2 balls**

Contrast B Mauve (30310) **1 ball**

Contrast C White (02000) **1 ball**

Size U.S. G/6 (4 mm) crochet hook **or size needed to obtain gauge.**

ABBREVIATIONS:

Approx = Approximate(ly)

Beg = Begin(ning)

Ch = Chain(s)

Dc = Double crochet

Rep = Repeat

Rnd = Round

Sc = Single crochet

Sl st = Slip stitch

Sp(s) = Space(s)

St(s) = Stitch(es)

 CROCHET | SKILL LEVEL: EASY

MEASUREMENT

Approx 36" [91.5 cm] square.

GAUGE

One Motif = 5¾" [14.5 cm] square.

INSTRUCTIONS

MOTIF (make 36)

Note: Ch 3 at beg of row counts as dc throughout.

With B, ch 6. See diagram on page 2.

1st row: 1 dc in 4th ch from hook. 1 dc in each of next 2 ch. Turn.

2nd row: Ch 3. 1 dc in each of next 2 dc. 4 dc in loop made by turning ch of previous row. Turn. 7 dc.

3rd row: Ch 3. 1 dc in each of next 2 dc. (2 dc. Ch 2. 2 dc) in next dc. 1 dc in each of last 3 dc. Join A. Turn.

4th row: With A, ch 4 (counts as dc and ch 1). Skip next dc. 3 dc in next dc. Ch 1. (3 dc. Ch 2. 3 dc) in corner ch-2 sp. Ch 1. Skip next 2 dc. 3 dc in next dc. Ch 1. Skip next dc. 1 dc in last dc. Turn.

5th row: Ch 3. 1 dc in first ch-1 sp. Ch 1. 3 dc in next ch-1 sp. Ch 1. (3 dc. Ch 2. 3 dc) in corner ch-2 sp. Ch 1. 3 dc in next ch-1 sp. Ch 1. 1 dc in 4th ch of turning ch. 1 dc in 3rd ch of turning ch. Turn.

6th row: Ch 4 (counts as dc and ch 1). (3 dc in next ch-1 sp. Ch 1) twice. (3 dc. Ch 2. 3 dc) in corner ch-2 sp. (Ch 1. 3 dc in next ch-1 sp) twice. Ch 1. Skip next dc. 1 dc in last dc. Join C. Turn.

7th row: With C, ch 3. 1 dc in first ch-1 sp. (Ch 1. 3 dc in next ch-1 sp) twice. Ch 1. (3 dc. Ch 2. 3 dc) in corner ch-2 sp. (Ch 1. 3 dc in next ch-1 sp) twice. Ch 1. 1 dc in 4th ch of turning ch. 1 dc in 3rd ch of turning ch. Join B. Turn.

8th row: With B, ch 4 (counts as dc and ch 1). (3 dc in next ch-1 sp. Ch 1) 3 times. (3 dc. Ch 2. 3 dc) in corner ch-2 sp. (Ch 1. 3 dc in next ch-1 sp) 3 times. Ch 1. Skip next dc. 1 dc in last dc. Join C. Turn.

9th row: With C, ch 3. 1 dc in first ch-1 sp. (Ch 1. 3 dc in next ch-1 sp) 3 times. Ch 1. (3 dc. Ch 2. 3 dc) in corner ch-2 sp. (Ch 1. 3 dc in next ch-1 sp) 3 times. Ch 1. 1 dc in 4th ch of turning ch. 1 dc in 3rd ch of turning ch. Join A. Turn.

BERNAT® BUILDING BLOCKS CROCHET BLANKET | CROCHET

10th row: With A, ch 4 (counts as dc and ch 1). (3 dc in next ch-1 sp. Ch 1) 4 times. (3 dc. Ch 2. 3 dc) in corner ch-2 sp. (Ch 1. 3 dc in next ch-1 sp) 4 times. Ch 1. Skip next dc. 1 dc in last dc. Turn.

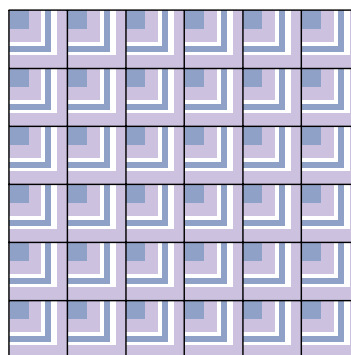
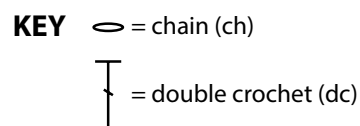
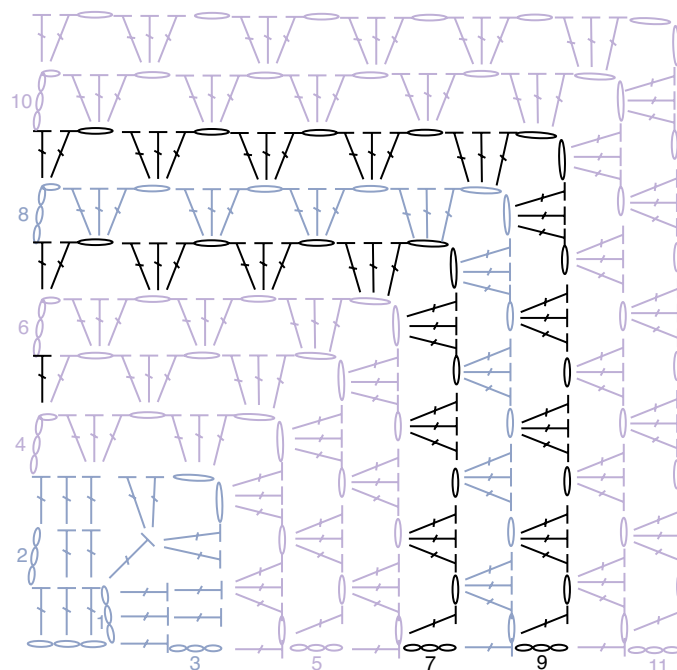
11th row: Ch 3. 1 dc in first ch-1 sp. (Ch 1. 3 dc in next ch-1 sp) 4 times. Ch 1. (3 dc. Ch 2. 3 dc) in corner ch-2 sp. (Ch 1. 3 dc in next ch-1 sp) 4 times. Ch 1. 1 dc in 4th ch of turning ch. 1 dc in 3rd ch of turning ch. Fasten off.

FINISHING

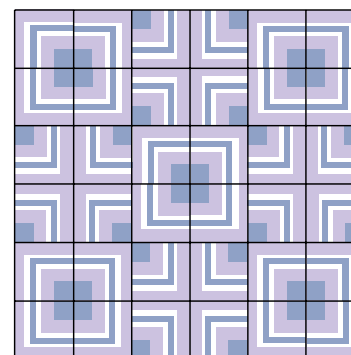
Following diagram for Version 1, 2 or 3, assemble Motifs as desired.

Edging: 1st rnd: (RS). Join C with sl st in any corner ch-2 sp of Blanket. Ch 1. 3 sc in same sp. (Work 22 sc across side of next 6 Motifs. 3 sc in next corner) 3 times. Work 22 sc across side of next 6 Motifs. Join with sl st to first sc. 540 sc.

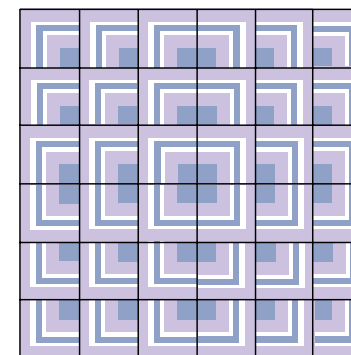
2nd rnd: Ch 3. 1 dc in same sc as last sl st. *Skip next 2 sc. (1 sc. Ch 3. 1 dc) in next sc. Rep from * around, ending with skip last 2 sc. Join with sl st to first sc. Fasten off.



Version 1



Version 2



Version 3