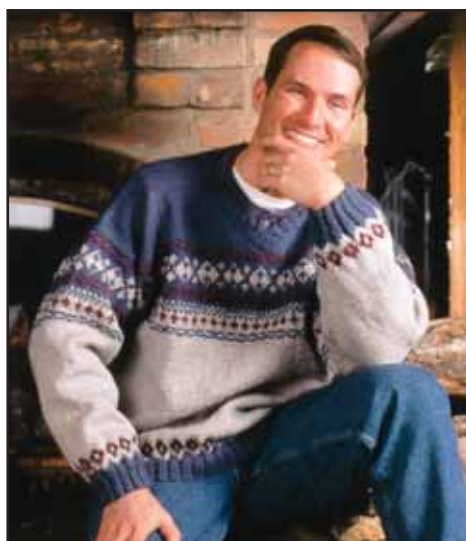


Patons
Classic Wool

Patons
DECOR



FAIR ISLE V-NECK

SIZES

Bust/chest measurement

Small	30-32 ins	[76-81	cm]
Medium	34-36 ins	[86-91	cm]
Large	38-40 ins	[97-102	cm]
X-Large	42-44 ins	[107-112	cm]

Finished bust/chest

Small	42½ ins	[108	cm]
Medium	45½ ins	[116.5	cm]
Large	49 ins	[124.5	cm]
X-Large	52 ins	[132	cm]

TENSION

20 sts and 26 rows = 4 ins [10 cm]
with larger needles in stocking st.

MATERIALS

Size S M L XL
Patons Decor (100 g/3.5 oz)

Main Color (MC) (blue)
4 5 5 6 balls

Contrast A (grey)
3 3 3 3 balls

Contrast B (red)
1 1 1 1 ball

Sizes 4 mm (U.S. 6) and 4.5 mm (U.S. 7) knitting needles **or size needed to obtain tension.**
1 st holder.

INSTRUCTIONS

The instructions are written for smallest size. If changes are necessary for larger sizes the instructions will be written thus ().

Note: When working from charts, carry yarn not in use loosely across WS of work but never over more than 5 sts. When it must pass over more than 5 sts, weave it over and under color in use on next st or at centre point of sts it passes over. The colors are never twisted around one another.

BACK

With A and smaller needles, cast on 106 (114-122-130**) sts.

1st row: (RS). K2. *P2. K2. Rep from * to end of row.

2nd row: P2. *K2. P2. Rep from * to end of row.

Rep these 2 rows (K2. P2) ribbing for 2 ins [5 cm] ending on a 2nd row and inc 11 sts evenly across last row. 117 (**125-133-141**) sts.

Change to larger needles and proceed as follows:

Work Chart I in stocking st to end of chart, reading **knit** rows from **right** to left and **purl** rows from **left** to right, noting the 6 st rep will be worked 19 (**20-22-23**) times.

Next row: (RS). With MC, knit, dec 11 sts evenly across. 106 (**114-122-130**) sts.

Cont in stocking st until work from beg measures 14 (**15-16-16½**) ins [35.5 (**38-40.5-42**) cm] ending with RS facing for next row and inc 11 sts evenly across last row. 117 (**125-133-141**) sts.

Work Chart II in stocking st to end of chart, reading **knit** rows from **right** to left and **purl** rows from **left** to right.

Next row: (WS). Purl, dec 10 sts evenly across. 107 (**115-123-131**) sts.**

With A, cont in stocking st until work from beg measures 25 (**26-27-28**) ins [63.5 (**66-68.5-71**) cm] ending with RS facing for next row.

Shoulder shaping: Cast off 11 (**12-13-15**) sts beg next 4 rows, then 12 (**13-14-14**) sts beg following 2 rows. Leave rem 39 (**41-43-43**) sts on a st holder.

FRONT

Work from ** to ** as given for Back.

Shape neck: Next row: With A, K53 (**57-61-65**) (neck edge).

Turn. Leave rem sts on a spare needle.



ABBREVIATIONS: www.patonsyarns.com/glossary

Patons

... a part of your life.

P.O. Box 40, Listowel ON N4W 3H3

Dec 1 st at neck edge on next 10 (10-12-14) rows, then on following alt rows until there are 34 (37-40-44) sts.

Cont even until work from beg measures 25 (26-27-28) ins [63.5 (66-68.5-71) cm] ending with RS facing for next row.

Shoulder shaping: Cast off 11 (12-13-15) sts beg next and following alt row. Work 1 row even. Cast off rem 12 (13-14-14) sts.

With RS of work facing slip next st from spare needle onto a safety pin. Join A to rem sts and knit to end of row.

Dec 1 st at neck edge on next 10 (10-12-14) rows, then on following alt rows until there are 34 (37-40-44) sts.

Cont even in stocking st until work from beg measures 25 (26-27-28) ins [63.5 (66-68.5-71) cm] ending with **WS** facing for next row.

Shoulder shaping: Cast off 11 (12-13-15) sts beg next and following alt row. Work 1 row even. Cast off rem 12 (13-14-14) sts.

SLEEVES

With A and smaller needles cast on 50 (54-58-62) sts. Work 2 ins [5 cm] in (K2. P2) ribbing as given for Back, ending on a 2nd row and inc 9 (9-11-13) sts evenly across last row. 59 (63-69-75) sts.

Change to larger needles and work Chart III in stocking st to end of chart reading **knit** rows from **right** to left and **purl** rows from **left** to right, working 6 st rep 9 (10-11-12) times and noting side incs on 3rd and following 4th rows. 63 (67-73-79) sts.

Next row: (RS). With MC, inc 1 st in first st. K10 (9-10-11). [K2tog. K8 (9-10-11) 5 times]. Inc 1 st in next st. K1. 60 (64-70-76) sts.

Cont in stocking st, inc 1 st each end of needle on every 4th row from previous inc until there are 88 (94-102-110) sts.

Next row: (WS). Purl, inc 7 sts evenly across. 95 (101-109-117) sts.

Work Chart III in stocking st to end of chart, noting side incs. 105 (111-115-123) sts.

Next row: (WS). With A, purl dec 8 sts evenly across. 97 (103-107-115) sts. With A, cont even until work from beg measures 18½ (19-19½-20) ins [47 (48-49.5-51) cm] ending with a WS row. Cast off.

FINISHING

Pin garment pieces to measurements. Cover with a damp cloth leaving to dry.

Neckband: Sew right shoulder seam. With RS work facing, smaller needles and A, pick up and knit 46 (46-46-50) sts down left front neck edge. K1 from safety pin and mark as centre st. Pick up and knit 46 (46-46-50) sts up right front neck edge. Knit across 39 (41-43-43) sts from back st holder dec 1 (3-1-1) st(s) evenly across. 131 (131-135-143) sts.

1st row: (WS). P2. *K2. P2. Rep from * to centre 5 sts. P2tog. P1. P2togtbl. Rib to end of row.

2nd row: Rib to centre 5 sts. P2tog. K1. P2togtbl. Rib to end of row.

3rd row: Rib to centre 5 sts. Sl1. K1. pss0. P1. K2tog. Rib to end of row.

4th row: Rib to centre 5 sts. Sl1. K1. pss0. K1. K2tog. Rib to end of row.

5th row: As 1st row.

6th row: As 2nd row.

7th row: As 3rd row. Cast off. Sew left shoulder and neckband seam.

Place markers on Front and Back side edges 9¾ (10¼-10¾-11) ins [25 (26-27.5-28) cm] down from shoulder seams. Sew in sleeves between markers. Sew side and sleeve seams.

CHART I

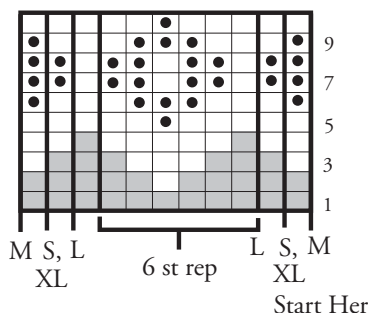
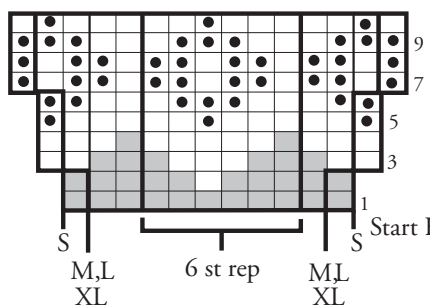


CHART III



Key

- = MC
- = Contrast A
- = Contrast B

CHART II

