



Svetlana Avrakh
Designer



KNIT | SKILL LEVEL: INTERMEDIATE

ABBREVIATIONS

Alt = Alternate

Approx =

Approximately

Beg = Beginning

C2B = Slip next stitch onto cable needle and leave at back of work.

K1tbl, then K1tbl from cable needle

C2F = Slip next stitch onto cable needle and leave at front of work.

K1tbl, then K1tbl from cable needle

Cont = Continue(ity)

Dec = Decrease

Inc = Increase

K = Knit

K1tbl = Knit into back loop of next stitch

Kfb = Increase 1 stitch by knitting into front and back of next stitch

K2tog = Knit next 2 stitches together

MB = Make bobble. [(K1. P1) 3 times. K1] all in next stitch. Slip 6th, 5th, 4th, 3rd, 2nd and 1st stitches separately over 7th stitch. 1 stitch remains – bobble complete.

P = Purl

P2tog = Purl next 2 stitches together

P2togtbl = Purl next 2 stitches together through back loops

P1tbl = Purl into back loop of next stitch

Pat = Pattern

Rem = Remain(ing)

Rep = Repeat

RS = Right side

Ssk = Slip next 2 stitches knitwise one at a time. Pass them back onto left-hand needle, then knit through back loops together

St(s) = Stitch(es)

T2B = Slip next stitch onto cable needle and leave at back of work.

K1tbl, then P1 from cable needle

T2F = Slip next stitch onto cable needle and leave at front of work.

P1, then K1tbl from cable needle

Tog = Together

WS = Wrong side

Yo = Yarn over

MATERIALS

Patons® Highland Bulky™ (3.5 oz/100 g; 83 yds/76 m)

Sizes XS/S M L XL 2/3XL 4/5XL

Wheat (14001) 14 15 16 18 20 23 balls

Sizes U.S. 10½ (6.5 mm) and U.S. 11 (8 mm) knitting needles or size needed to obtain gauge. Cable needle. Size U.S. J/10 (6 mm) crochet hook for belt loops. 5 buttons. Yarn needle.

SIZES

To fit bust measurement

XS/S	28-34" [71-86.5 cm]
M	36-38" [91.5-96.5 cm]
L	40-42" [101.5-106.5 cm]
XL	44-48" [112-122 cm]
2/3XL	48-54" [122-137 cm]
4/5XL	56-62" [142-157.5 cm]

Finished bust

XS/S	40" [101.5 cm]
M	43" [109 cm]
L	46" [117 cm]
XL	51" [129.5 cm]
2/3XL	57" [145 cm]
4/5XL	63" [160 cm]

GAUGE

11 sts and 14 rows = 4" [10 cm] with larger needles in stocking stitch.

INSTRUCTIONS

The instructions are written for smallest size. If changes are necessary for larger size(s) the instructions will be written thus (.). Numbers for each size are shown in the same color throughout the pattern. When only one number is given in black, it applies to all sizes.

Panel Pat A (worked over 6 sts. See chart on page 5.)

1st row: (RS). P2. C2F. P2.
2nd row: K2. (P1tbl) twice. K2.
3rd row: P1. T2B. T2F. P1.
4th row: K1. P1tbl. K2. P1tbl. K1.
5th row: P1. T2F T2B. P1.
6th row: As 2nd row.
 These 6 rows form Panel Pat A.

Panel Pat B (worked over 8 sts. See chart on page 5.)

1st row: (RS). K1tbl. (T2B) twice. P2. MB.
2nd row: K4. P1tbl. K1. (P1tbl) twice.
3rd row: K1tbl. (T2F) twice. P3.
4th row: K3. (P1tbl. K1) twice. P1tbl.
5th row: K1tbl. P1. C2F. T2F. P2.
6th row: K2. P1tbl. K1. (P1tbl) twice. K1. P1tbl.
7th row: K1tbl. P1. K1tbl. (T2F) twice. P1.
8th row: (K1. P1tbl) 4 times.
9th row: (K1tbl. P1) twice. (T2F) twice.
10th row: (P1tbl. K1) twice. (K 1. P1tbl) twice.
11th row: (K1tbl. P1) twice. (T 2 B) twice.
12th row: As 8th row.
13th row: K1tbl. P1. K1tbl. (T2B) twice. P1.

14th row: As 6th row.
15th row: K1tbl. P1. (T2B) twice. P2.
16th row: K3. (P1tbl. K1) twice. P1tbl.
 These 16 rows form Panel Pat B.

Panel Pat C (worked over 8 sts. See chart on page 5.)

1st row: (RS). MB. P2. (T2F) twice. K1tbl.
2nd row: (P1tbl) twice. K1. P1tbl. K4.
3rd row: P3. (T2B) twice. K1tbl.
4th row: (P1tbl. K1) 3 times. K2.
5th row: P2. T2B. C2B. P1. K1tbl.
6th row: P1tbl. K1. (P1tbl) twice. K1. P1tbl. K2.
7th row: P1. (T2B) twice. K1tbl. P 1. K1tbl.
8th row: (P1tbl. K1) 4 times.
9th row: (T2B) twice. (P1. K1tbl) twice.
10th row: (P1tbl. K1) twice. (K1. P1tbl) twice.
11th row: (T 2F) twice. (P1. K1tbl) twice.
12th row: As 8th row.
13th row: P1. (T2F) twice. K1tbl. P1. K1tbl.
14th row: As 6th row.
15th row: P2. (T2F) twice. P1. K1tbl.
16th row: (P1tbl. K1) 3 times. K2.
 These 16 rows form Panel Pat C.

Panel Pat D (worked over 9 sts. See chart on page 5.)

1st row: (RS). P2. T2B. K1tbl. T 2F. P2.
2nd row: K2. (P1tbl. K1) 3 times. K1.
3rd row: P1. T2B. P1. K1tbl. P1. T2F. P1.
4th row: K1. (P1tbl. K2) twice. P1tbl. K1.
5th row: T 2 B. P2. K1tbl. P2. T 2F.
6th row: P1tbl. K2. P1. P1tbl. P1. K2. P1tbl.
 These 6 rows form Panel Pat D.

BACK

With smaller needles and A, cast on **81** (87-93-99-111-117) sts.
1st row: K3. *P3. K3. Rep from * to end of row.
2nd row: P3. *K3. P3. Rep from * to end of row.
 Rep last 2 rows of (K3. P3) ribbing 3 times more (8 rows total).

Change to larger needles and cont in (K3. P3) ribbing until work from beg measures **21½** (22½-23-23-23-23)" [54.5 (57-58.5-58.5-58.5-58.5) cm], ending on a WS row.

Shape armholes: Keeping cont of ribbing, cast off 5 sts beg next **2** (2-2-2-4-4) rows. **71** (77-83-89-91-97) sts.

Next row: (RS). K3. ssk. Pat to last 5 sts. K2tog. K3.

Next row: P3. P2tog. Pat to last 5 sts. P2togtbl. P3.

Rep last 2 rows **1 (2-2-2-3)** time(s) more. **63 (65-71-77-79-81)** sts.

Next row: (RS). K3. ssk. Pat to last 5 sts. K2tog. K3.

Next row: P3. Pat to last 3 sts. P3. Rep last 2 rows 4 times more. **53 (55-61-67-69-71)** sts.

Cont even in ribbing until armhole measures **8 (8½-8½-9-9½-10)" [20.5 (21.5-21.5-23-24.5-25.5) cm]**, ending on a WS row.

Shape back neck and shoulders:

Next row: (RS). Pat **14 (15-17-20-20-21)** sts. K2tog. Turn. Leave rem sts on a st holder.

Next row: P2tog. Pat to end of row.

Next row: Cast off **6 (7-8-9-9-10)** sts. Pat to last 2 sts. K2tog.

Next row: Work even in pat.

Cast off rem **7 (7-8-10-10-10)** sts.

With RS facing, join yarn to rem sts. Cast off **21 (21-23-23-25-25)** sts. Pat to end of row.

Next row: Pat to last 2 sts. P2togtbl.

Next row: ssk. Pat to end of row.

Next row: Cast off **6 (7-8-9-9-10)** sts. Pat to last 2 sts. P2togtbl.

Next row: Work even in pat. Cast off rem **7 (7-8-10-10-10)** sts.

LEFT FRONT

With smaller needles cast on **48 (51-54-57-63-69)** sts.

1st row: (RS). K**0 (3-0-3-3-3)**. (P3. K3) **0 (0-1-1-2-3)** time(s). P2. K1tbl. P2. K2. P2. (K5. P5) twice. K5. P2. K2. P2. K1tbl. (P1. K1tbl) 3 times. K1.

2nd row: (K1. P1tbl) 4 times. K2. P2. K2. (P5. K5) twice. P5. K2. P2. K2. P1tbl. K2. (P3. K3) **0 (0-1-1-2-3)** time(s). P**0 (3-0-3-3-3)**.

3rd to 7th rows: Rep last 2 rows twice more, then 1st row once.

8th row: (WS – inc row). (K1. P1tbl) 4 times. K2. P2. K2. (P5. K2. Kfb. K2) twice. P5. K2. P2. K2. P1tbl. K2. (P3. K3) **0 (0-1-1-2-3)** time(s). P**0 (3-0-3-3-3)**. **50 (53-56-59-65-71)** sts.

Change to larger needles and proceed in pat as follows:

1st row: (RS). K**0 (3-0-3-3-3)**. (P3. K3) **0 (0-1-1-2-3)** time(s). P2. K1tbl. Work 1st row of Panel Pat A. Work 1st row of Panel Pat B. P1. Work 1st row of Panel Pat D. P1. Work 1st row of Panel Pat C. Work 1st row of Panel Pat A. K1tbl. (P1. K1tbl) 3 times. K1.

2nd row: (K1. P1tbl) 4 times. Work 2nd row of Panel Pat A. Work 2nd row of Panel Pat C. K1. Work 2nd row of Panel Pat D. K1. Work 2nd row of Panel Pat B. Work 2nd row of Panel Pat A. P1tbl. K2. (P3. K3) **0 (0-1-1-2-3)** time(s). P**0 (3-0-3-3-3)**.

Panel Pats are now in position.

Keeping cont of Panel Pats, cont even in pat until work from beg measures **21½ (22½-23-23-23-23)" [54.5 (57-58.5-58.5-58.5-58.5) cm]**, ending on a WS row.

Sizes 2/3XL and 4/5XL only:

Shape armhole: Cast off 5 sts at beg of next row. Pat to end of row. Work 1 row even in pat. **(60-66)** sts.

All sizes: Armhole and front shaping: Next row: (RS). Cast off 5 sts (armhole edge). Pat to last 10 sts. P2tog. Pat to end of row.

Next row: Rib across 8 sts. P2tog. Pat to end of row.

Next row: K3. ssk. Pat to last 10 sts. P2tog. Rib to end of row.

Next row: Rib across 8 sts. P2tog. Pat to last 5 sts. P2togtbl. P3.

Rep last 2 rows **1 (2-2-2-2-3)** time(s) more. **35 (34-37-40-41-43)** sts.

Next row: K3. ssk. Pat to last 10 sts. P2tog. Rib to end of row.

Next row: Work even in pat. Rep last 2 rows 3 times more. **27 (26-29-32-33-35)** sts.

Keeping cont of pat, dec 1 st at front edge only (as before) on next and every following alt row until there are **21 (22-24-27-27-28)** sts.

Cont even in pat until armhole measures same length as Back to beg of shoulder shaping, ending on a WS row.

Shape shoulder: Keeping cont of pat, cast off **6 (7-8-9-9-10)** sts at beg of next row. Work 1 row even in pat. Cast off **7 (7-8-10-10-10)** sts. Leave rem 8 sts on a st holder.

Mark positions for 5 buttons on button band, having bottom button 4" [10 cm] up from cast on edge, top button 2 rows below first front dec and rem 3 buttons spaced evenly between.

RIGHT FRONT

Note: Work buttonholes to correspond to button markers on Left Front as follows:

Buttonhole row: (RS). K1. K1tbl. P1. yo. K2tog. Pat to end of row.

With smaller needles cast on **48 (51-54-57-63-69)** sts.

1st row: (RS). K1. (K1tbl. P1) 3 times. K1tbl. P2. K2. P2. (K5. P5) twice. K5. P2. K2. P2. K1tbl. P2. (K3. P3) **0 (0-1-1-2-3)** time(s). **K0 (3-0-3-3-3)**.

2nd row: P**0 (3-0-3-3-3)**. (K3. P3) **0 (0-1-1-2-3)** time(s). K2. P1tbl. K2. P2. K2. (P5. K5) twice. P5. K2. P2. K2. (P1tbl. K1) 4 times.

3rd to 7th rows: Rep last 2 rows twice more, then 1st row once.

8th row: (WS – inc row). P**0 (3-0-3-3-3)**. (K3. P3) **0 (0-1-1-2-3)** time(s). K2. P1tbl. K2. P2. K2. (P5. K2. Kfb. K2) twice. P5. K2. P2. K2. (P1tbl. K1) 4 times. **50 (53-56-59-65-71)** sts. Change to larger needles and proceed in pat as follows:

1st row: (RS). K1. (K1tbl. P1) 3 times. K1tbl. Work 1st row of Panel Pat A. Work 1st row of Panel Pat C. Pl. Work 1st row of Panel Pat D. Pl. Work 1st row of Panel Pat B. Work 1st row of Panel Pat A. K1tbl. P2. (K3. P3) **0 (0-1-1-2-3)** time(s). **K0 (3-0-3-3-3)**.

2nd row: P**0 (3-0-3-3-3)**. (K3. P3) **0 (0-1-1-2-3)** time(s). K2. P1tbl. Work 2nd row of Panel Pat A. Work 2nd row of Panel Pat B. K1. Work 2nd row of Panel Pat D. K1. Work 2nd row of Panel Pat C. Work 2nd row of Panel Pat A. (P1tbl. K 1) 4 time s.

Panel Pats are now in position.

Keeping cont of Panel Pats, cont even in pat until work from beg measures **21½ (22½-23-23-23-23)" [54.5 (57-58.5-58.5-58.5-58.5)** cm], ending on a RS row.

Sizes 2/3XL and 4/5XL only:

Shape armhole: Cast off 5 sts at beg of next row. Pat to end of row. Work 1 row even in pat. **(60-66)** sts.

All sizes: Armhole and front shaping:

Next row: (WS). Cast off 5 sts (armhole edge). Pat to last 10 sts. P2tog. Rib to end of row.

Next row: Rib across 8 sts. P2tog. Pat to end of row.

Next row: P3. P2tog. Pat to last 10 sts. P2tog. Rib to end of row.

Next row: Rib across 8 sts. P2tog. Pat to last 5 sts. K2tog. K3.

Rep last 2 rows **1 (2-2-2-2-3)** time(s) more. **35 (34-37-40-41-43)** sts.

Next row: Work even in pat.

Next row: (RS). Rib across 8 sts. P2tog. Pat to last 5 sts. K2tog. K3. Rep last 2 rows 3 times more. **27 (26-29-32-33-35)** sts.

Keeping cont of pat, dec 1 st at front edge only (as before) on next and every following alt row until there are **21 (22-24-27-27-28)** sts.

Cont even in pat until armhole measures same length as Back to beg of shoulder shaping, ending on a RS row.

Shape shoulder: Keeping cont of pat, cast off **6 (7-8-9-9-10)** sts at beg of next row. Work 1 row even in pat. Cast off **7 (7-8-10-10-10)** sts. Leave rem 8 sts on a st holder.

SLEEVES

With smaller needles, cast on **33 (33-33-39-39-39)** sts.

Work 8 rows in (K3. P3) ribbing as given for Back.

Change to larger needles and cont in (K3. P3) ribbing, inc 1 st each end of needle on next and every following 4th row to **51 (55-55-59-59-61)** sts, taking inc sts into pat.

Cont even in (K3. P3) ribbing until work from beg measures **18½ (18½-19-19-19-19)" [47 (47-48-48-48-48)** cm], ending on a WS row.

Shape top: Cast off 5 sts beg next **2 (2-2-2-4-4)** rows. **41 (45-45-49-39-41)** sts.

Cast off 3 sts beg next 6 rows, then cast off 4 sts beg next 2 rows.

Cast off rem **15 (19-19-23-13-15)** sts.

BELT

With smaller needles cast on 7 sts.

1st row: (RS). K1. (K1tbl. P1) twice. K1tbl. K1.

2nd row: K1. (P1tbl. K1) 3 times. Rep last 2 rows until Belt measures 64" [162.5 cm], ending on a 2nd row. Cast off in rib.

FINISHING

Block all pieces to measurements. Cover with a damp cloth leaving cloth to dry.

Sew shoulder seams. Sew in sleeves. Sew side and sleeve seams.

Left Front neck extension: With RS facing and larger needles, join yarn to 8 sts on st holder.

1st row: (RS). K1tbl. (P1. K1tbl) 3 times. K1.

2nd row: (K1. P1tbl) 4 times. Rep last 2 rows until extension (when stretched) measures length to fit across back neck edge to center. Cast off in ribbing.

Right Front neck extension: With RS facing and larger needles, join yarn to 8 sts on st holder.

1st row: (RS). K1. (K1tbl. P1) 3 times. K1tbl.

2nd row: (P1tbl. K1) 4 times. Rep last 2 rows until extension (when stretched) measures length to fit across back neck edge to center. Cast off in ribbing.

Sew ends of extensions tog. Sew sides of extensions across back neck edge.

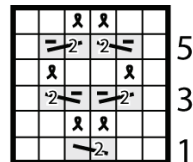
Sew on buttons to correspond to buttonholes.

Belt Loops: Try on Cardigan and mark positions on side seam for belt loops.

Using crochet hook, join yarn with slip stitch at marker. Chain 10. Fasten off leaving 4" [10 cm] end.

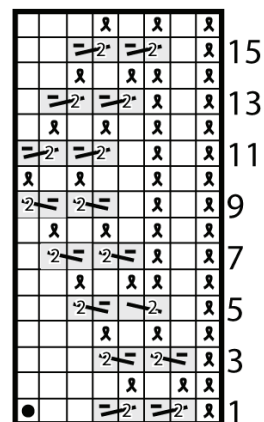
Using yarn tail, sew end of belt loop in position.

Panel Pat A



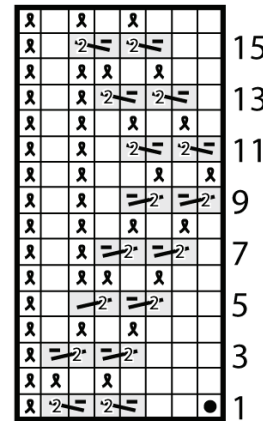
Start Here

Panel Pat B



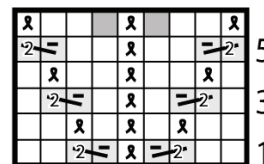
Start Here

Panel Pat C



Start Here

Panel Pat D



Start Here



Key

- = Purl on RS rows. Knit on WS rows.
- = Purl on WS rows.
- = C2B
- = C2F
- = T2B
- = T2F
- = MB
- = K1tbl on RS rows. P1tbl on WS rows

