



KNIT
SKILL LEVEL
INTERMEDIATE

Designed by Edie Eckman



Honeycomb and Braided Cables Square

For Knit Your Cables Afghan

Use this square for making the one-color Knit Your Cables Afghan. Follow our blog by searching RHK0502-019189M for hints on knitting each square of this afghan. Then, if you feel creative, use the stitch pattern for your own unique knit project.

What you will need:
RED HEART® Soft®: 1 ball 9388 Wheat
Susan Bates® Knitting Needles: 5 mm [US 8]
Cable needle, yarn needle
GAUGE: 19 sts = 4" (10 cm); 23 rows = 4" (10 cm) in Stockinette st (knit on right side, purl on wrong side). **CHECK YOUR GAUGE.** Use any size needles to obtain the gauge.



RED HEART® Soft®, Art. E728 available in 5 oz (141 g), 256 yd (234 m) balls

Square measures 10" (25.5 cm) square.

Special Abbreviations

2/2 LC (2 over 2 Left Cross): Slip next 2 sts to cable needle and hold in front, k2, k2 from cable needle.

2/2 RC (2 over 2 Right Cross): Slip next 2 sts to cable needle and hold in back, k2, k2 from cable needle.

k1-tbl: Knit 1 stitch through back loop.

Special Technique

Cable Cast On = Place a slip knot on left needle, insert right needle into stitch on left needle as if to knit, pull loop through and place on left needle (2 sts on left needle), *insert needle between first 2 stitches on left needle, pull loop through and place on left needle; repeat from * until the required number of stitches are on the left needle.

SQUARE I

Cable cast on 56 sts.

Rows 1 and 5 (right side): P2, k1-tbl, p2, k6, p2, k1-tbl, p2, k24, p2, k1-tbl, p2, k6, p2, k1-tbl, p2.

Row 2 and all wrong side rows: K2, p1, k2, p6, k2, p1, k2, p24, k2, p1, k2, p6, k2, p1, k2.

Row 3: P2, k1-tbl, p2, 2/2 RC, k2, p2, k1-tbl, p2, [2/2 RC, 2/2 LC] 3 times, p2, k1-tbl, p2, 2/2 RC, k2, p2, k1-tbl, p2.

Row 7: P2, k1-tbl, p2, k2, 2/2 LC, p2, k1-tbl, p2, [2/2 LC, 2/2 RC] 3 times, p2, k1-tbl, p2, k2, 2/2 LC, p2, k1-tbl, p2.

Row 8: K2, p1, k2, p6, k2, p1, k2, p24, k2, p1, k2, p6, k2, p1, k2.

Repeat Rows 1-8 six more times. Bind off in pattern on right side.

Finishing

Block piece to approximately 10" (25.5 cm) square.

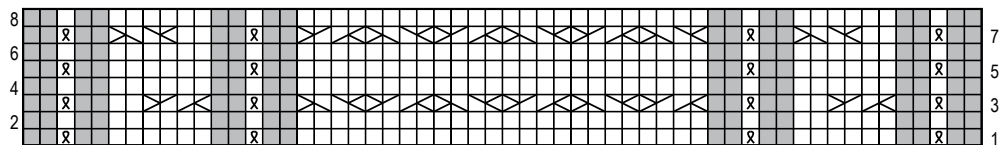
Weave in ends.

ABBREVIATIONS

k = knit; **p** = purl; **st(s)** = stitch(es); **[]** = work directions in brackets the number of times specified; ***** = repeat whatever follows the * as indicated.

KEY

- k on RS, p on WS
- p on RS, k on WS
- k tbl
- 1/1 RC
- 1/1 LC
- 2/1 LPC
- 2/1 RPC
- 1/2 LPC
- 1/2 RPC
- 2/2 RC
- 2/2 LC
- 3/1 LPC
- 3/1 RPC
- 3/3 RC
- 3/3 LC



SHOP KIT