



CROCHET | SKILL LEVEL: **EASY**

## ABBREVIATIONS

**Approx** = Approximately

**Beg** = Begin(ning)

**Ch** = Chain(s)

**Cont** = Continue(ity)

**Dc** = Double crochet

**Hdc** = Half double crochet

**Hdcfp** = Yoh and draw up a loop around post of next st at front of work inserting hook from right to left. Yoh and draw through all loops on hook

**Pat** = Pattern

**PM** = Place marker

**Rem** = Remaining

**Rep** = Repeat

**RS** = Right side

**Sc** = Single crochet

**Sp(s)** = Space(s)

**St(s)** = Stitch(es)

**WS** = Wrong side

**Yoh** = Yarn over hook

## MEASUREMENTS

Approx 60" [152.5 cm] wide x 30" [76 cm] deep.

## GAUGE

12 sc and 15 rows = 4" [10 cm].

## INSTRUCTIONS

### Notes:

- Ch 2 at beg of row does not count as hdc. Move marker to every center ch-2 sp.
- Ch 3 at beg of row outs as dc.

Ch 4. See diagram on page 2.

**1st row:** (RS). 4 dc in 4th ch from hook. Turn. 5 dc.

**2nd row:** Ch 2. 2 hdc in first dc. 1 hdc in next dc. (1 hdc. Ch 2. 1 hdc) in next dc. PM on ch-2 sp for center. 1 hdc in next dc. 2 hdc in last dc. Turn.

**3rd row:** Ch 2. 2 hdc in first hdc. 1 hdc in each of next 3 hdc. (1 hdc. Ch 2. 1 hdc) in next ch-2 sp. 1 hdc in each of next 3 hdc. 2 hdc in last hdc. Turn.

**4th row:** Ch 3. 1 dc in first hdc. Ch 1. (1 dc in next hdc. Ch 1. Skip next hdc) twice. 1 dc in next hdc. Ch 1. (1 dc. Ch 2. 1 dc) in next ch-2 sp. Ch 1. (1 dc in next hdc. Ch 1. Skip next hdc) twice. 1 dc in next hdc. Ch 1. 2 dc in last hdc. Turn.

## MATERIALS

**Caron® Cotton Cakes™** (8.8 oz/250 g; 530 yds/485 m)

Sunset Dreams (57011)      **2 balls**

Size U.S. J/10 (6 mm) crochet hook **or size needed to obtain gauge.**  
Stitch marker.

**5th row:** Ch 3. 1 dc in first dc. 1 dc in each st to center ch-2 sp. (1 dc. Ch 2. 1 dc) in next ch-2 sp. 1 dc in each st to last ch 3. 2 dc in top of ch 3. Turn.

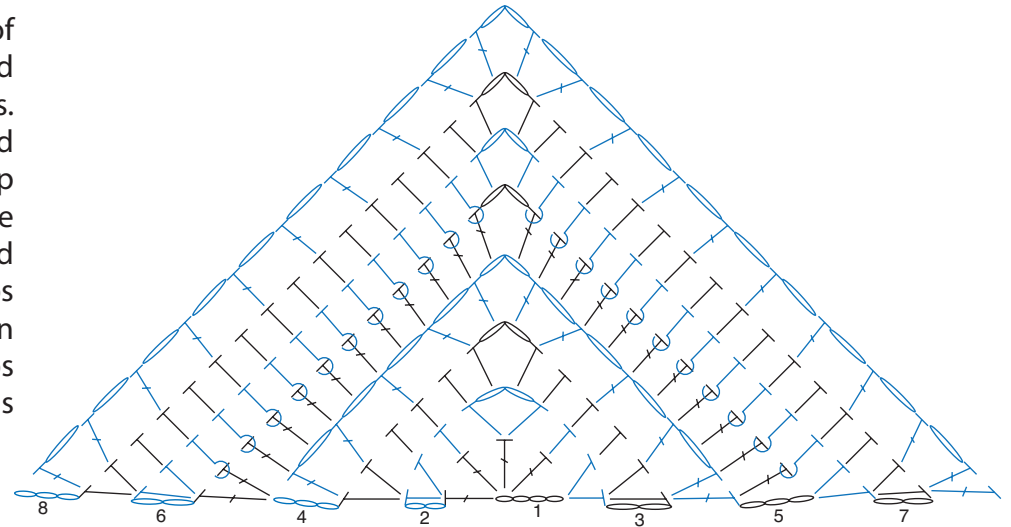
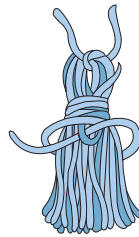
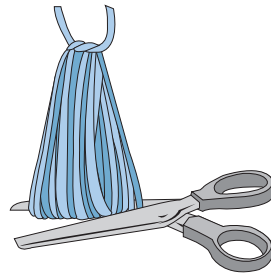
**6th row:** Ch 2. 2 hdc in first dc. 1 hdcfp around each dc to center ch-2 sp. (1 hdc. Ch 2. 1 hdc) in ch-2 sp. 1 hdcfp around each dc to last dc. 2 hdc in last dc. Turn.

**7th row:** Ch 2. 2 hdc in first hdc. 1 hdc in each st to center ch-2 sp. (1 hdc. Ch 2. 1 hdc) in next ch-2 sp. 1 hdc in each st to last hdc. 2 hdc in last hdc. Turn.





**8th row:** Ch 3 (counts as dc). 1 dc in first hdc. Ch 1. \*1 dc in next hdc. Ch 1. Skip next st. \* Rep from \* to \* to last dc before ch-2 sp. 1 dc in next hdc. Ch 1. (1 dc. Ch 2. 1 dc) in next ch-2 sp. Ch 1. Rep from \* to \* last 2 hdc. 1 dc in next hdc. Ch 1. 2 dc in last hdc. Turn.

Rep 5th to 8th rows until Shawl from beg ch measures approx 30" [76 cm], ending on 6th row. Fasten off.

**Tassels:** (make 3). Cut a piece of cardboard 6" [15 cm] wide. Wind yarn around cardboard 20 times. Break yarn leaving a long end and thread end through needle. Slip needle through all loops and tie tightly. Remove cardboard and wind yarn tightly around loops 1" [2.5 cm] below fold. Fasten securely. Cut through rem loops and trim ends evenly. Sew Tassels to each point of Shawl.



### STITCH KEY

-  = chain (ch)
-  = half double crochet (hdc)
-  = double crochet (dc)
-  = front post half double crochet (hdcfp)

