



MATERIALS

Red Heart® Super Saver® (7 oz/198 g; 364 yds/333 m)

Contrast A Soft Navy (0387) **2 balls**

Contrast B Light Blue (0381) **2 balls**

Contrast C Aran (0313) **2 balls**

Contrast D Light Periwinkle (0347) **3 balls**

Size U.S. I/9 (5.5 mm) crochet hook **or size needed to obtain gauge.** Stitch marker. Yarn needle. Cardboard pieces 4" [10 cm] and 8" [20.5 cm] wide for tassels.



CROCHET | SKILL LEVEL: **EASY**

ABBREVIATIONS

Approx = Approximately

Beg = Begin(ing)

Ch = Chain(s)

Cluster = (Yoh and draw up a loop in next stitch. Yoh and draw through 2 loops on hook) twice. Yoh and draw through all loops on hook.

Cont = Continue(ity)

Dc = Double crochet

Pat = Pattern

Rem = Remain(ing)(s)

Rep = Repeat

Rnd(s) = Round(s)

RS = Right side

Sc = Single crochet

Sp = Space

St(s) = Stitch(es)

WS = Wrong side

Yoh = Yarn over hook

MEASUREMENTS

Approx 50" x 57" [127 x 145 cm].

GAUGE

12 sc and 13 rows = 4" [10 cm].

INSTRUCTIONS

Stripe Pat I

With A, work 4 rows.

With B, work 4 rows.

With A, work 4 rows.

With C, work 4 rows.

With B, work 4 rows

With C, work 4 rows.

These 24 rows form Stripe Pat I.

Stripe Pat II

With C, work 4 rows.

With B, work 4 rows.

With C, work 4 rows.

With A, work 4 rows.

With B, work 4 rows

With A, work 4 rows.

These 24 rows form Stripe Pat II.

BLANKET

Note: Ch 3 at beg of row counts as dc throughout.

With A, ch 148. See diagram on page 3.

1st row: (RS). 1 sc in 2nd ch from hook. *Ch 1. Skip next ch. 1 sc in next ch. Rep from * to end of ch. 147 sts. Turn.

2nd row: Ch 3. *Cluster in next ch-1 sp. Ch 1. Cluster in next ch-1 sp. Rep from * to last sc. 1 dc in last sc. Turn.

3rd row: Ch 1. 1 sc in first dc. *Ch 1. Skip next Cluster. 1 sc in next ch-1 sp. Rep from * to last 2 sts. Ch 1. Skip next cluster. 1 sc in last dc. Turn.

First 2 rows of Stripe Pat I are complete.

Rep last 2 rows for Cluster Stripe Pat until 24 rows of Stripe Pat I are complete.

Next row: With C, ch 1. 1 sc in first sc. *1 sc in next ch-1 sp. 1 sc in next sc. Rep from * to last 2 sts. Skip next ch-1 sp. 1 sc in last sc. Turn. 146 sc.

Break C, join D.

With D, proceed in Diamond Pat as follows (see diagram on page 3):

1st row: (RS). Ch 4 (counts as dc. Ch 1). Skip first sc. 1 dc in each of next 14 sc. *Ch 2. Skip next 2 sc. 1 dc in each of next 14 sc. Rep from * to last 2 sc. Ch 1. 1 dc in last sc. Turn.

2nd row: Ch 3. 1 dc in first ch-1 sp. Ch 2. Skip next 2 dc. 1 dc in each of next 10 dc. Ch 2. Skip next 2 dc. *2 dc in next ch-2 sp. Ch 2. Skip next 2 dc. 1 dc in each of next 10 dc. Ch 2. Skip next 2 dc. Rep from * to last (Ch-1 sp. dc). 1 dc in next ch-1 sp. 1 dc in last dc. Turn.

3rd row: Ch 3. 1 dc in next dc. 2 dc in next ch-2 sp. Ch 2. Skip next 2 dc. *1 dc in each of next 6 dc. Ch 2. Skip next 2 dc. 2 dc in next ch-2 sp. 1 dc in each of next 2 dc. 2 dc in next ch-2 sp. Ch 2. Skip next 2 dc. Rep from * to last ch-2 sp and 2 dc. 2 dc in next ch-2 sp. 1 dc in each of last 2 dc. Turn.

4th row: Ch 3. 1 dc in each of next 3 dc. 2 dc in next ch-2 sp. Ch 2. Skip next 2 dc. 1 dc in each of next 2 dc. Ch 2. 2 dc in next ch-2. *1 dc in each of next 6 dc. 2 dc in next ch-2 sp. Ch 2. Skip next 2 dc. 1 dc in each of next 2 dc. Ch 2. Skip next 2 dc. 2 dc in next ch-2 sp. Rep from * to last 4 dc. 1 dc in each of last 4 dc. Turn.

5th row: Ch 3. 1 dc in each of next 5 dc. 2 dc in next ch-2 sp. Ch 2. Skip next 2 dc. 2 dc in next ch-2 sp. *1 dc in each of next 10 dc. 2 dc in next ch-2 sp. Ch 2. Skip next 2 dc. 2 dc in next ch-2 sp. Rep from * to

last 6 dc. 1 dc in each of last 6 dc. Turn.

6th row: Ch 3. 1 dc in each of next 5 dc. Ch 2. Skip next 2 dc. 2 dc in next ch-2 sp. Ch 2. Skip next 2 dc. *1 dc in each of next 10 dc. Ch 2. Skip next 2 dc. 2 dc in next ch-2 sp. Ch 2. Skip next 2 dc. Rep from * to last 6 dc. 1 dc in each of last 6 dc. Turn.

7th row: Ch 3. 1 dc in each of next 3 dc. Ch 2. Skip next 2 dc. 2 dc in next ch-2 sp. 1 dc in each of next 2 dc. 2 dc in next ch-2 sp. Ch 2. Skip next 2 dc. *1 dc in each of next 6 dc. Ch 2. Skip next 2 dc. 2 dc in next ch-2 sp. 1 dc in each of next 2 dc. 2 dc in next ch-2 sp. Ch 2. Skip next 2 dc. Rep from * to last 4 dc. 1 dc in each of last 4 dc. Turn.

8th row: Ch 3. 1 dc in next dc. Ch 2. Skip next 2 dc. 2 dc in next ch-2 sp. 1 dc in each of next 6 dc. 2 dc in next ch-2 sp. Ch 2. Skip next 2 dc. *1 dc in each of next 2 dc. Ch 2. Skip next 2 dc. 2 dc in next ch-2 sp. 1 dc in each of next 6 dc. 2 dc in next ch-2 sp. Ch 2. Skip next 2 dc. rep from * to last 2 dc. 1 dc in each of last 2 dc. Turn.

9th row: Ch 4 (counts as dc. Ch 1). 2 dc in next ch-2 sp. 1 dc in each of next 10 dc. 2 dc in next ch-2 sp.

*Ch 2. Skip next 2 dc. 2 dc in next ch-2 sp. 1 dc in each of next 10 dc. 2 dc in next ch-2 sp. Rep from * to last 2 dc. Ch 1. Skip next dc. 1 dc in last dc. Turn.

Rep 2nd to 9th rows until Diamond Pat section from marked row measures approx 36" [91.5 cm], ending on a 9th row of pat.

Next row: (WS). Ch 1. 1 sc in first dc. Skip next ch-1 sp. 1 sc in each of next 14 dc. *2 sc in next ch-2 sp. 1 sc in each of next 14 dc. Rep from * to last (Ch-1. 1 dc). 1 sc in next ch-1 sp. 1 sc in last dc. Turn. Break D, join C.

Next row: (RS). With C, ch 1. 1 sc in first sc. *Ch 1. Skip next sc. 1 sc in next sc. Rep from * to end of row. Turn.

Beg working Stripe Pat II in Cluster Stripe Pat as before.

Fasten off at end of last row.

EDGING

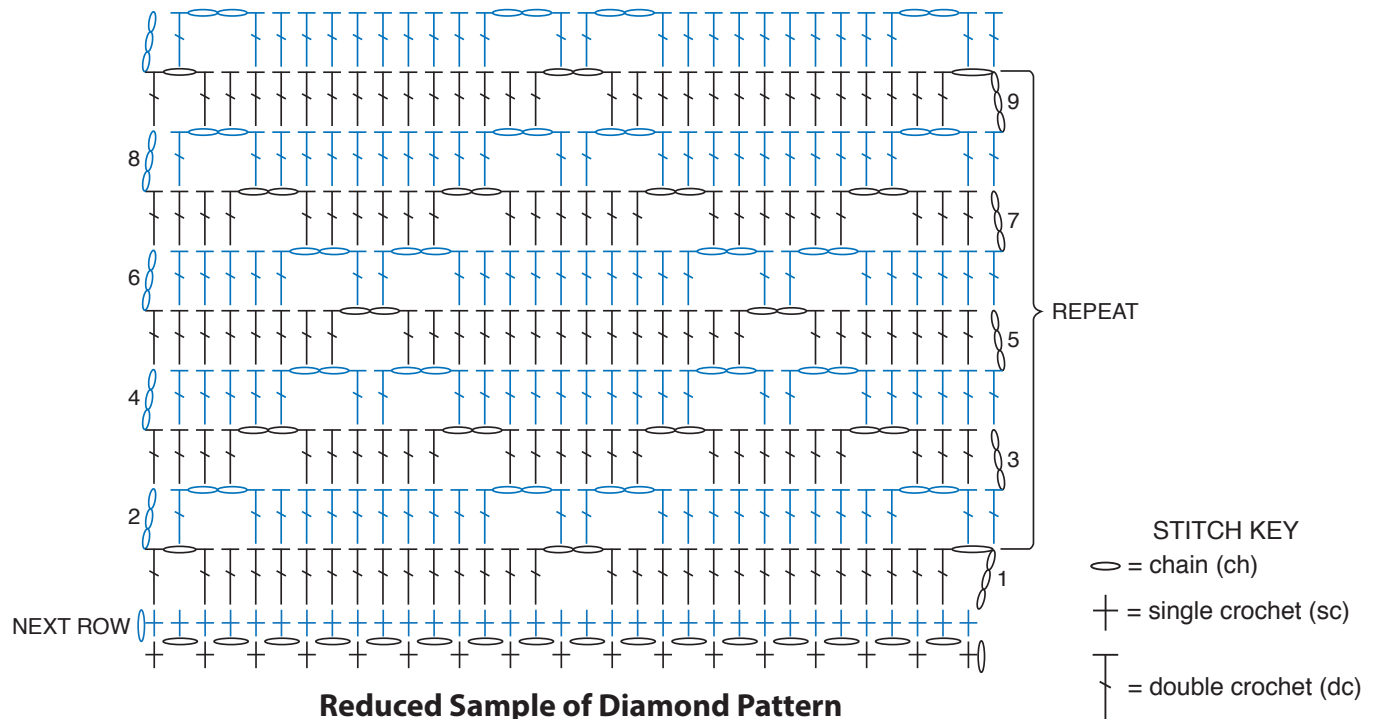
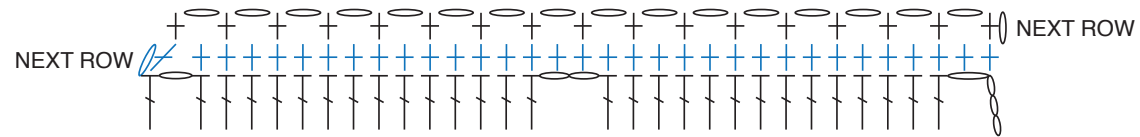
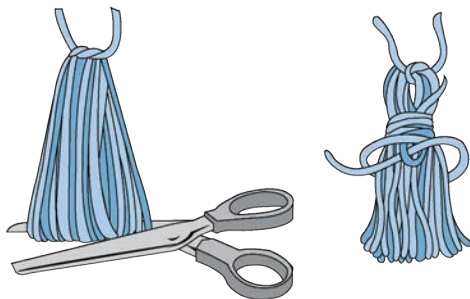
1st rnd: (RS). Join A with sl st to any corner. Ch 1. Work 1 rnd of sc evenly around all edges, working 3 sc in each corner. Join B with sl st to first sc.

2nd rnd: With B, ch 1. 1 sc in each sc around, working 3 sc in each center sc of corners. Join A.

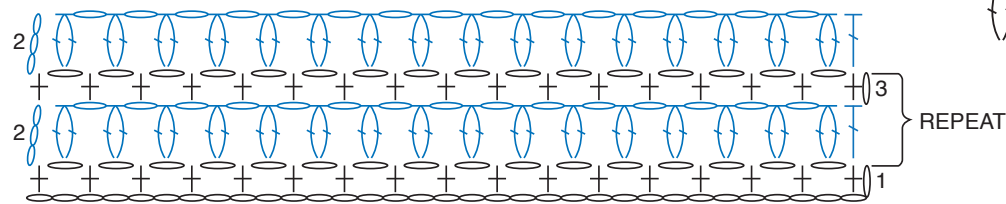
3rd rnd: With A, as 2nd rnd. Fasten off.

Tassels (make 4 each in B, C and D)
Wrap yarn around 4" [10 cm] piece of cardboard 30 times. Tie securely at one end. Cut across other end and trim evenly. Wrap yarn 6 times around tassel 1½" [4 cm] from tied end - fasten securely. Attach Tassels in rows to center of Diamond Pat as shown in picture.

Corner Tassels (make 4)
Wrap A around 8" [20.5 cm] piece of cardboard 50 times. Tie securely at one end. Cut across other end and trim evenly. Wrap B 6 times around tassel 1½" [4 cm] from tied end - fasten securely. Attach one Corner Tassel to each corner of Blanket.



Reduced Sample of Diamond Pattern



Reduced Sample of Cluster Stripe Pattern