



 CROSS STITCH  
SKILL LEVEL: **EASY**

### MEASUREMENT

**Stitch count:** 71 W x 50 H

On 14 count aida design area will be approximately 5" x 3½" (12.5cm x 9cm).

### INSTRUCTIONS

**Note:** On 14 count Aida use 2 strands. Split the length of thread before beginning each color.

1. Download Stitch Chart.
2. Determine the center of your fabric. This is where you will begin stitching. Place the fabric in an embroidery hoop.
3. One square on the chart represents one stitch of the design.
4. Thread the needle with 2 strands of embroidery floss. Begin at the center square of the chart.
5. Work **right** to left or **left** to right always crossing the stitch in the same direction. Work stitches of the same color close together and do not move to areas that are more than an inch away.

## Featuring Anchor® Embroidery Floss Spools

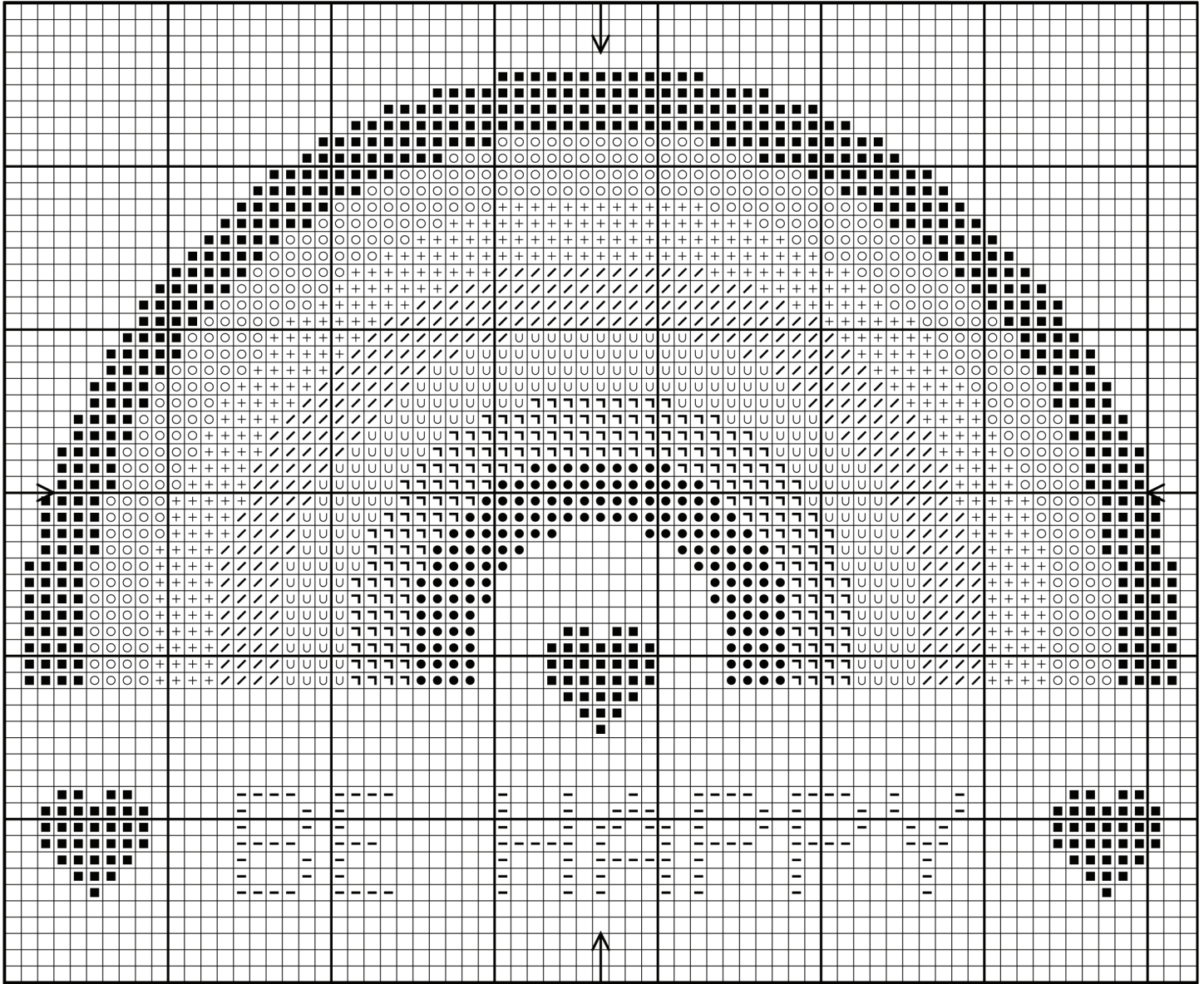
Cross stitch this cheery message- It's sure to brighten someone's day! Anchor® Embroidery Floss on Spools helps keep your floss neat and tidy.

### MATERIALS

**Anchor® Embroidery Floss Spools:** 1 of each color



Anchor® Embroidery Hoop. 14 ct Aida. Tapestry Needle No. 24.



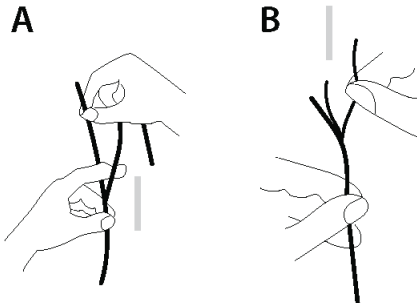
### KEY

Symbol	Color No.
	0410
	0047
	0295
	0204
	0314
	0109
	1090
	1034

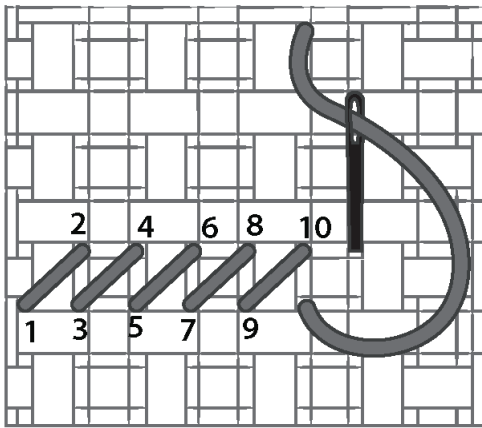
## STITCHES

**TIP:** To separate the floss into strands, cut an 18" length. Hold one end and run the finger of your opposite hand between the strands allowing them to untwist. Thread the needle.

### SEPARATING THE FLOSS STRANDS



CROSS STITCH DIAGRAM



CROSS STITCH BACKSTITCH

