



CROCHET | SKILL LEVEL: **INTERMEDIATE**

ABBREVIATIONS

Approx = Approximately

Beg = Begin(ning)

Ch = Chain(s)

Cont = Continue

Dc = Double crochet

Dcbp = Yoh and draw up a loop around post of next stitch at back of work, inserting hook from right to left. (Yoh and draw through 2 loops on hook) twice.

Dcfp = Yoh and draw up a loop around post of next stitch at front of work, inserting hook from right to left. (Yoh and draw through 2 loops on hook) twice.

Dtrfp = (Yoh) 3 times and draw up a loop around post of indicated stitch at front of work, inserting hook from right to left. (Yoh and draw through 2 loops on hook) 4 times.

Hdc = Half double crochet

Pat = Pattern

Rep = Repeat

Rnd(s) = Round(s)

RS = Right side

Sc = Single crochet

Sl st = Slip stitch

St(s) = Stitch(es)

Yoh = Yarn over hook

MEASUREMENTS

Approx 40" [101.5 cm] wide x 44" [112 cm] long.

GAUGE

6 sc and 7 rows = 4" [10 cm].

INSTRUCTIONS

Note: Ch 2 at beg of rows **does not** count as st.

Ch 66. See diagram on page 3.

1st row: (RS). 1 dc in 4th ch from hook (counts as 2 dc). 1 dc in each ch to end of ch. Turn. 64 dc.

2nd row: Ch 2. 1 hdc in each of next 4 dc. *1 dcbp around each of next 2 dc. 1 hdc in each of next 3 dc. dcbp around each of next 10 dc. 1 hdc in each of next 3 dc. Rep from * twice more. 1 dcbp around each of next 2 dc. 1 hdc in each of last 4 dc. Turn.



MATERIALS

Bernat® Baby Blanket Dappled™ (10.5 oz/300 g; 220 yds/201 m)
Skipping Stone (15001) **4 balls**

Size U.S. N/15 (10 mm) crochet hook **or size needed to obtain gauge.**

Proceed in pat as follows:

1st row: Ch 2. 1 hdc in each of next 4 hdc. 1 dcfp around each of next 2 sts. *1 hdc in each of next 3 hdc. dcfp around each of next 10 sts. 1 hdc in each of next 3 hdc. 1 dcfp around each of next 2 sts. Rep from * twice more. 1 hdc in each of last 4 hdc. Turn.

2nd row: Ch 2. 1 hdc in each of next 4 hdc. *1 dcbp around each of next 2 sts. 1 hdc in each of next 3 hdc. 1 dcbp around each of next 10 sts. 1 hdc in each of next 3 hdc. Rep from * twice more. 1 dcbp around each of next 2 sts. 1 hdc in each of last 4 hdc. Turn.

3rd row: Ch 2. 1 hdc in each of next 4 dc. 1 dcfp around each of next 2 sts. *1 hdc in each of next 3 hdc. Skip next 5 sts. (1 dtrfp around next st) 5 times. *Working behind sts just worked*, 1 dtrfp around each of 5 skipped sts. 1 hdc in each of next 3 hdc. 1 dcfp around each of next 2 sts. Rep from * twice more. 1 hdc in each of last 4 hdc. Turn.

4th and 6th rows: As 2nd row.

5th and 7th rows: As 1st row.

8th row: As 2nd row.

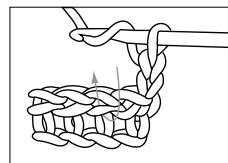
These 8 rows form Cable Pat.

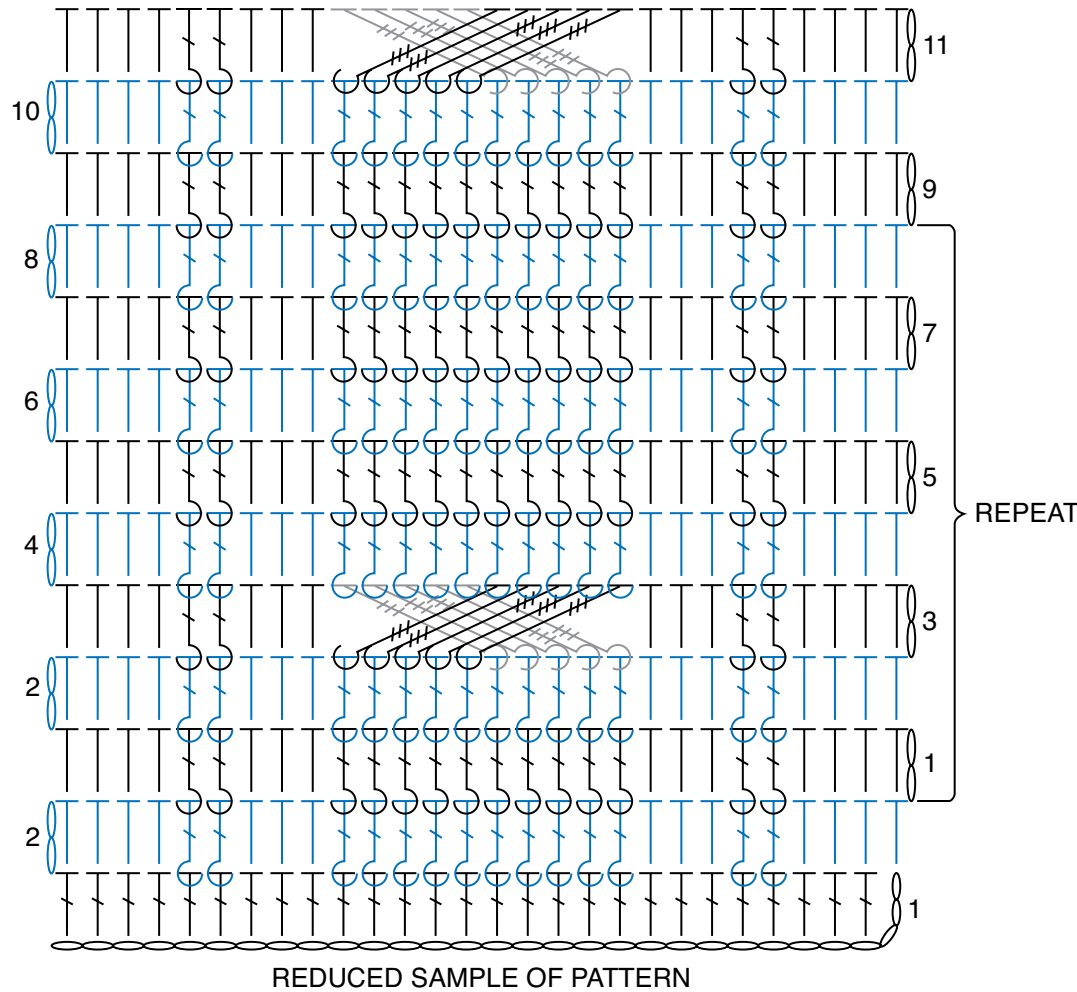
Cont in Cable Pat until work from beg measures approx 42" [106.5 cm], ending on a 6th row.




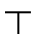

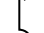
Do not fasten off at end of last row.

Border: 1st rnd: (RS). Ch 2. 1 hdc in each st across. 3 hdc in corner. Work 70 hdc evenly down left side edge of Blanket. 3 hdc in corner. Work 64 hdc evenly along bottom edge of Blanket. 3 hdc in corner. Work 70 hdc evenly up right side edge of Blanket. 3 hdc in last corner. Join with sl st to first hdc.

2nd and 3rd rnds: Ch 2. Work 1 hdc into horizontal bar created below st in previous row (bar is below loops normally worked – see diagram which shows WS of work) in each hdc around, working 3 hdc in each center hdc of corners. Join with sl st to first hdc. Fasten off at end of last rnd.





- STITCH KEY**
-  = chain (ch)
 -  = half double crochet (hdc)
 -  = double crochet (dc)
 -  = back post double crochet (dcbp)
 -  = front post double crochet (dcfp)
 -  = front post double treble crochet (dtrfp)