



Emily Berney
Designer



KNIT | SKILL LEVEL: INTERMEDIATE

ABBREVIATIONS

Approx = Approximately

Beg = Begin(ning)

C2B = Slip next stitch onto cable needle and leave at back of work. K1, then K1 from cable needle

C2F = Slip next stitch onto cable needle and leave at front of work. K1, then K1 from cable needle

Cont = Continue

K = Knit

K2tog = Knit next 2 stitches together

P = Purl

Pat = Pattern

PM = Place marker

Rem = Remain(ing)(s)

Rep = Repeat

Rnd(s) = Round(s)

RS = Right side

SI1 = Slip next stitch knitwise

St(s) = Stitch(es)

Tog = Together

WS = Wrong side

MATERIALS

Patons® Lincoln Fog™ (3.5 oz/100 g; 190 yds/174 m)

Silver (12007)

2 balls

Size U.S. 9 (5.5 mm) circular knitting needle 16" [40.5 cm] long **or size needed to obtain gauge.** Cable needle. Stitch marker.

MEASUREMENTS

Approx 20" [51 cm] circumference x 25" [63.5 cm] long, including collar.

GAUGE

15 sts and 20 rows = 4" [10 cm] in stocking st.

INSTRUCTIONS

Collar

Cast on 76 sts. Join for working in rnd, PM on first st.

1st rnd: *K1. Sl1. Rep from * around.

2nd rnd: *P1. K1. Rep from * around.

Rep 1st and 2nd rnds until work from beg measures 10" [25.5 cm]. Fold work in half to inside with WS tog.

Next rnd: *Pick up st from cast on edge. K2tog (next st on needle and picked up st). Rep from * to join cast on edge, creating double Collar.

Next rnd: Purl.

Next rnd: Knit.

Rep last 2 rnds twice more.

Next rnd: Cast off 21 sts. Purl to last 21 sts. Cast off rem 21 sts. Break yarn.

Scarf

With RS facing, join yarn to 1st rem st on needle.

Cont as follows, working back and forth across needle in rows:

1st row: (K4. P2) 5 times. K4. 34 sts.

2nd row: K6. (P4. K2) 4 times. K4.

3rd row: K4. (P2. C2B. C2F) 4 times. P2. K4.

4th row: As 2nd row.

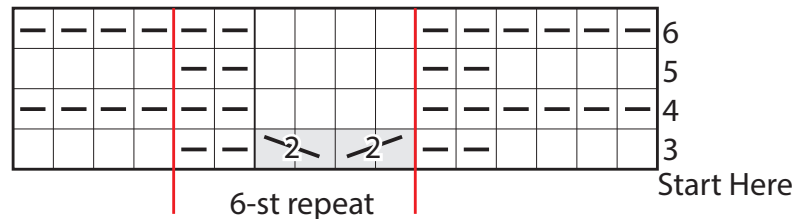
5th row: (K4. P2) 5 times. K4.

6th row: As 2nd row.

Rep 3rd to 6th rows for pat until work from bottom of Collar measures approx 20" [51 cm], ending on a WS row.

Knit 4 rows (garter st).


Cast off.



 = Knit on RS rows. Purl on WS rows.

 = Purl on RS rows. Knit on WS rows.

 = C2F

 = C2B

