



Technique:	Piecing, Sewing
Designed By:	Linda Turner Griepentrogil
Skill Level:	Intermediate
Crafting Time:	An evening
Finished size:	12" (30.48cm) tall

## Featuring Dual Duty XP® All-purpose Thread

Who doesn't love candy corn? It's an iconic symbol of Halloween, but also of fall in general. This cone shaped hanger is perfect to fill with flowers for the door, or candy for a fun table decoration.

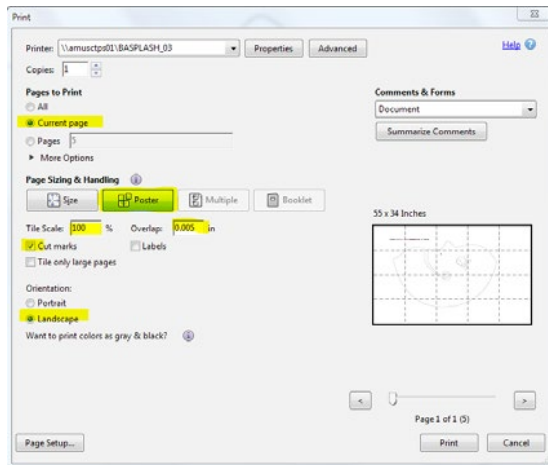
## Supplies

- **Coats Dual Duty XP® All-purpose Thread, 7250 Sun Yellow, 7640 Orange, 100 White or best match**
  - ½ yd (45.72cm) yellow cotton fabric
  - ¼ yd (22.86cm) each white and orange cotton fabrics\*
  - ½ yd (45.72cm) batting
  - ½ yd (45.72cm) medium-weight fusible interfacing
  - 6" (15.24cm) grosgrain ribbon, ¼" (.64cm)
  - Additional Requirements
  - Pattern tracing paper
  - Temporary spray adhesive
  - Cone templates provided
- \*a fat quarter can be substituted for this yardage

## Creating the Template

**Create template:** We have given you two options for doing this. On page 4, the design is shown on a grid which may be used to transfer the drawing to the 1" grid fabric. Page 6 is a template that you may print with your printer, then tape the pages together.

**Printing template:** Make sure to set printer for Tiled or Poster setting and check Actual size or print at 100%. Here is an example of what your settings will look like:



## Cutting

### From the yellow fabric, cut:

- 1 yellow corn section, using the template provided
- 1 lining, using the template provided

### From the orange fabric, cut:

- 1 orange corn section, using the template provided

### From the white fabric, cut:

- 1 white corn section, using the template provided

### From the fusible interfacing, cut:

- 1 lining, using the template provided

## Preparing the Lining

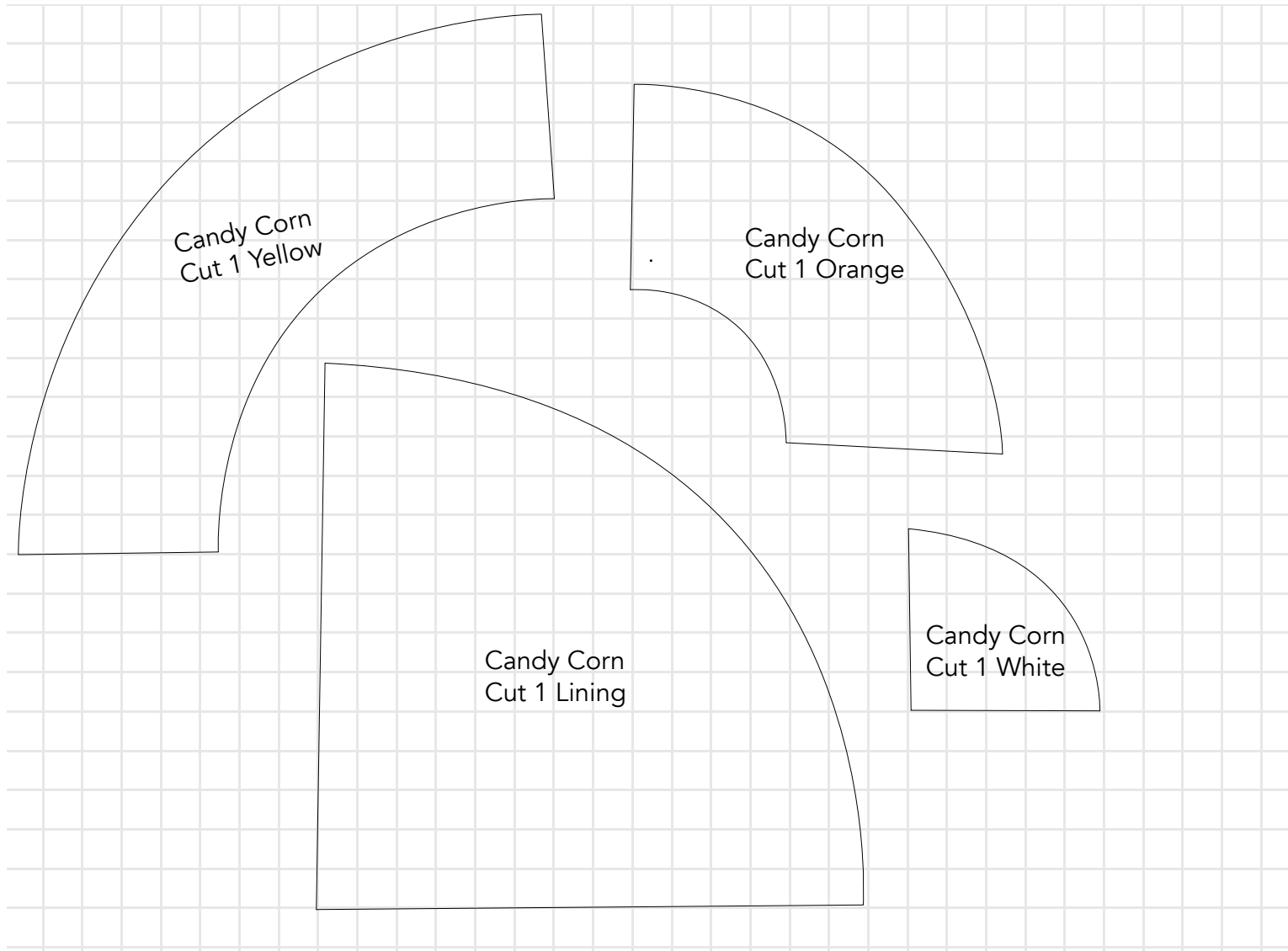
1. Following the manufacturer's instructions, fuse interfacing to the back of the yellow lining piece.

## Assembling the Candy Corn

**Note:** Seam allowance is 1/4" (.64cm).

1. Pin-mark the upper center of the white section, upper and lower centers of the orange section, and the lower center of the yellow section. These will help with sewing together the opposing curves.
2. Matching centers and ends of each section, sew the sections together in order, easing curves as needed. Press the seam allowances toward the darker fabric.
3. Using temporary spray adhesive, layer the pieced corn over a square of batting. Topstitch on both sides of the piecing seams using matching thread. Trim the batting to match the pieced corn.
4. Matching the horizontal seams, sew the center back seam. Trim bulk from the point and press the seam allowances open. Turn the cone right side out.

5. Sew the center back seam on the lining, leaving an opening for turning. Press the seam allowances open, but do not turn the lining right side out.
6. With right sides together, slide the lining over the corn cone, matching the center back seam and upper edges. Sew around the upper edge, and press seams open.
7. Turn the cone right side out and stitch the lining opening closed. Press the upper edge firmly, tucking the lining into the cone. Topstitch around the upper edge to hold the lining in place.
8. Fold the ribbon in half to form a hanger loop. Pin it to the cone center back seam with the raw edges 1 1/2" (3.81cm) from the cone upper edge. Zigzag across the cut ends, then straight stitch the ribbon in place along the previous upper topstitching line.



1 - .25" square = 1inch

Print this page tiled on 8.5" x 11" paper tiled and tape together to make a full size template

