

# Patons® Grace



## Patons® Grace FLORAL SHAWL

### MEASUREMENT

Approx 26 ins [66 cm] wide x 70 ins [178 cm] long

### MATERIALS

Patons Grace (50 g) (60005 Snow)  
13 balls  
Sizes 3.50 mm (U.S. E or 4) and  
4.50 mm (U.S. 7) crochet hook **or**  
size needed to obtain tension.

### TENSION

2 flowers = 3½ ins [9.5 cm] wide  
with larger hook in pat.

## INSTRUCTIONS

With larger hook, ch 135.

**1st row:** (RS). 2 dc in 4th ch from hook. Miss next 2 ch. Ss in next ch. Ch 7. Miss next 3 ch. Ss in next ch. \*Ch 3. Miss next 2 ch. (Ss. Ch 3. 2 dc. Ch 3. Ss) all in next ch. Ch 3. 2 dc in next ch. Miss next 2 ch. Ss in next ch. Ch 7. Miss next 3 ch. Ss in next ch. Rep from \* to last 3 ch. Ch 3. Miss next 2 ch. (Ss. Ch 3. 2 dc) all in last ch. (1st row of Chart is now complete, noting 11 ch repeat will be worked 11 times). **Do not turn.**

**Note:** Refer to Chart to follow instructions for remaining rows. **All** rows will be worked with RS facing. When working 2nd and 4th rows of pat, rotate Shawl so foundation row is at top of work.

**2nd row:** \*Ch 10. Ss in 4th ch from hook to form loop. Ch 3. 2 dc in loop. Ss in ch 7 sp. Ch 3. (Ss. Ch 3. 2 dc) in same loop. Ch 3. Ss in top of ch 3 in row below. Rep from \* across ending with ss in top of ch 3. **Do not turn.**

**3rd row:** Ch 9. \*Ss in top of dc. Ch 3. (Ss. Ch 3. 2 dc. Ch 3. Ss. Ch 3. 2 dc) all in loop. Ss in 3rd ch from loop. Ch 7. Rep from \* across ending with ch 3. (Yoh) 3 times and draw up a loop in dc. (Yoh and draw through 2 loops on hook) 4 times – dtr made. **Do not turn.**

**4th row:** Ch 6. Ss in 3rd ch from hook to form loop. Ch 3. 2 dc in loop. Ch 3. Ss in top of ch 3. \*Ch 10. Ss in 4th ch from hook to form loop. Ch 3. 2 dc in loop. Ss in ch 7 sp. Ch 3. (Ss. Ch 3. 2 dc) in same loop. Ch 3. Ss in top of ch 3. Rep from \* across ending with ch 10. Ss in 4th ch from hook to form loop. Ch 3. 2 dc in loop. Ss in 6th ch of turning ch. Ch 3. Ss in loop. **Do not turn.**

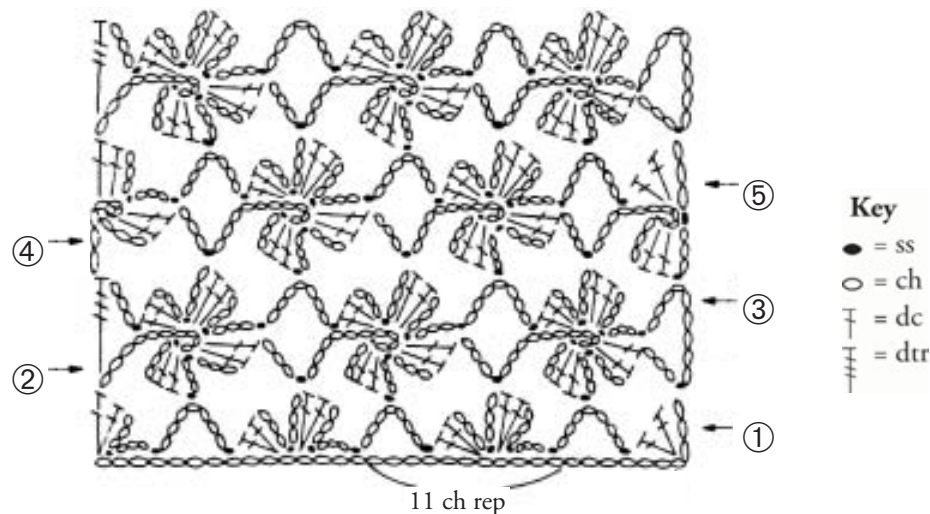
**5th row:** Ch 3. 2 dc in loop. \*Ss in 3rd ch from loop. Ch 7. Ss in top of dc. Ch 3. (Ss. Ch 3. 2 dc. Ch 3. Ss. Ch 3. 2 dc) all in loop. Rep from \* across ending with ss in 4th ch from loop. Ch 7. Ss in side of dc. Ch 3. (Ss. Ch 3. 2 dc) all in loop. **Do not turn.**

Rep 2nd to 5th rows to form pat.

Cont in pat until work from beg measures approx 70 ins [178 cm], ending on a 4th row of pat. Fasten off.

**Edging: 1st rnd:** With RS of work facing and smaller hook, join yarn with ss to any corner of Shawl. Work 1 row of sc evenly around outer edges, working 3 sc in corners. Join with ss to first sc.

**2nd rnd:** 1 sc in each of first 3 sc. \* Ch 3. Ss in last sc – picot made. 1 sc in each of next 3 sc. Rep from \* around. Join with ss to first sc. Fasten off.



Patons

... a part of your life.

P.O. Box 40 Listowel ON N4W 3H3