



MATERIALS

Anchor Stitchable Felt™ Sheets:

1 red and 1 green

Stranded Cotton Embroidery Floss:

J & P Coats 6225 light green

J & P Coats 1001 white

Large-eye tapestry needle

1 yard (.91m) of 1/8" (6mm) ribbon

Scissors

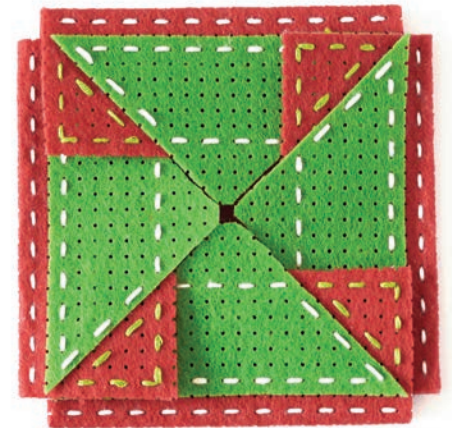
✦ CROSS STITCH | SKILL LEVEL: **EASY**

Featuring Anchor Stitchable Felt™

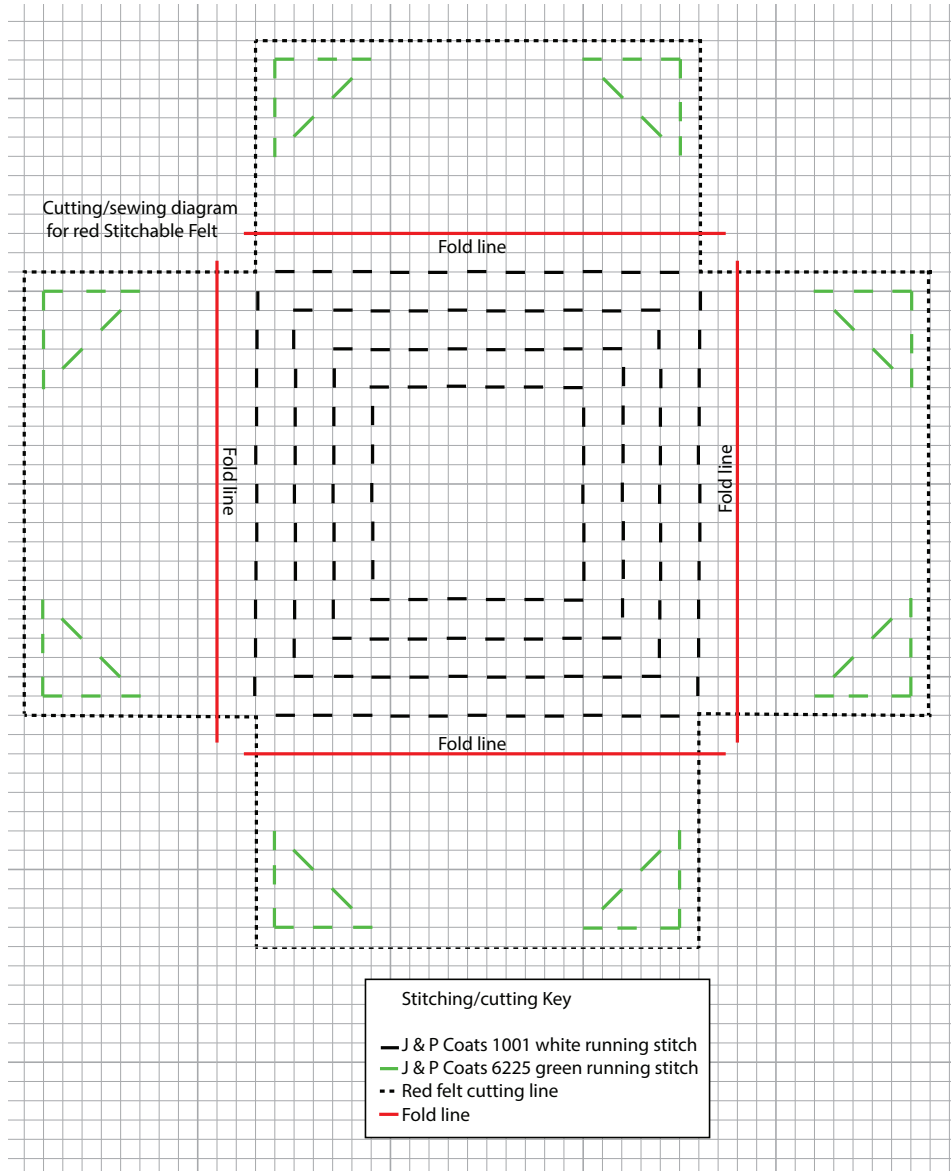
The seven-holes-to-an-inch perforated Anchor Stitchable Felt is great for creative cross-stitch projects. Make this fun gift card holder to celebrate any occasion with your friends and family! This one is in Christmas colors, but choose any color to match your celebration!

INSTRUCTIONS

1. Following the cutting line on the diagram on page 2, cut out the Red Gift Card Holder Shape.
2. Following the cutting line on the diagram on page 2, cut out the Four Green Triangles.
3. On red Stitchable Felt™ Sheet and following cross stitch chart stitch the white stitching using a running stitch (in one hole and out the next).
4. Stitch the green stitching using a running stitch.
5. Fold the felt on the indicated folding line and stitch a running stitch along the folded edge.
6. Stitch the green felt triangles in place following the stitch as indicated on the stitching diagram. Bury the thread ends between the layers for a nice, neat inside.
7. Fold the flaps pinwheel style and tie with a ribbon.



Red Gift Card Holder Shape



Four Green Triangles

