



## MATERIALS

**Coats & Clark® Outdoor Thread:** Red Cherry (2680), Navy 4900

¾ yd (68.58cm) anchor outdoor print fabric

⅓ yd (30.48cm) red outdoor fabric

3 yds (2.74m) ecru braid, ¾" (1.91cm)

18" (45.72cm) square pillow form

Paper-back fusible web

 SEWING | SKILL LEVEL: **EASY**

## Featuring Coats & Clark® Outdoor Thread

This bright anchor appliqué and rope trimmed pillow is perfect for decorating a beach or lake home or as a summer accent on your deck. Sew it with Coats & Clark® Outdoor Thread and enjoy the sunny days ahead.

### PREPARATION

Trace the anchor pattern on page 3 onto the paper side of the fusible web. Rough-cut the shape. Following the manufacturer's instructions, fuse the shape to the wrong side of the red fabric. Cut out on the marked lines.

### CUTTING

#### **From anchor print, cut:**

One square, 18½" (46.99cm)

Two rectangles, 18½" x 12½"  
(46.99cm x 31.75cm)

### ASSEMBLING

#### **Pillow Front**

1. Position the anchor on the pillow front at a slight angle. Fuse in place.
2. Using a medium width and medium length zigzag, appliqué the anchor shape in place. Pull the thread ends to the underside and tie off.

#### **Pillow Back**

1. Press under a double ½" (1.27cm) hem along one long edge of each rectangle. **Note:** If using a directional print, orient the rectangles according to their position on the finished pillow to determine an upper and lower edge for the overlap. Stitch the hems in place.



2. Overlap the hemmed rectangles to make an 18 ½" (46.99) square. Baste the overlap edges together. **Note:** For directional prints, the top portion should overlap the bottom portion.

*Seam allowances are ¼" (.64cm).*

### The Pillow

1. Place the pillow front and back right sides together with the pillow back top overlapping the bottom.
2. Sew all around the square. If your outdoor fabric is prone to raveling, zigzag the outer edges together.
3. Turn the pillow right side out, gently push out the corners.

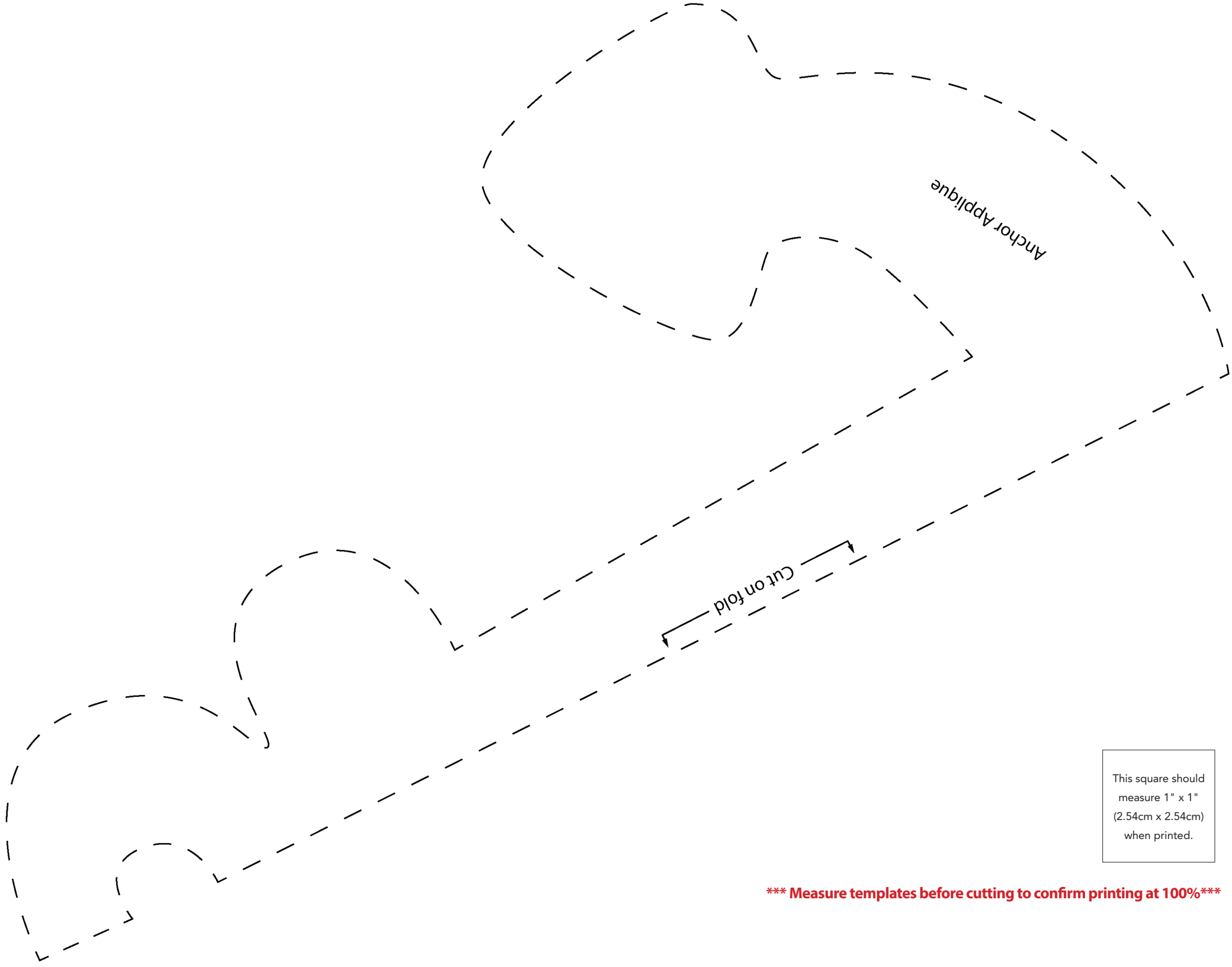
### FINISHING

4. Hand-stitch the braid to the pillow edge, knotting the first braid end at the anchor loop and tying knots at each perimeter corner. Cross the trim over the first portion and knot the second end. Ravel the braid ends as desired. Keep stitching along the pillow edge as you attach the trim.
5. Insert the pillow form through the back opening.

### Here are some tips when using Coats & Clark® Outdoor Thread:

- Use a size 18 or 20 (110 or 120) needle
- Use a longer stitch length, 6-8 stitches per inch, or 4 mm. A thick thread needs more space to form a stitch
- Increase top tension
- Sew slowly. The thread is thick and less flexible than all-purpose thread. *Stitch quality will be better if you slow down!*





Anchor Applique

Cut on fold

This square should  
measure 1" x 1"  
(2.54cm x 2.54cm)  
when printed.

**\*\*\* Measure templates before cutting to confirm printing at 100%\*\*\***