



MATERIALS

Caron® Simply Soft® (6 oz/170.1 g; 315 yds/288 m)

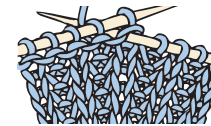
Gold (39782) 1 ball

Set of four sizes U.S. 7 (4.5 mm) and U.S. 8 (5 mm) double-pointed knitting needles.
Size U.S. 7 (4.5 mm) circular knitting needle 16" (40.5 cm) long **or size needed to obtain gauge.** Cable needle. Stitch marker.

ABBREVIATIONS:

Alt = Alternate
Approx = Approximately
Beg = Beginning
C3(5)B = Slip next 1 (2) stitches onto cable needle and leave at back of work. K2 (3), then K1 (2) from cable needle.
C3(5)F = Slip next 2 (3) stitches onto cable needle and leave at front of work. K1 (2), then K2 (3) from cable needle.
C4(6)B = Slip next 2 (3) stitches onto cable needle and leave at back of work. K2 (3), then K2 (3) from cable needle.
C4(6)F = Slip next 2 (3) stitches onto cable needle and leave at front of work. K2 (3), then K2 (3) from

cable needle.
Cont = Continue(ity)
K = Knit
K1below = Knit into next stitch 1 row below, at same time slipping off stitch above



K1tbl = Knit next stitch through back of loop
K2tog = Knit next 2 stitches together
M1 = Make 1 stitch by picking up horizontal loop lying before next stitch and knitting into back of loop.



Pat = Pattern
P = Purl
Pssso = Pass slipped stitch over
Rem = Remain(ing)
Rep = Repeat
Rnd(s) = Round(s)
Sl1 = Slip next stitch knitwise
Ssk = Slip next 2 stitches knitwise one at a time. Pass them back onto left-hand needle, then knit through back loops together
St(s) = Stitch(es)

KNIT | SKILL LEVEL: INTERMEDIATE

SIZE

One size to fit average Woman.

GAUGE

18 sts and 24 rows = 4" [10 cm] in stocking st.

INSTRUCTIONS

With smaller set of double-pointed needles, cast on 88 sts. Divide sts onto 3

needles and join in rnd, placing marker on first st.

1st rnd: *K1tbl. P1. Rep from * around. Rep last rnd Twisted Rib for 2" [5 cm].

Change to larger circular needle.

Next rnd: *K2. M1. K2. Rep from * around. 110 sts.

Next rnd: *K28. M1. K27. M1. Rep from * around. 114 sts.

Proceed in Shaker Cable Pat as follows:
(See Chart I).

1st rnd: *(P1. K1) 3 times. P1. K12. Rep from * around.

2nd and alt rnds: *(P1. K1below) 3 times. P1. K12. Rep from * around.

3rd and 5th rnds: As 1st rnd.

7th rnd: *(P1. K1) 3 times. P1. C6B. C6F. Rep from * around.

8th rnd: *(P1. K1below) 3 times. P1. K12. Rep from * around.

These 8 rnds form Shaker Cable Pat.

Cont in pat until work from beg measures approx 8" [20.5 cm], ending on an 8th row of pat.

Note: Change to larger set of double-pointed needles where appropriate.
(See Chart II).

Shape top: 1st rnd: *(P1. K1) 3 times. P1. ssk. K8. K2tog. Rep from * around. 102 sts.

2nd rnd: *(P1. K1below) 3 times. P1. K10. Rep from * around.

3rd rnd: *P1. Sl1. K2tog. pssso. P1. K1. P1. K10. Rep from * around. 90 sts.

4th rnd: *(P1. K1below) twice. P1. K10. Rep from * around.

5th rnd: *(P1. K1) twice. P1. C5B. C5F. Rep from * around.

6th rnd: *(P1. K1below) twice. P1. ssk. K6. K2tog. Rep from * around. 78 sts.

7th rnd: *(P1. K1) twice. P1. K8. Rep from * around.

8th rnd: *(P1. K1below) twice. P1. K8. Rep from * around.

9th rnd: *P1. Sl1. K2tog. pssso. P1. K8. Rep from * around. 66 sts.

10th rnd: *P1. K1below. P1. C4B. C4F. Rep from * around.

11th rnd: *P1. K1. P1. K8. Rep from * around.

12th rnd: *P1. K1below. P1. ssk. K4. K2tog. Rep from * around. 54 sts.

13th rnd: *P1. K1. P1. K6. Rep from * around.

14th rnd: *P1. K1below. P1. C3B. C3F. Rep from * around.

15th rnd: *Sl 1. K2tog. pssso. ssk. K6. Rep from * around. 42 sts.

16th rnd: *P1. ssk. K2. K2tog. Rep from * around. 30 sts.

17th rnd: *K2tog. Rep from * around. 15 sts.

Break yarn, leaving a long end. Draw end tightly through rem sts and fasten securely.

Key

- = Knit
- ◻ = K1below
- ◻ = Purl
- ◻ = ssk
- ◻ = K2tog

◻ = C3B

◻ = C3F

◻ = C4B

◻ = C4F

◻ = C5B

◻ = C5F

◻ = C6B

◻ = C6F

Chart I

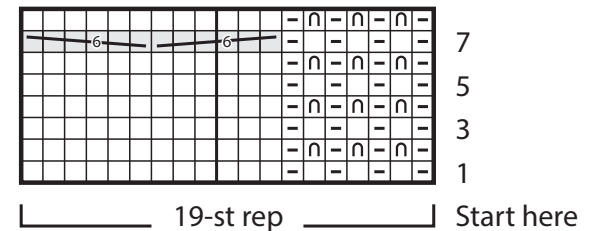


Chart II

