



CROCHET | SKILL LEVEL: EASY

ABBREVIATIONS

Approx =	Dc = Double crochet	Sc = Single crochet
Approximately	Pat = Pattern	Sl st = Slip stitch
Beg = Beginning	Rep = Repeat	Sp(s) = Space(s)
Ch = Chain(s)	Rnd(s) = Round(s)	St(s) = Stitch(es)
Cont = Continue	RS = Right side	

MEASUREMENT

Approx 8" [20.5 cm] square.

GAUGE

13 sc and 14 rows = 4" [10 cm].

INSTRUCTIONS

Note: Carry color not in use along side of work.

Stripe Pat

With A, work 2 rows.

With B, work 2 rows.

These 4 rows form Stripe Pat.

DISHCLOTH

With A, ch 26. See diagram on page 2.

1st row: (RS). 1 sc in 2nd ch from hook. *Skip next 2 ch. 5 dc in next ch. Skip next 2 ch. 1 sc in next ch. Rep from * to end of chain. Turn.

2nd row: Ch 3 (counts as dc). 2 dc in same sc as ch-3. *Skip next 2 dc. 1 sc in next dc. Skip next 2 dc. 5 dc in next sc. Rep from * to last 6 sts. Skip next 2 sc. 1 sc in next dc. Skip next 2 dc. 3 dc in last sc. Break A. Join B. Turn.

3rd row: With B, ch 1. 1 sc in first dc. *Skip next 2 dc. 5 dc in next sc. Skip next 2 dc. 1 sc in next dc. Rep from * to end of row. Turn.

4th row: Ch 3 (counts as dc). 2 dc in same sc as ch-3. *Skip next 2 dc. 1 sc in next dc. Skip next 2 dc. 5 dc in next sc. Rep from * to last 6 sts. Skip next 2 sc. 1 sc in next dc. Skip next 2 dc. 3 dc in last sc. Break B. Join A. Turn.

First 4 rows of Stripe Pat are complete.

MATERIALS

Lily® Sugar'n Cream® (2.5 oz/70.9 g; 120 yds/109 m)

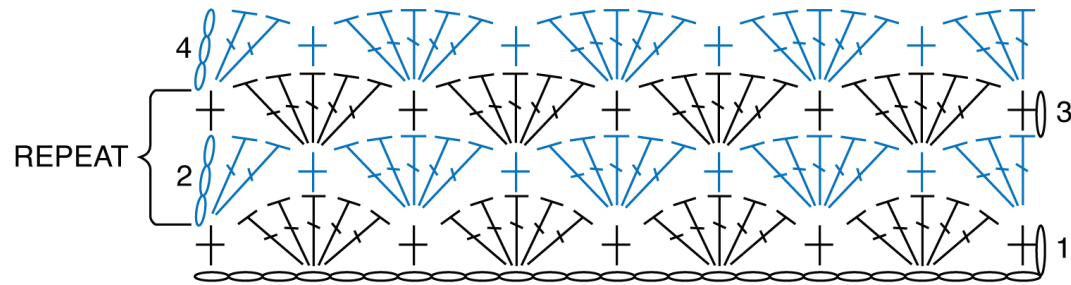
Contrast A Tea Rose (00042) **1 ball or 40.5 yds/37 m**

Contrast B Rose Pink (00046) **1 ball or 24 yds/22 m**

Size U.S. H/8 (5 mm) crochet hook **or size needed to obtain gauge.**

Rep 3rd and 4th rows for Shell Pat and cont in Stripe Pat until work from beg measures approx 7½" [19 cm], ending on a 4th row. Fasten off.

Edging: 1st rnd: (RS). Join A with sl st to any corner. Ch 1. 3 sc in same sp as sl st. (Work sc evenly across side to next corner. 5 sc in next corner) 3 times. Work sc evenly across last side. 2 sc same sp as sl st. Join with sl st to first sc. Fasten off.



STITCH KEY
 ○ = chain (ch)
 + = single crochet (sc)
 T = double crochet (dc)