



INTERMEDIATE

SIZE

One size to fit average man's head.

GAUGE

20 sts and 26 rows = 4" [10 cm] with larger needles in stocking st.

INSTRUCTIONS

Note: When working from chart, carry yarn not in use loosely across WS of work but never over more than 5 sts. When it must pass over more than 5 sts, weave it over and under color in use on next st at center point of sts it passes over. The colors are never twisted around one another.

HAT

With smaller circular needle and MC, cast on 100 sts. Join in rnd, placing marker on first st.

1st to 4th rnds: *K2. P2. Rep from * around.

Change to larger circular needle and proceed as follows:

Next rnd: With MC, (K25. M1) 4 times. 104 sts. Proceed as follows:

1st rnd: Knit 1st row of Chart I, reading row from right to left, noting 13-st rep will be worked 8 times.

Chart I is now in position. (See Charts on page 2)

Cont working Chart I to end of chart. Rep 14 rnds of Chart I once more.

Shape top: Knit Chart II to end of chart, reading rows from right to left and shaping top as follows:

Note: Change to set of four double-pointed needles when necessary.

1st rnd: Knit 1st row of Chart II, reading row from right to left, noting 13-st rep will be worked 8 times.

2nd rnd: *ssk. Pat across 8 sts. K2tog. With MC, K1. Rep from * 7 times more. 88 sts.

3rd and 4th rnds: Knit in pat.

5th rnd: *ssk. Pat across 6 sts. K2tog. With MC, K1. Rep from * 7 times more. 72 sts.

6th and 7th rnds: Knit in pat.

8th rnd: *ssk. Pat across 4 sts. K2tog. With MC, K1. Rep from * 7 times more. 56 sts.

9th and 10th rnds: Knit in pat.

11th rnd: *ssk. Pat across 2 sts. K2tog. With MC, K1. Rep from * 7 times more. 40 sts.

12th and 13th rnds: Knit in pat.

14th rnd: *ssk. K2tog. With MC, K1. Rep from * 7 times more. 24 sts.

15th rnd: Knit in pat. Break yarn, leaving a long end. Draw end through rem sts tightly and fasten securely.

MATERIALS

Patons® Classic Wool Worsted™ (3.5 oz /100 g; 210 yds/192 m)

Main Color (MC) Chestnut Brown (00231) **1 ball**

Contrast A Natural Mix (00229) **1 ball**

Contrast B Moss Heather (77525) **1 ball**

Sizes U.S. 6 (4 mm) and U.S. 7 (4.5 mm) circular knitting needles 16" [40 cm] long. Set of four size U.S. 7 (4.5 mm) double-pointed knitting needles

or size needed to obtain gauge. Stitch marker.

ABBREVIATIONS: www.yarnspirations.com/abbreviations

Cont = Continue(ity)

P = Purl

knit through back loops

K = Knit

Pat = Pattern

together

K2tog = Knit next 2 stitches together

Rem = Remaining

St(s) = Stitch(es)

Rep = Repeat

Tog = Together

M1 = Make 1 stitch by picking up horizontal loop lying before next stitch and knitting into back of loop

Rnd(s) = Round(s)

WS = Wrong side

Ssk = Slip next 2 stitches

knitwise one at a time.

Pass them back onto left-hand needle, then

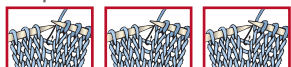




CHART I

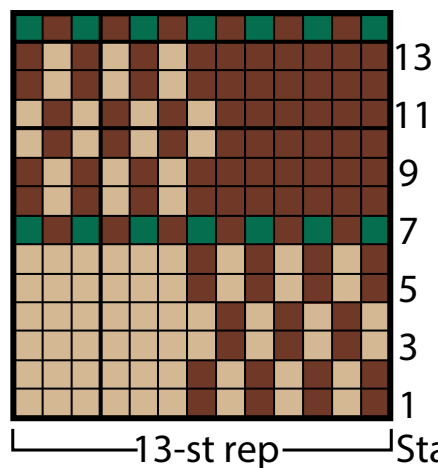
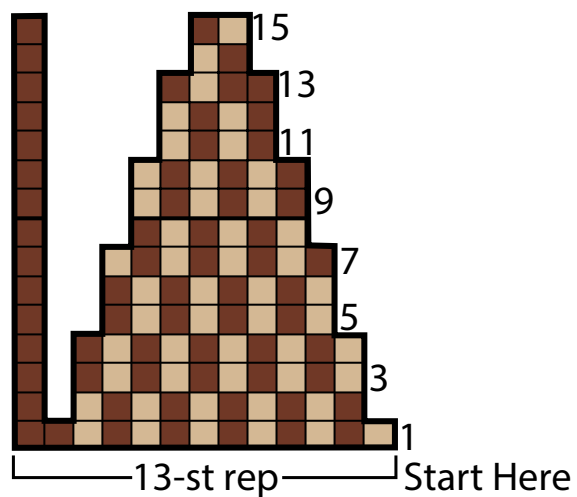


CHART II



KEY

■ = Main Color (MC)

■ = Contrast A

■ = Contrast B