



KNIT
SKILL LEVEL
INTERMEDIATE

Designed by Julie Hines



What you will need:

RED HEART® Soft Baby Steps®:
3 balls 9620 Baby Green

Susan Bates® Circular Knitting
Needles: 5.5mm [US 9] 29" long

Yarn needle, Stitch markers

GAUGE: 17 sts = 4" [10 cm]; 20 rows = 4" [10 cm] in Stockinette Stitch. **CHECK YOUR GAUGE.** Use any size needle to obtain the gauge.



RED HEART® Soft
Baby Steps®,
Art. E746 available in
solid color 5 oz (141 g), 256 yd
(234 m); prints 4 oz (113 g),
204 yd (187 m) balls.

Lace Chevrons Baby Blanket

This beautiful lace design features popular zigzag chevrons, so popular in home decorating. It is worked all in one piece on circular needles, so there is very little finishing...just weave in your ends and present it to a lucky new mom and baby!

Blanket measures: 36" wide x 36" long
[91 cm x 91 cm]

SPECIAL ABBREVIATIONS

K2tog = Knit 2 sts together as one.

SSK = Slip next 2 stitches, one at a time as if to knit, to right needle, insert point of left needle through front of sts, knit these sts together through back loop – decrease made.

STITCH PATTERNS

Seed Stitch

Row 1: *K1, p1, k1; repeat from * to end of row.

Row 2: Knit the purl sts and purl the knit sts, as they appear.

Repeat last row for Seed St. Pattern.

Ivy Lace Pattern (multiple of 11 sts)

Row 1 and every following alternate row

(Wrong Side): Purl. **Row 2:** *K2tog, k4, [yo, k1] 2 times, ssk, k1* **Row 4:** *K2tog, k3, yo, k1, yo, k2, ssk, k1* **Row 6:** *K2tog, k2, yo, k1, yo, k3, ssk, k1* **Row 8:** *K2tog, [k1, yo], 2 times, k4, ssk, k1* **Row 10:** *K2tog, yo, k1, yo, k5, ssk, k1* **Row 12:** Repeat Row 8. **Row 14:** Repeat Row 6. **Row 16:** Repeat Row 4. **Row 18:** Repeat Row 2. **Row 20:** *K2tog, k5, yo, k1, yo, ssk, k1*

NOTES

1. Blanket is worked back and forth in rows on circular needles, do not join.
2. Borders and main body of blanket are worked at same time in one piece.

TIPS & HINTS

Join a new ball of yarn when there are approximately 6" [15 cm] of yarn left from the old ball, also leaving a 6" [15 cm] tail of yarn with the joined yarn. Weave these ends in neatly on the wrong side of the fabric in a zig-zag pattern for a few inches, and then trim off excess.

BLANKET

Cast on 156 sts.

Rows 1-8: Work in Seed Stitch pattern for bottom border.

Row 9 (Wrong Side): Work 6 sts in Seed Stitch pattern for border, K1, work in Ivy Lace Pattern to last 6 sts (13 repeats), work 6 sts in Seed Stitch pattern for opposite border.

Note: Place stitch markers between side borders and center panel of Ivy Lace Pattern to mark where borders begin and end. Also place stitch markers every repeat of Ivy Lace Pattern to keep track of pattern repeats.

Next Rows: Repeat Ivy Lace Pattern rows 1-20 — 9 times.

Next Rows: Work 8 rows in Seed Stitch pattern for bottom border. Bind off all sts in Seed Stitch pattern.

FINISHING

Weave in ends. Block lightly to measurements.

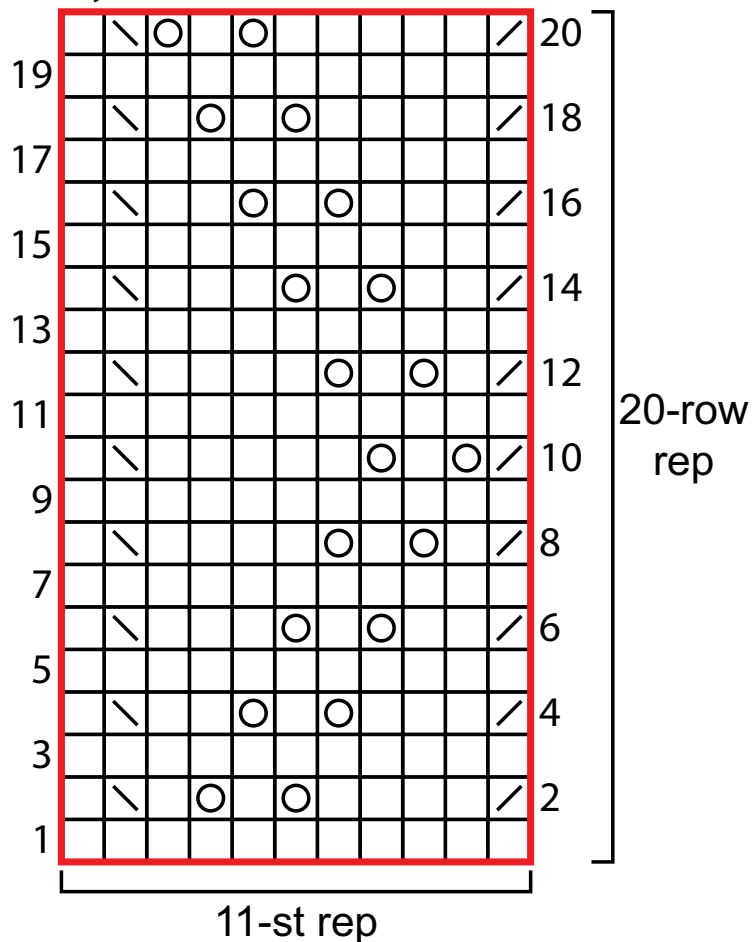
ABBREVIATIONS

K = knit; **K2tog** = knit 2 sts. together; **mm** = millimeters; **P** = purl; **RS** = right side; **st (s)** = stitch(es); **yo** = yarn over; ***** = repeat whatever follows the * as indicated; **WS** = wrong side.

See Chart on next page...

SHOP KIT

Ivy Lace Pattern



Key

- knit on RS, purl on WS
- yarn over
- k2tog (knit 2 stitches together)
- ssk (slip, slip, knit)

