

Version 1



Version 2



MATERIALS

Sizes **6** **12** **18** **mos**

Bernat® Softee Baby™ (5 oz/140 g; 362 yds/331 m)

Version 1

Prettiest Pink (30205) **2** **2** **2** **balls**
375/342 **410/373** **460/418** **yds/m**

Bernat® Softee Baby Cotton™ (4.2 oz/120 g; 254 yds/232 m)

Version 2

Feather Gray (52003) **2** **2** **2** **balls**
390/355 **420/382** **480/437** **yds/m**

Size U.S. 6 (4 mm) Susan Bates® circular knitting needle 29" [74 cm] long **or size needed to obtain gauge.** Susan Bates® stitch marker. 2 Susan Bates® stitch holders. ½" [1 cm] button.



KNIT | SKILL LEVEL: **INTERMEDIATE**

ABBREVIATIONS

Alt = Alternate

Approx = Approximately

Beg = Begin(ning)

Cont = Continue(ity)

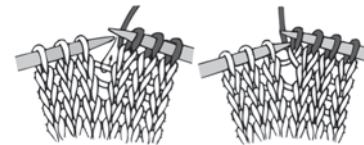
Dec = Decrease(d)

Inc = Increase(d)

K = Knit

K2tog = Knit next 2 stitches together

M1 = Make 1 stitch by picking up horizontal loop lying before next stitch and knitting into back of loop



P = Purl

Pat = Pattern

PM = Place marker

Psso = Pass slipped stitch over

Rem = Remain(ing)

Rep = Repeat

RS = Right side

Sl1 = Slip next stitch knitwise

SM = Slip marker

Ssk = Slip next 2 stitches knitwise one at a time. Pass them back onto left-hand needle, then knit through back loops together.

St(s) = Stitch(es)

WS = Wrong side

Yo = Yarn over

SIZES

To fit chest measurement

6 mos **17"** [43 cm]

12 mos **18"** [45.5 cm]

18 mos **19"** [48 cm]

Finished chest

6 mos **21"** [53.5 cm]

12 mos **22"** [56 cm]

18 mos **23"** [58.5 cm]

GAUGE

22 sts and 30 rows = 4" [10 cm] in stocking st.

INSTRUCTIONS

The instructions are written for **6 mos**. If changes are necessary for larger sizes the instructions will be written **6 mos (12 mos - 18 mos)**. Numbers for each size are shown in the same color throughout the pattern. When only one number is given in black, it applies to all sizes.

Note: Dress is worked in one piece from neck edge down.

DRESS

Beg at neck edge, cast on **51 (57-57)** sts. **Do not** join. Working back and forth across needle in rows to establish back neck opening, proceed as follows:

1st row: (RS). *K1. P1. Rep from * to last st. K1.

2nd row: Rep last row for Seed St Pat once more.

3rd row (buttonhole row): Pat across 2 sts. Cast off 2 sts. Pat to end of row.

4th row: Work in pat, casting on 2 sts over cast off sts.

Proceed in Lace Pat as follows (See Chart I on page 3):

1st row: (RS). (K1. P1) twice. (P1. K2. yo. K1. yo. K2) **7 (8-8)** times. P1. (P1. K1) twice. **65 (73-73)** sts.

2nd and alt rows: (K1. P1) twice. Knit all knit sts and purl all purl sts as they appear to last 4 sts. (P1. K1) twice.

3rd row: (K1. P1) twice. (P1. K3. yo. K1. yo. K3) **7 (8-8)** times. P1. (P1. K1) twice. **79 (89-89)** sts.

5th row: (K1. P1) twice. (P1. K4. yo. K1. yo. K4) **7 (8-8)** times. P1. (P1. K1) twice. **93 (105-105)** sts.

7th row: (K1. P1) twice. (P1. K5. yo. K1. yo. K5) **7 (8-8)** times. P1. (P1. K1) twice. **107 (121-121)** sts.

9th row: (K1. P1) twice. (P1. yo. ssk. K4. yo. K1. yo. K4. K2tog. yo) **7 (8-8)** times. P1. (P1. K1) twice. **121 (137-137)** sts.

11th row: (K1. P1) twice. (P2. yo. ssk. K4. yo. K1. yo. K4. K2tog. yo. P1) **7 (8-8)** times. P1. (P1. K1) twice. **135 (153-153)** sts.

12th row: (WS). Cast off 4 sts. Knit all knit sts and purl all purl sts as they appear to last 4 sts. (P1. K1) twice. **131 (149-149)** sts.

Join sts in rnd, placing marker on first st.

Rem rnds are worked with RS facing.

13th rnd: (K1. P1) twice. (K1. P2. yo. ssk. K9. K2tog. yo. P2) **7 (8-8)** times. P1.

14th and alt rnds: (P1. K1) twice. Knit all knit sts and purl all purl sts as they appear to end of rnd.

15th rnd: (K1. P1) twice. (K2. P2. yo. ssk. K7. K2tog. yo. P2. K1) **7 (8-8)** times. P1.

17th rnd: (K1. P1) twice. (K3. P2. yo. ssk. K5. K2tog. yo. P2. K2) **7 (8-8)** times. P1.

19th rnd: (K1. P1) twice. (K4. P2. yo. ssk. K3. K2tog. yo. P2. K3) **7 (8-8)** times. P1.

21st rnd: (K1. P1) twice. (K5. P2. yo. ssk. K1. K2tog. yo. P2. K4) **7 (8-8)** times. P1.

23rd rnd: (K1. P1) twice. (K6. yo. P2. yo. Sl1. K2tog. pssso. yo. P2. yo. K5) **7 (8-8)** times. P1. **145 (165-165)** sts.

25th rnd: (K1. P1) twice. (K8. P5. K7) **7 (8-8)** times. P1.

27th rnd: (K1. P1) twice. (K9. yo. P3. yo. K8) **7 (8-8)** times. P1. **159 (181-181)** sts.

29th rnd: (K1. P1) twice. (K11. P1. K10) **7 (8-8)** times. P1.

30th rnd: (K1. P1) twice. Knit to end of rnd.

Sizes 12 mos and 18 mos sizes only: Next rnd: (P1. K1) twice. Knit all knit sts and purl all purl sts as they appear to end of rnd.

Next rnd: (K1. P1) twice. Knit to end of rnd. Rep last 2 rnds **1 (3)** time(s) more.

All sizes: Divide for sleeves:

Skip first **25 (30-30)** sts. Slip next **33 (35-35)** sts onto st holder for Left Sleeve. Skip next **47 (55-55)** sts. Slip next **33 (35-35)** sts onto st holder for Right Sleeve. Leave rem **21 (26-26)** sts on circular needle and proceed as follows across rem **93 (111-111)** sts for Skirt. Place marker at end of rnd.

Size 6 mos size only: Next rnd: (K1. P1) twice. *K8. M1. Rep from * to last st. K1. 104 sts.

Sizes 12 mos and 18 mos sizes only: Next rnd: (K1. P1) twice. Knit to last st. Inc 1 st in last st. 112 sts.

All sizes: Skirt Waistband:

1st rnd: *P1. K1. Rep from * around.

2nd rnd: *K1. P1. Rep from * around.

3rd to 6th rnds: Rep 1st and 2nd rnds twice more.

Beg shaping: 1st rnd: K4. M1. *P1. M1. K7. M1. Rep from * to last 4 sts. P1. M1. K3. **130 (140-140)** sts.

2nd to 12th rnds: K5. *P1. K9. Rep from * to last 5 sts. P1. K4.

13th rnd: K5. M1. *P1. M1. K9. M1. Rep from * to last 5 sts. P1. M1. K4. **156 (168-168)** sts.

14th to 24th rnds: K6. *P1. K11. Rep from * to last 6 sts. P1. K5.

25th rnd: K6. M1. *P1. M1. K11. M1. Rep from * to last 6 sts. P1. M1. K5. **182 (196-196)** sts.

26th to 36th rnds: K7. *P1. K13. Rep from * to last 7 sts. P1. K6.

37th rnd: K7. M1. *P1. M1. K13. M1. Rep from * to last 7 sts. P1. M1. K6. **208 (224-224)** sts.

38th rnd: K8. *P1. K15. Rep from * to last 8 sts. P1. K7.

Rep last rnd until work from waistband measures **7 (7½-8½)" [18 (19-21.5) cm]**.

Next rnd: K8. Move marker on next st to indicate beg of rnd and proceed as follows:

Edging (See Chart II): 1st rnd: *P1. K5. K2tog. yo. K1. yo. ssk. K5. Rep from * around.

2nd and alt rnds: *P1. K15. Rep from * around.

3rd rnd: *P1. K4. K2tog. yo. K3. yo. ssk. K4. Rep from * around.

5th rnd: *P1. K3. (K2tog. yo) twice. K1. (yo. ssk) twice. K3. Rep from * around.

7th rnd: *P1. K2. (K2tog. yo) twice. K3. (yo. ssk) twice. K2. Rep from * around.

9th rnd: *P1. K1. (K2tog. yo) 3 times. K1. (yo. ssk) 3 times. K1. Rep from * around.

11th rnd: As 7th rnd.

13th rnd: *P1. K3. K2tog. yo. K5. yo. ssk. K3. Rep from * around.

15th rnd: *P1. K2. K2tog. yo. K1. yo. ssk. K1. K2tog. yo. K1. yo. ssk. K2. Rep from * around.

17th rnd: *P1. K1. K2tog. yo. K3. yo. Sl1. K2tog. pssso. yo. K3. yo. ssk. K1.

18th rnd: As 2nd rnd.

19th rnd: *K1. P1. Rep from * around.

20th rnd: *P1. K1. Rep from * around.

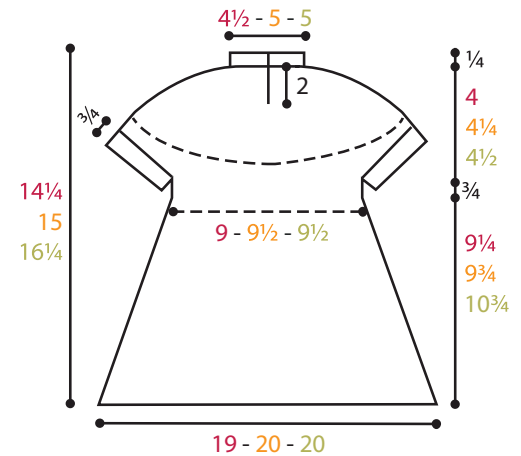
21st to 24th rnds: Rep last 2 rnds twice more for Seed St Pat. Cast off in pat.

Sleeve Edging: With RS facing, **K33 (35-35)** from Sleeve st holder.

Do not join. Working back and forth across needle in rows, proceed as follows:

1st row: (WS). *K1. P1. Rep from * to last st. K1.

Rep last row for Seed St Pat 4 times more. Cast off in pat. Sew sleeve edging seam. Sew cast off sts from 12th row of Yoke in position on WS. Sew button in position to correspond to buttonhole.



Key

- = Knit on RS rows. □ = K2tog
- = Purl on WS rows. □ = ssk
- = Purl on RS rows. □ = yo
- = Knit on WS rows. □ = Sl1. K2tog. pssso

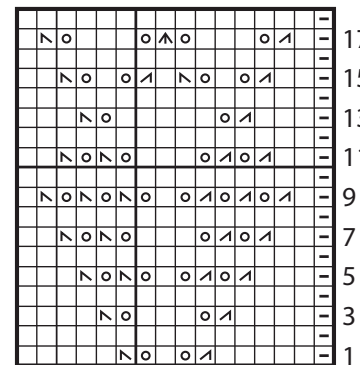


Chart II

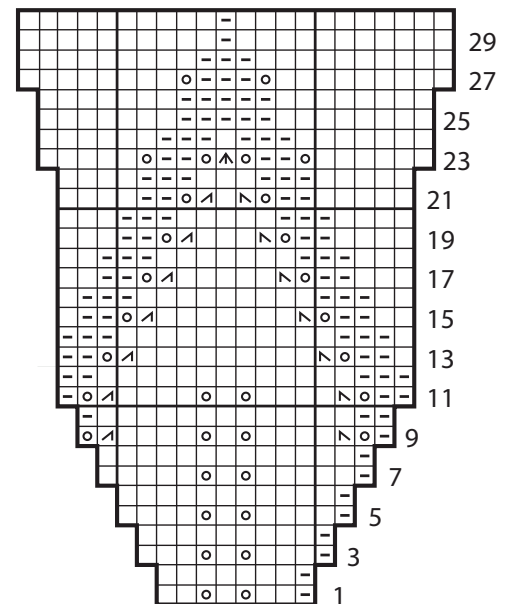


Chart I