



MATERIALS

Patons® Astra™ (1.75 oz/50 g; 133 yds/122 m)

Main color (MC) (Blue) **9 balls**

Contrast A (White) **1 ball**

Size U.S. 7 (4.5 cm) knitting needles and U.S. 7 (4.5 cm) circular knitting needle 36" [90 cm] long **or size needed to obtain gauge.**



KNIT | SKILL LEVEL: EASY

ABBREVIATIONS

Alt = Alternate(ing)

Approx = Approximately

Cont = Continue(ity)

Beg = Beginning

K = Knit

Pat = Pattern

Rep = Repeat

RS = Right side

St(s) = Stitch(es)

Tog = Together

WS = Wrong side

Yo = Yarn over

MEASUREMENTS

Approx 37" x 43" [94 x 109 cm].

GAUGE

21 sts and 32 rows = 4" [10 cm] in pat.

INSTRUCTIONS

With MC, cast on 176 sts. Do not join. Working back and forth across needle, proceed as follows: Work Chart 1 to end of chart *reading RS rows from right to left and WS rows from left to right*, noting the 20 st rep will be worked 8 times.

Rows 1 to 20 of Chart form pat.

Cont in pat until Blanket from beg measures approx 39" [99 cm], ending on a 10th row of chart pat. Cast off.

Note: When working Edging, use separate balls of yarn for each area of color. Start new colors at appropriate points. To change colors, twist the two colors around each other where they meet, on wrong side, to avoid a hole.

Edging: With MC, cast on 2 sts. With A, cast on 2 sts.

1st row: RS. With A, K2. With MC, yo. K2. 5 sts.

2nd and alt rows: Knit, changing colors at appropriate point.

3rd row: With A, K2. With MC, yo. K3. 6 sts.

5th row: With A, K2. With MC, yo. K4. 7 sts.

7th row: With A, K2. With MC, yo. K5. 8 sts.

9th row: With A, K2. With MC, yo. K6. 9 sts.

11th row: With A, K2. With MC, yo. K7. 10 sts.

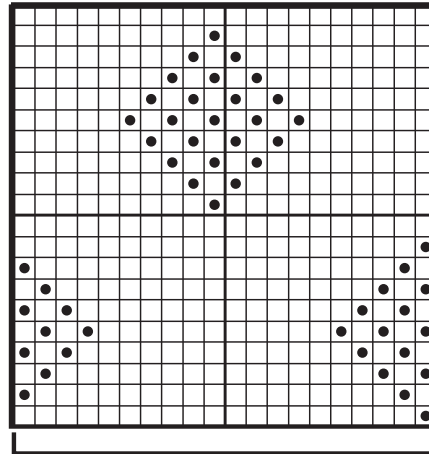
13th row: With A, K2. With MC, yo. K8. 11 sts.

15th row: With A, K2. yo. K9. 12 sts.

16th row: With A, cast off 9 sts purlways. Knit to end of row. 3 sts.

17th row: With A, K2. With MC, yo. K1. 4 sts.

18th row: With MC, K2. With A, K2. Rep last 18 rows until edging fits around entire Blanket allowing sufficient length to gather at each corner, beg at centre of one side edge, sewing in place as you work. Cast off. Sew ends of edging tog.



20-st rep

Key

- = Knit on RS rows. Purl on WS rows.
- = Purl on RS rows. Knit on WS rows.