



## MATERIALS

**Red Heart® Hygge™** (5 oz/141 g; 132 yds/121 m)

Almond (8334)

**15 balls or 1887 yds/1726 m**

Size U.S. 10½ (6.5 mm) circular knitting needle 36" [91.5 cm] long or size needed to obtain gauge.



KNIT | SKILL LEVEL: EASY

## ABBREVIATIONS

**Approx** = Approximately

**Beg** = Beginning

**K** = Knit

**P** = Purl

**Pat** = Pattern

**Rep** = Repeat

**RS** = Right side

**Sl3Pwyib** = Slip next 3 stitches purl-wise with yarn in back of work

**Sl3Pwyif** = Slip next 3 stitches purl-wise with yarn in front of work

**St(s)** = Stitch(es)

**Tog** = Together

## MEASUREMENT

Approx 46" x 60" [117 x 152.5 cm], excluding fringe.

## GAUGE

17 sts and 18 rows = 4" [10 cm] in pat.

## INSTRUCTIONS

### Note:

- Pat worked over multiple of 6 sts + 1.

Cast on 199 sts. **Do not** join. Working back and forth across needle in rows, proceed as follows:

(See Chart on pg 2)

**1st row:** (RS). K1. \*P2. K1. Rep from \* to end of row.

**2nd row:** K1. \*K2. P1. Rep from \* to last 3 sts. K3.

**3rd row:** K1. P1. \*Sl3Pwyif. P1. K1. P1. Rep from \* to last 5 sts. Sl3Pwyif. P1. K1.

**4th row:** K2. Sl3Pwyib. \*K1. P1, K1. Sl3Pwyib. Rep from \* to last 2 sts. K2.

**5th row:** K1. \*P2. K1. Rep from \* to end of row.

**6th row:** K1. \*K2. P1. Rep from \* to last 3 sts. K3.

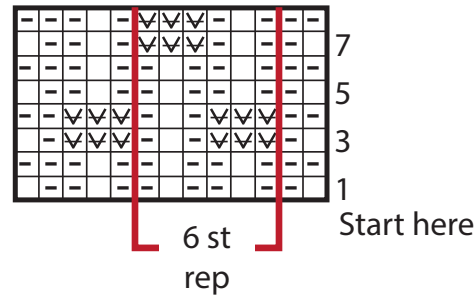
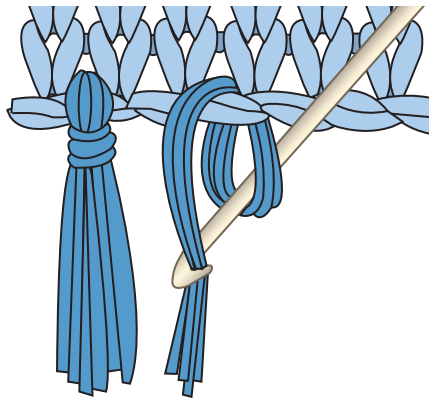
**7th row:** K1. P1. \*P1. K1. P1. Sl3Pwyif. Rep from \* to last 5 sts. P1. K1. P2. K1.

**8th row:** K3. P1. K1. \*Sl3Pwyib. K1. P1. K1. Rep from \* to last 2 sts. K2. Rep last 8 rows until work from beg measures approx 60" [152.5 cm] ending on a 5th row.

Cast off in pat.

## FINISHING

**Fringe:** Cut strands 12" [30.5 cm] long. Taking 3 strands tog, fold in half and knot into fringe through each corner and every 3rd st across top and bottom edges of Blanket (through each knit st along RS). Trim fringe evenly.



Key

- = Knit on RS rows. Purl on WS rows.
- ◻ = Purl on RS rows. Knit on WS rows.
- ∇ = Sl1Pwyif on RS rows. Sl1Pwyib on WS rows.