



 CROCHET | SKILL LEVEL: **EASY**

ABBREVIATIONS

Approx = Approximate(ly)

Beg = Begin(ing)

Ch = Chain(s)

Cont = Continue

Dc = Double crochet

Rem = Remain(ing)

Rep = Repeat

Rnd(s) = Round(s)

Sc = Single crochet

Sc2tog = Draw up a loop in each of next 2 stitches. Yoh and draw through all loops on hook

Sl st = Slip stitch

Sp(s) = Space(s)

St(s) = Stitch(es)

Yoh = Yarn over hook

MEASUREMENTS

Approx 12" [30.5 cm] wide x 13" [33 cm] high (excluding leaves).

GAUGE

10 sc and 11 rows = 4" [10 cm].

INSTRUCTIONS

Beg at base, with A, ch 44. Join with sl st to first ch to form ring, taking care not to twist chain. See charts on page 3.

1st rnd: Ch 1. 1 sc in first ch. *Skip next ch. 3 dc in next ch. Skip next ch. 1 sc in next ch. Rep from * to last 3 ch. Skip next ch. 3 dc in next ch. Skip last ch. Join with sl st to first sc.

2nd rnd: Ch 3 (counts as dc here and throughout). 4 dc in same sp as last sl st. *Sl st in center dc of next 3-dc group. 5 dc in next sc. Rep from * to last 3-dc group. Sl st in center dc of last 3-dc group. Join with sl st to top of ch 3. Sl st in next dc. *Working in back loop only*, join B with sl st in next dc.

3rd rnd: With B, ch 1. Sl st in same sp as last sl st. **Working in back loop only of each st*, 5 dc in next sl st. Sl st in center dc of next 5-dc group. Rep from * around, ending last rep with 5 dc in last sl st. Join A with sl st in first sl st.

MATERIALS

Bernat® Softee® Baby Chunky™ (5 oz/140 g; 155 yds/142 m)

Contrast A Buttercup (96014) **1 ball**

Contrast B Fluffy Cloud White (96001) **1 ball**

Contrast C Sprout Green (96010) **1 ball**

Size U.S. K/10½ (6.5 mm) crochet hook **or size needed to obtain gauge.** Stuffing.

4th rnd: With A, ch 3. 4 dc in same sp as last sl st. **(Yoh) twice and draw up a loop in rem front loop of next sl st 2 rnds below. (Yoh and draw through 2 loops on hook) twice. Insert hook into center dc of next 5-dc group. Yoh and draw through all loops on hook - Tr join made.*** 5 dc in next sl st. Rep from * around, ending at **. Join with sl st in top of ch 3. Sl st in next dc. *Working in back loop only*, join B with sl st in next dc.

5th rnd: With B, ch 1. Sl st in same sp as last sl st. **Working in back loop only of each st*, 5 dc in next Tr join. Sl st in center dc of next 5-dc group. Rep from * around, ending last rep with 5 dc in last st. Join A with sl st in first sl st.

6th rnd: With A, ch 3. 4 dc in same sp as last sl st. **Sl st in center dc of next 5-dc group. 5 dc in next sl st. Rep from * to last 5-dc group. Sl st in center dc of last 5-dc group. Join with sl st to top of ch 3. Sl st in next dc. Working in back loop only*, join B with sl st in next dc.

Rep 3rd to 6th rnds until work from beg measures approx 10" [25.5 cm], ending on a 4th rnd.

Shape top: 1st rnd: With B, ch 1. Sl st in same sp as last sl st. **Working in back loop only of each st*, 3 dc in next Tr join. Sl st in center dc of next 5-dc group. Rep from * around, ending last rep with 3 dc in last st. Join A with sl st in first sl st.

2nd rnd: With A, ch 3. 2 dc in same sp as last sl st. **Sl st in center dc of next 3-dc group. 3 dc in next sl st. Rep from * to last 3-dc group. Sl st in center dc of last 3-dc group. Join with sl st to top of ch 3. Working in back loop only*, join B with sl st in next dc.

3rd rnd: With B, ch 1. Sl st in same sp as last sl st. **Working in back loop only of each st*, 3 dc in next sl st. Sl st in center dc of next 3-dc group. Rep from * around, ending last rep with 3 dc in last sl st. Join A with sl st in first sl st. Break B.

4th rnd: With A, ch 3. 2 dc in same sp as last sl st. **Tr join in rem loop of next sl st 2 rnds below with center dc of next 3-dc*

*group.*** 3 dc in next sl st. Rep from * around, ending at **. Join with sl st in top of ch 3. Sl st in next dc.

5th rnd: Ch 1. Sl st in same sp as last sl st. **1 dc in next Tr join. Sl st in center dc of next 3-dc group. Rep from * around, ending with 1 dc in last Tr join. Join with sl st to first sl st. 22 sts.*

6th rnd: Ch 1. Sc2tog over same sp as last sl st and next st. **Sc2tog. Rep from * around. Join with sl st to first st. 11 sts. Fasten off leaving a long end. Draw end tightly through rem sts and fasten securely.*

Large Leaves (make 3)

***With C, ch 2.*

1st rnd: 4 sc in 2nd ch from hook. Join with sl st to first sc. 4 sc.

2nd and 3rd rnds: Ch 1. 1 sc in each sc around. Join with sl st to first sc.

4th rnd: Ch 1. 2 sc in first sc. 1 sc in next sc. 2 sc in next sc. 1 sc in last sc. Join with sl st to first sc. 6 sc.

5th and 6th rnds: Ch 1. 1 sc in each sc around. Join with sl st to first sc.

7th rnd: Ch 1. 2 sc in first sc. 1 sc in each of next 2 sc. 2 sc in next sc. 1 sc in each of last 2 sc. Join with sl st to first sc. 8 sc.

8th and 9th rnds: As 5th rnd.**

10th rnd: Ch 1. 2 sc in first sc. 1 sc in each of next 3 sc. 2 sc in next sc. 1 sc in each of last 3 sc. Join with sl st to first sc. 10 sc.

11th rnd: As 5th rnd.

12th rnd: Ch 1. 2 sc in first sc. 1 sc in each of next 4 sc. 2 sc in next sc. 1 sc in each of last 4 sc. Join with sl st to first sc. 12 sc.

13th rnd: As 5th rnd.

14th rnd: Ch 1. 2 sc in first sc. 1 sc in each of next 5 sc. 2 sc in next sc. 1 sc in each of last 5 sc. Join with sl st to first sc. 14 sc. Fasten off leaving a long end for sewing.

Small Leaves (make 4)


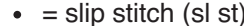



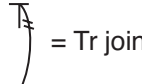


Work from ** to ** as given for Large Leaves. Fasten off leaving a long end for sewing.

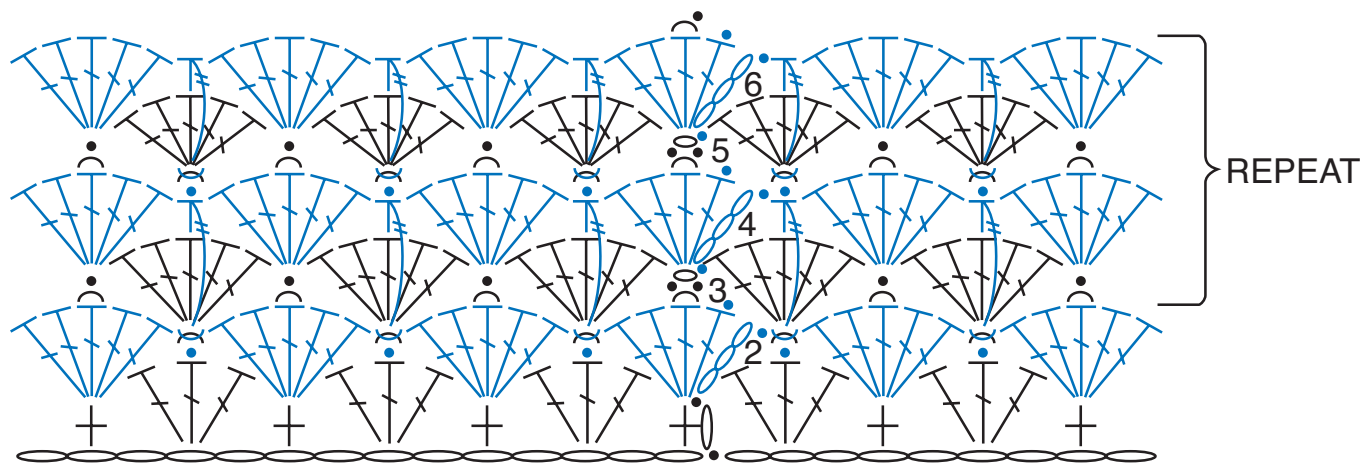
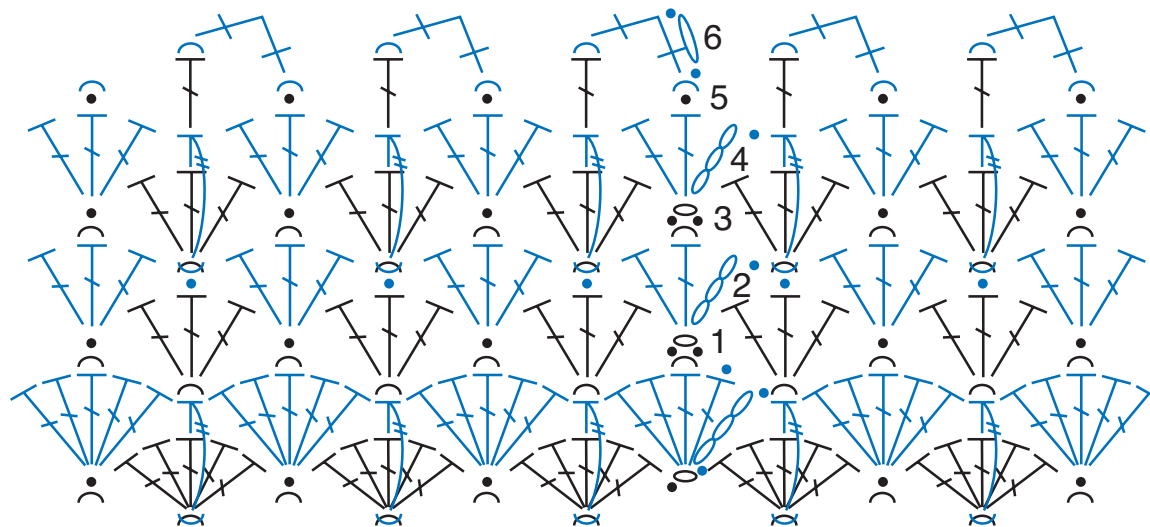
FINISHING

Stuff Pillow. Sew base closed. Sew Leaves to top as shown in photo.

BERNAT® JUICY PINEAPPLE CROCHET PILLOW | CROCHET

STITCH KEY

-  = chain (ch)
-  = slip stitch (sl st)
-  = single crochet (sc)
-  = double crochet (dc)
-  = single crochet 2 together (sc2tog)
-  = Tr join
-  = work in back loop
-  = work in front loop



REDUCED SAMPLE OF PILLOW PATTERN

