

Patons
Canadiana

Patons
DECOR



CHRISTMAS EVE AFGHAN

MEASUREMENTS

Approx 42 x 48 ins [106.5 x 122 cm]

MATERIALS

Patons Decor (100 g/3.5 oz) or
Patons Canadiana (100 g/3.5 oz)

Main color MC (navy) **14 balls**
Contrast A (aran) **2 balls**
Contrast B (taupe) **1 ball**

Small quantity of **Contrast C** (orange)
for embroidery.

Size 4.5 mm (U.S. 7) knitting needles
or size needed to obtain tension. Size
4.5 mm (U.S. 7) circular needle 36 ins
[90 cm] long. Cable needle.

TENSION

20 sts and 26 rows = 4 ins [10 cm] in
stocking st.

Each Motif (before edging) = approx
6 ins [15 cm] square.

ABBREVIATIONS

C4B = slip next 2 sts onto a cable
needle and leave at back of work. K2,
then K2 from cable needle.

C4F = slip next 2 sts onto a cable
needle and leave at front of work. K2,
then K2 from cable needle.

INSTRUCTIONS

MOTIF A (make 12).

Note: When working from chart, wind
small balls of the colors to be used, one
for each separate area of color in the
design. Start new colors at appropriate
points. To change colors, twist the two
colors around each other where they
meet, on WS, to avoid a hole.

With MC, cast on 31 sts. Knit 3 rows
(garter st) noting that first row is **WS**.

Work Chart I in stocking st to end of
chart reading **knit** rows from **right** to
left and **purl** rows from **left** to right.

With MC, knit 2 rows.

Cast off knitways (WS).

Work embroidery on Snowman as
illustrated.

MOTIF B (make 12)

Note: When working from chart, carry
yarn not in use loosely across WS of
work but never over more than 5 sts.
When it must pass over more than 5 sts,
weave it over and under color in use on
next st or at centre point of sts it passes
over. The colors are never twisted
around one another.

With MC cast on 31 sts. Work 3 rows
garter st noting that first row is WS and
inc 4 sts evenly across last row. 35 sts.

Work Chart II in stocking st to end of
chart reading **knit** rows from **right** to
left and **purl** rows from **left** to right.

Next row: With MC, knit, dec 4 sts
evenly across. 31 sts.

Next row: Knit.

Cast off knitways (WS).

MOTIF C (make 24)

With MC cast on 31 sts.

Knit 3 rows, noting that first row is **WS**
and inc 13 sts evenly across last row. 44 sts.

1st row: (RS). P4. K4. P2. K8. P2.
K4. P2. K8. P2. K4. P4.

2nd and alt rows: Knit all knit sts
and purl all purl sts as they appear.

3rd row: P4. (C4B. P2. C4F. C4B. P2)
twice. C4B. P4.

5th row: As 1st row.

7th row: P4. (C4B. P2. C4B. C4F. P2)
twice. C4B. P4.

9th row: As 1st row.

11th row: As 7th row.

13th row: As 1st row.

15th row: As 3rd row.

16th row: As 2nd row.

These 16 rows form pat.

Work a further 21 rows pat, ending
with **WS** facing for next row.



ABBREVIATIONS: www.patonsyarns.com/glossary

Next row: Knit, dec 13 sts evenly across. 31 sts.

Next row: Knit.
Cast off knitways (WS).

Motif Edging: With RS of work facing and MC, pick up and knit 35 sts along side of Motif.

Next row: (Wrong side). Knit.

Next row: Knit.
Cast off knitways (wrong side).

FINISHING

Block squares to measurement. Join Motifs as illustrated in Diagram 1.

Side edging: With RS of work facing, circular needle and MC, pick up and knit 240 sts along side edge. **Do not join.** Working back and forth across needle, work 6 rows in garter st, inc 1 st at each end of row. 252 sts. Cast off knitways (WS).

Rep along opposite side edge.

Top and Bottom Edging: With RS of work facing, circular needle and MC, pick up and knit 174 sts along top edge.

Do not join. Working back and forth across needle, knit 6 rows, inc 1 st at each end of row. 186 sts. Cast off knitways (WS).

Rep along bottom edge.
Join mitred corners of edgings.

Fringe: Cut 14 inch [35.5 cm] lengths of yarn. Taking 10 strands tog knot into fringe across top and bottom edges as

CHART I

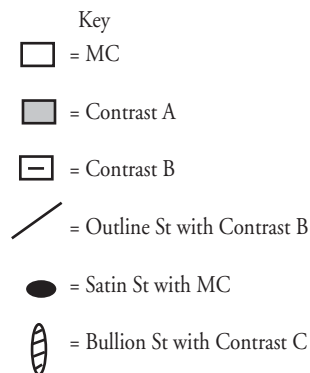
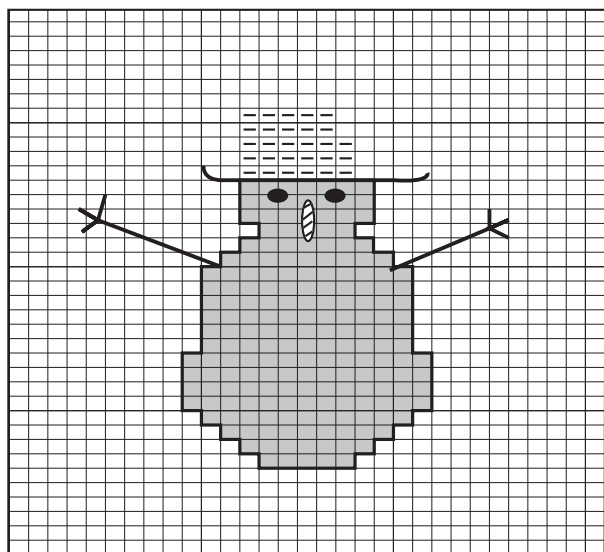


CHART II

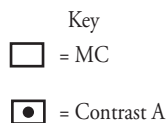
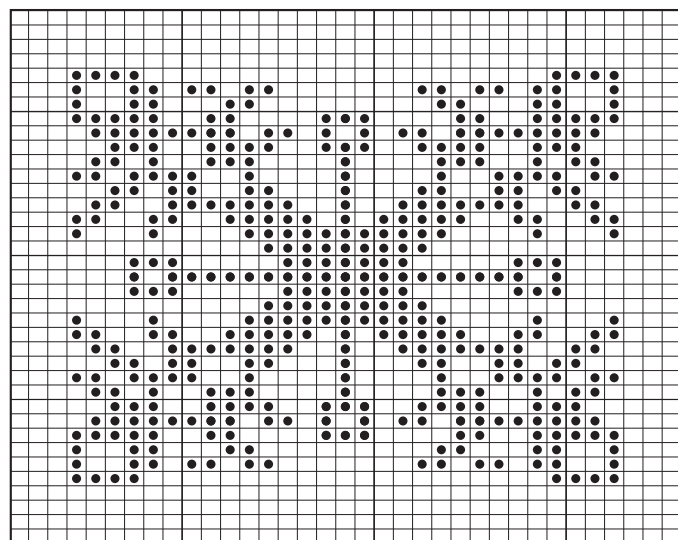
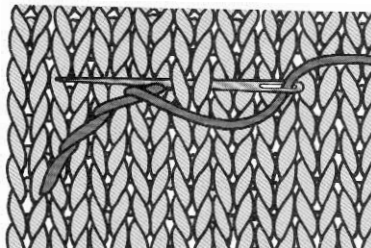


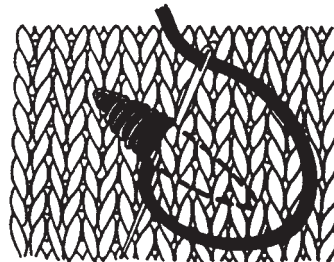
DIAGRAM 1

A	C	B	C	A	C
C	A	C	B	C	A
B	C	A	C	B	C
C	B	C	A	C	B
A	C	B	C	A	C
C	A	C	B	C	A
B	C	A	C	B	C
C	B	C	A	C	B

STEM STITCH



SATIN STITCH



BULLION STITCH



Patons

... a part of your life.

P.O. Box 40, Listowel ON N4W 3H3